

The logo for the San Juan Water Commission (SJWC) is located in the top left corner. It consists of the letters "SJWC" in a bold, blue, sans-serif font, enclosed within a rounded rectangular border. Below the letters, the full name "San Juan Water Commission" is written in a smaller, blue, sans-serif font.

SJWC

San Juan Water Commission

A decorative graphic on the left side of the slide features several overlapping teal circles of various sizes, arranged in a vertical cluster. The background of the slide includes a vertical blue line on the left and a vertical blue line on the right, with a light blue grid pattern in the background.

Water Resource Update

November 4, 2015

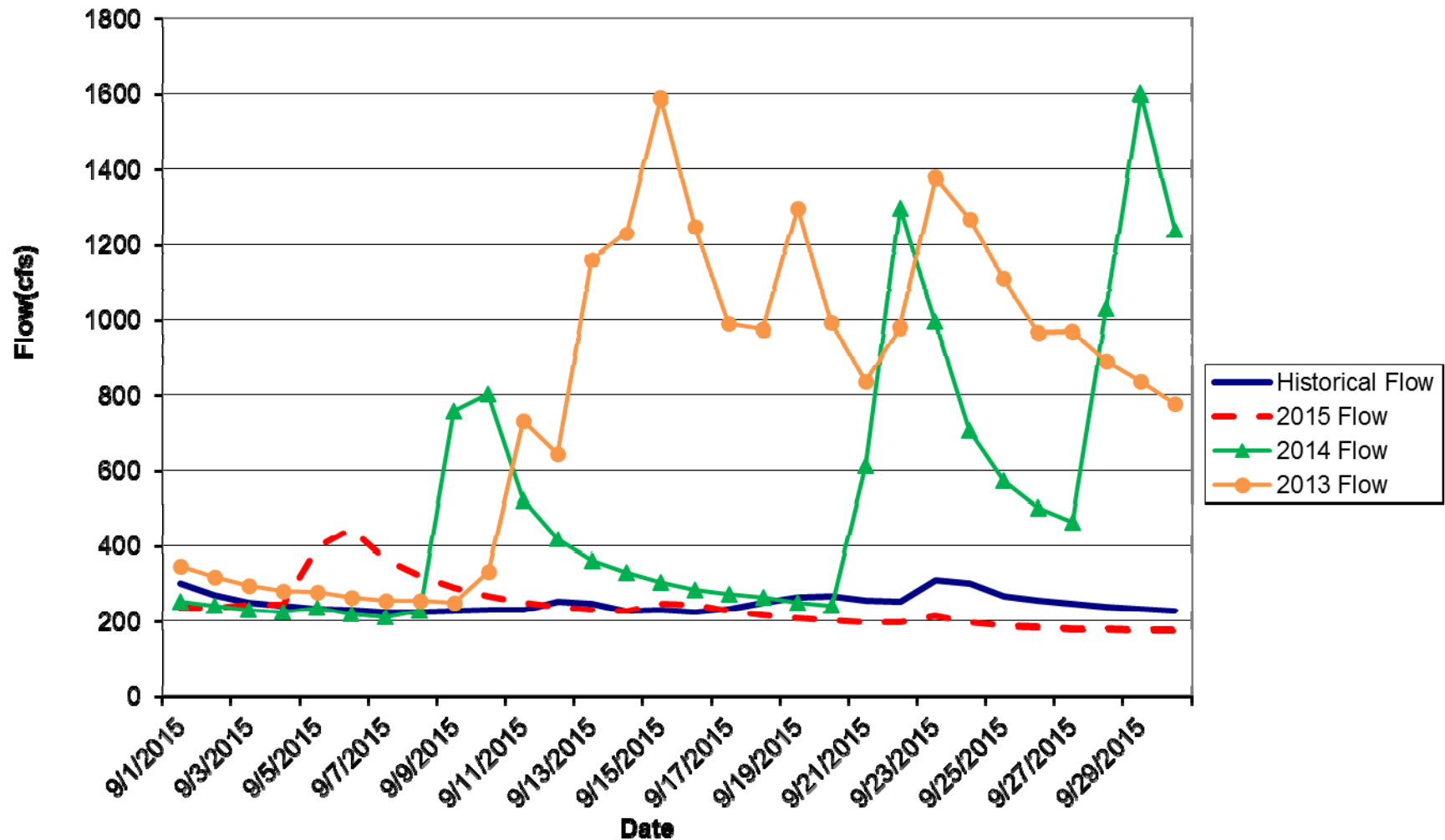


-
- Current Stream Conditions
 - Current Navajo Reservoir Status
 - A-LP Project Update
 - Current Climate Conditions and Outlook



USGS STREAM FLOW DATA

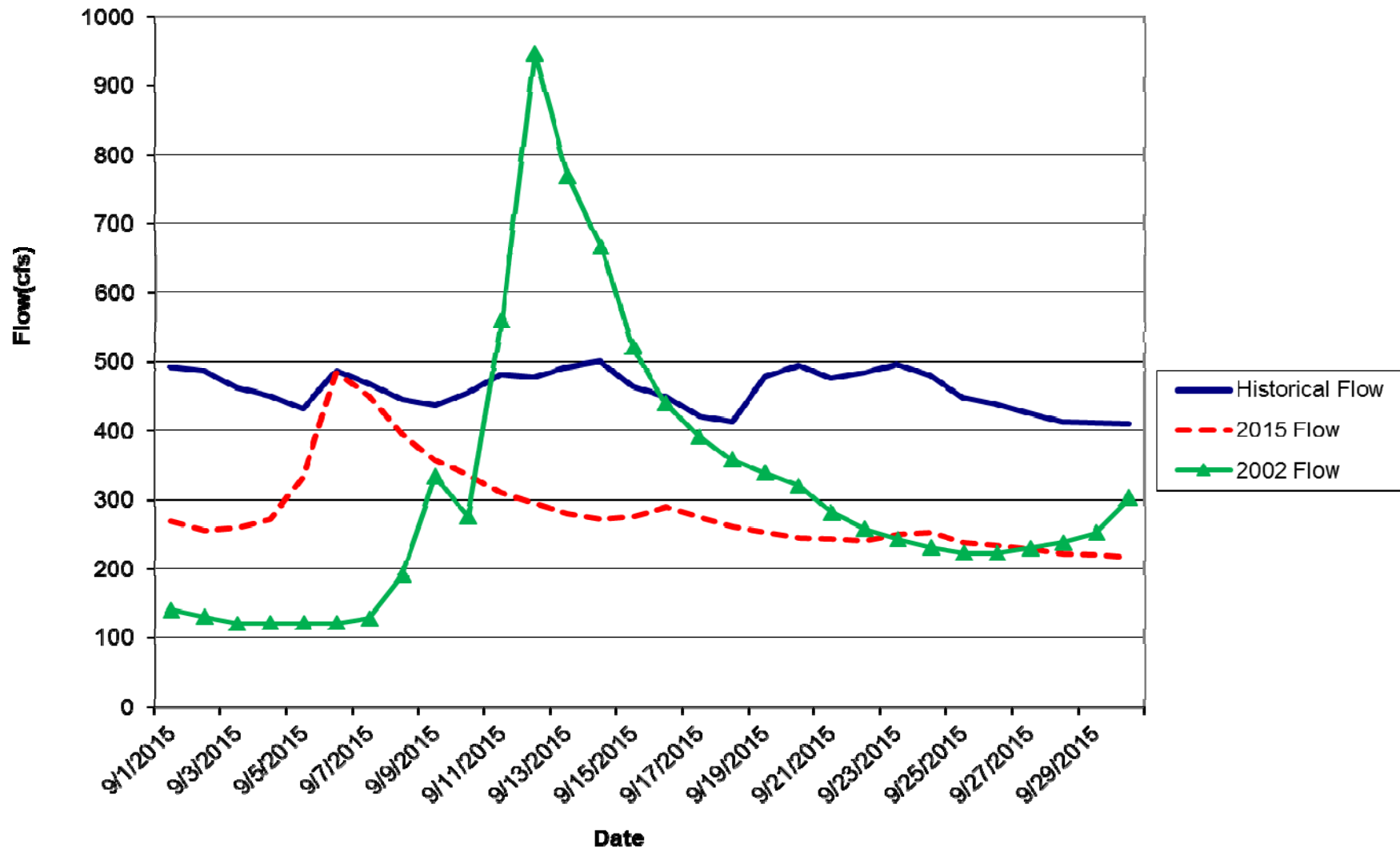
ANIMAS RIVER AT TALL TIMBER "TEFT" (09359500)



Stream Flow Data for the month of September is 97% of average.

USGS STREAM FLOW DATA

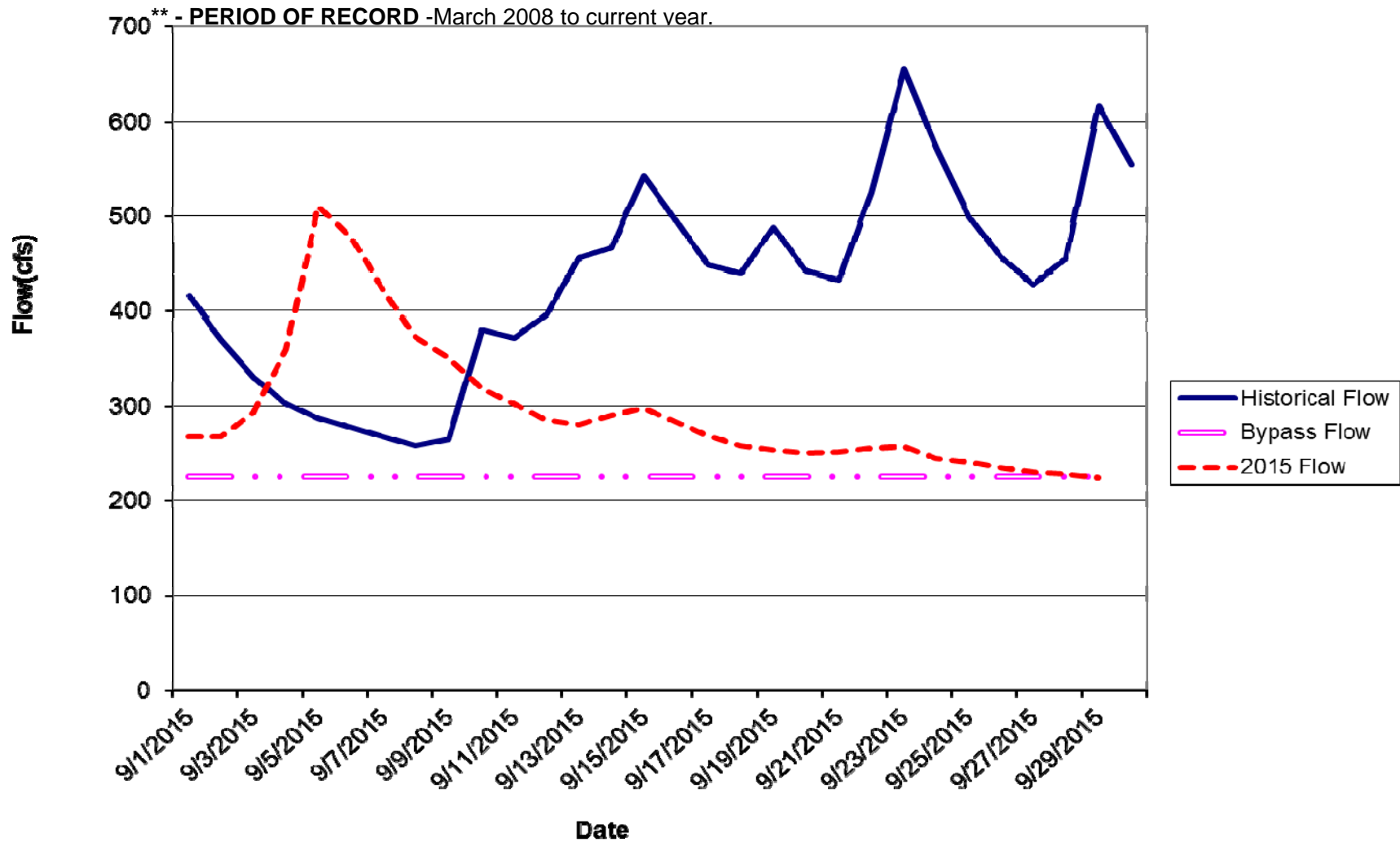
ANIMAS RIVER AT DURANGO (09359500)



Stream Flow Data for the month of September is 62% of average

USGS STREAM FLOW DATA

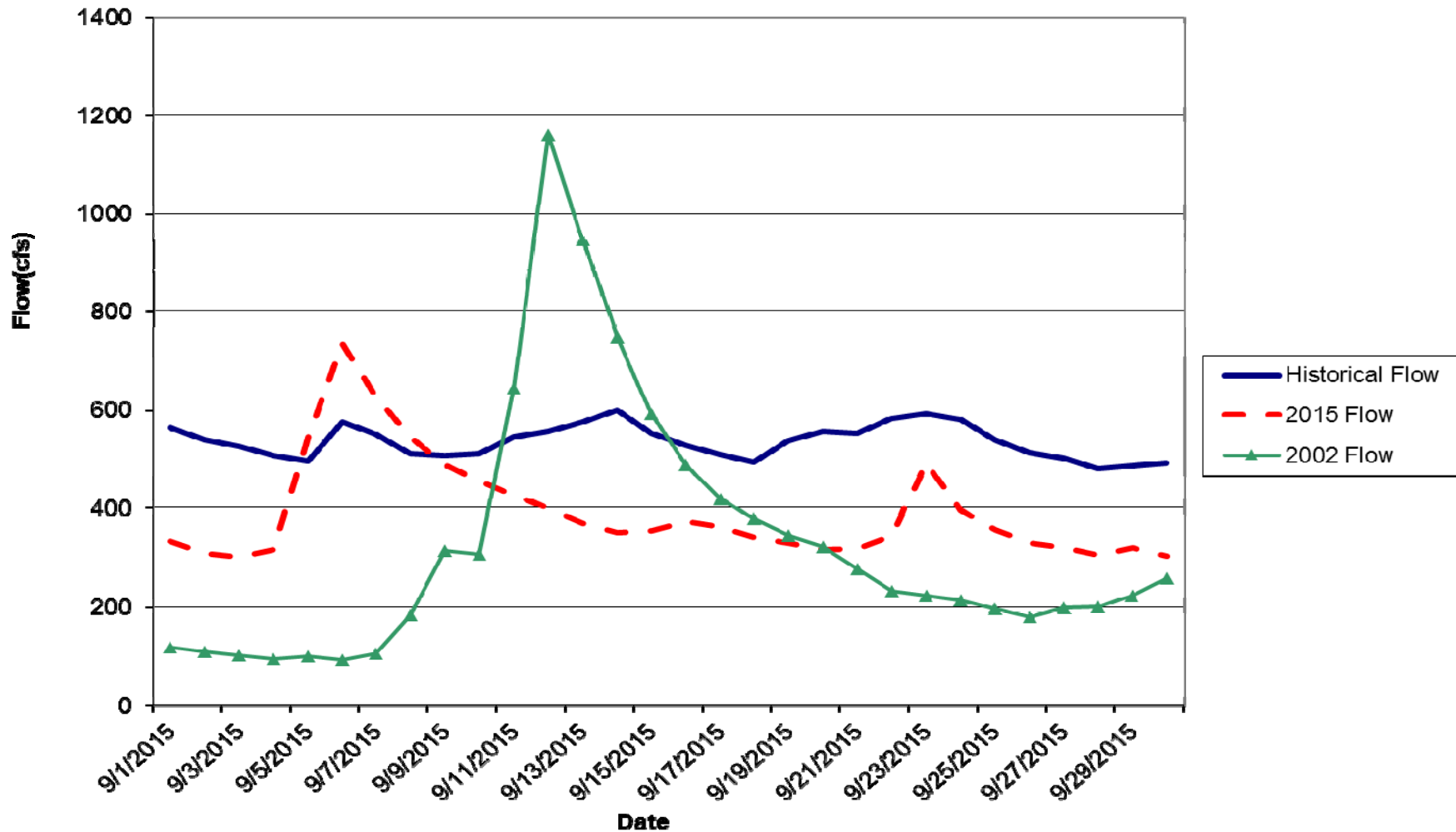
ANIMAS RIVER BELOW DURANGO PUMPING PLANT (09362520)



Stream Flow Data for the month of September is 69% of average

USGS STREAM FLOW DATA

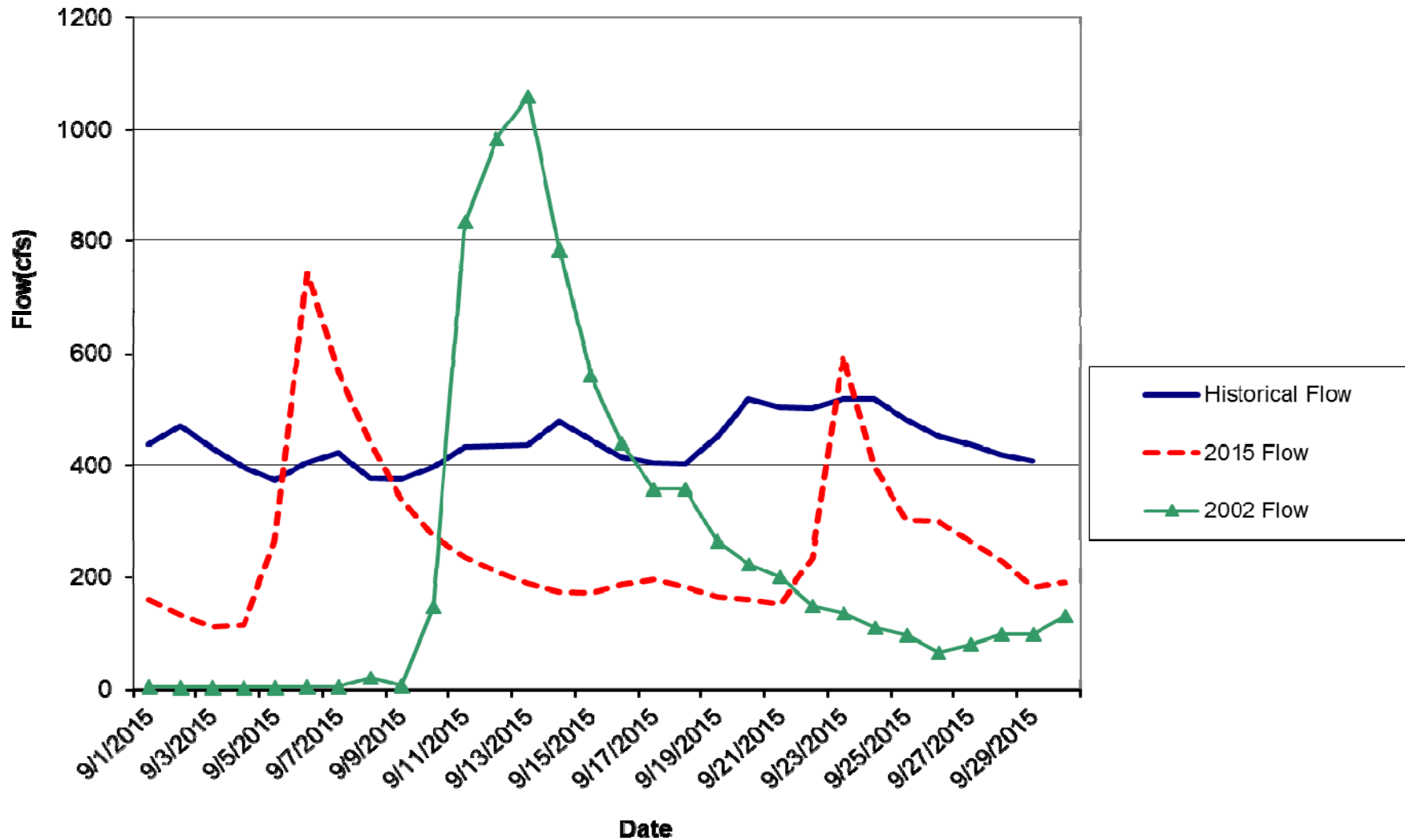
ANIMAS RIVER NEAR CEDAR HILL (09363500)



Stream Flow Data for the month of September is 73% of average

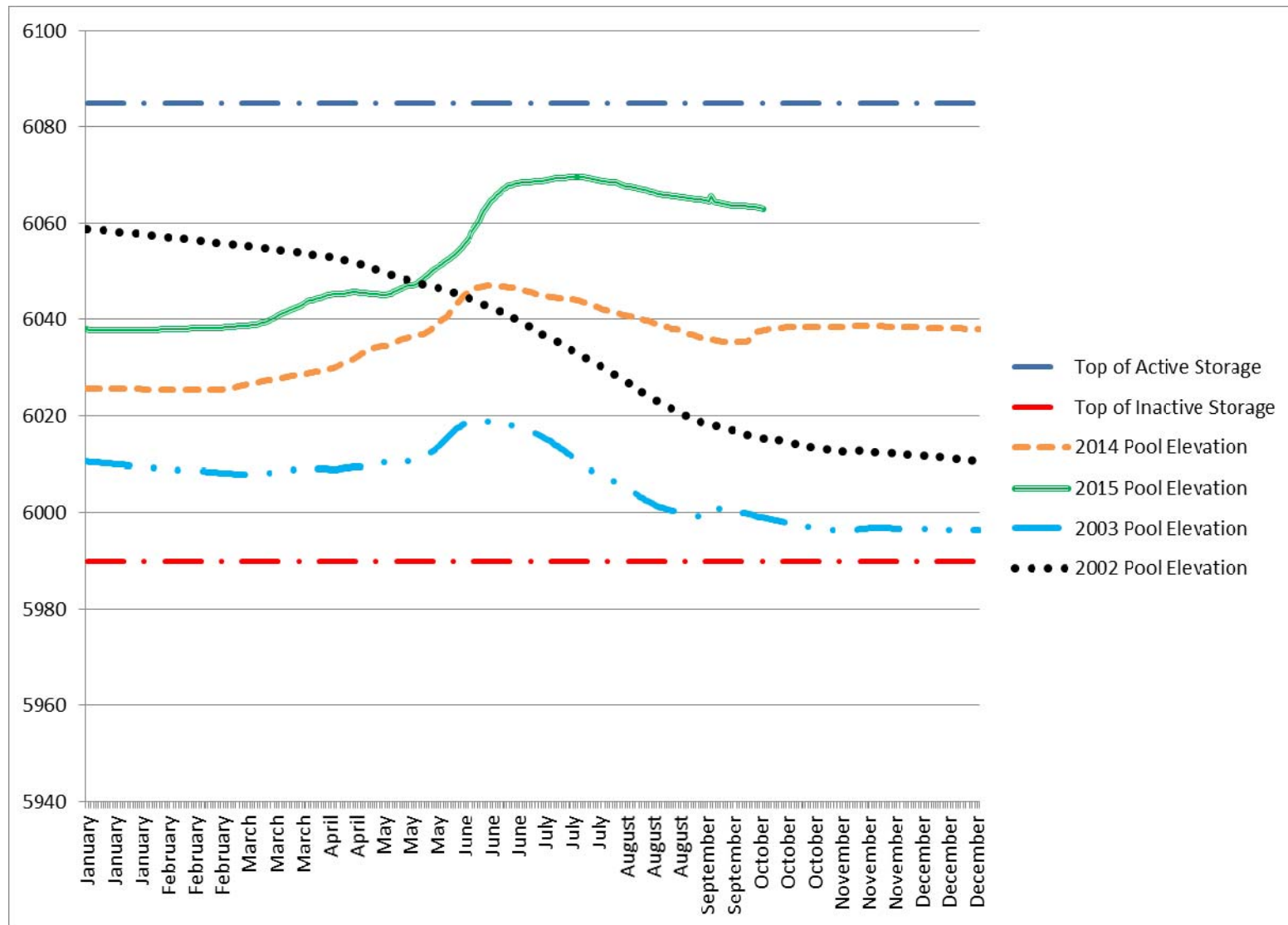
USGS STREAM FLOW DATA

ANIMAS RIVER AT FARMINGTON (09364500)



Stream Flow Data for the month of September is 60% of average

NAVAJO RESERVOIR POOL ELEVATION



Navajo Reservoir's current water content as of October 4th is 82% of capacity

Data Obtained from BOR Website

A-LP PROJECT UPDATE

- The pumping plant is not currently pumping and there are no releases.
- As of September 2nd, reservoir elevation is at 6881.30 with total storage of 114,035 af. Total surface area in the reservoir at this elevation is 1,484 acres.



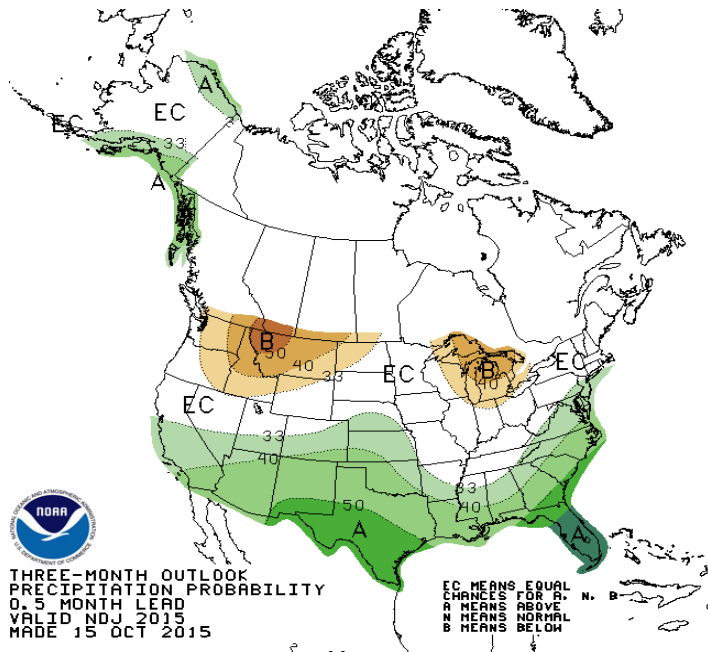
SEA SURFACE TEMPERATURE

- El Niño conditions are present.
- Positive equatorial sea surface temperature (SST) anomalies continue across most of the Pacific Ocean.
- There is a greater than 95% chance that El Niño will continue through Northern Hemisphere winter 2015-16, gradually weakening through spring 2016.

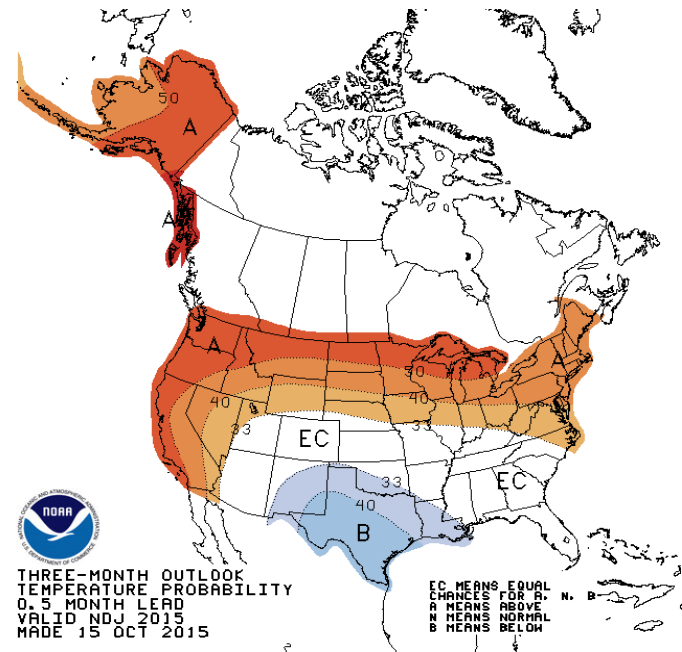


PRECIPITATION AND TEMPERATURE OUTLOOK

Precipitation Nov-Dec-Jan 2015/16



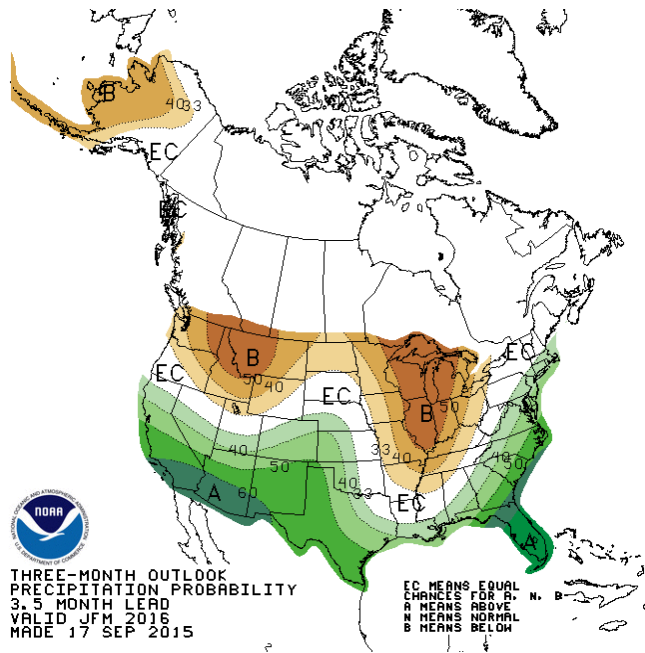
Temperature Nov-Dec-Jan 2015/16



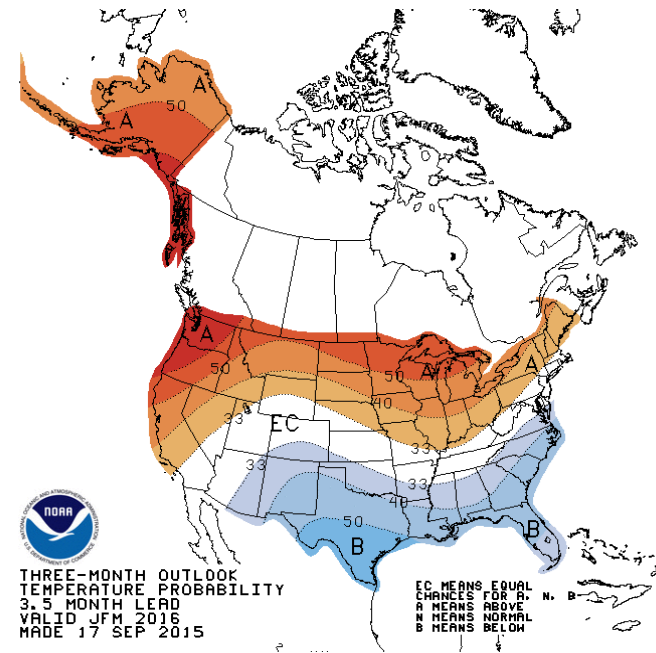
Precip	Temp	Probability anomaly as shown on map	Probability of occurrence for each Equal			Most likely category
			A	N	B	
Green shades	Red shades	40%-50%	73.3%-83.3%	23.3%-13.3%	3.3%	"Above"
		30%-40%	63.3%-73.3%	33.3%-23.3%	3.3%	"Above"
		20%-30%	53.3%-63.3%	33.3%	13.3%-3.3%	"Above"
		10%-20%	43.3%-53.3%	33.3%	23.3%-13.3%	"Above"
		5%-10%	38.3%-43.3%	33.3%	23.3%-28.3%	"Above"
0%-5%	0%-5%	33.3%-38.3%	33.3%	33.3%-28.3%	"Above"	
Grey	Grey	0%-5%	30.8%-33.3%	33.3%-38.3%	30.8%-33.3%	"Near Normal"
		5%-10%	28.3%-30.8%	38.3%-43.3%	28.3%-30.8%	"Near Normal"
Orange/Red shades	Blue shades	0%-5%	33.3%-28.3%	33.3%	33.3%-38.3%	"Below"
		5%-10%	28.3%-23.3%	33.3%	38.3%-43.3%	"Below"
		10%-20%	23.3%-13.3%	33.3%	43.3%-53.3%	"Below"
		20%-30%	13.3%-3.3%	33.3%	53.3%-63.3%	"Below"
		30%-40%	3.3%	33.3%-23.3%	63.3%-73.3%	"Below"
40%-50%	3.3%	23.3%-13.3%	73.3%-83.3%	"Below"		
White	White	0%	33.3%	33.3%	33.3%	"Equal Chances"

PRECIPITATION AND TEMPERATURE OUTLOOK

Precipitation Jan-Feb-Mar 2016



Temperature Jan-Feb-Mar 2016



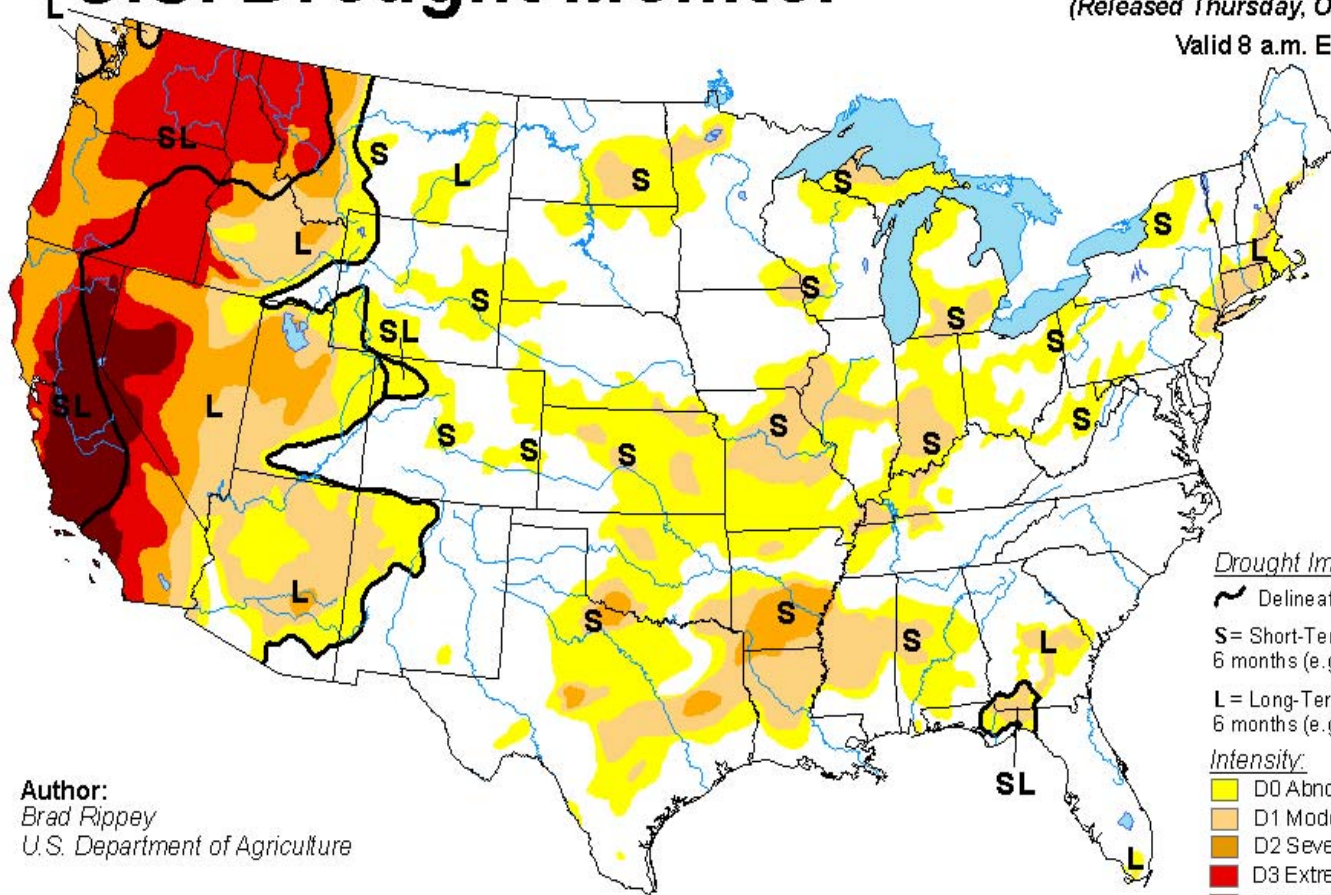
Precip	Temp	Probability anomaly as shown on map	Probability of occurrence for each Equal			Most likely category
			A	N	B	
Green shades	Red shades	40%-50%	73.3%-83.3%	23.3%-13.3%	3.3%	"Above"
		30%-40%	63.3%-73.3%	33.3%-23.3%	3.3%	"Above"
		20%-30%	53.3%-63.3%	33.3%	13.3%-3.3%	"Above"
		10%-20%	43.3%-53.3%	33.3%	23.3%-13.3%	"Above"
		5%-10%	38.3%-43.3%	33.3%	23.3%-28.3%	"Above"
		0%-5%	33.3%-38.3%	33.3%	33.3%-28.3%	"Above"
Grey	Grey	0%-5%	30.8%-33.3%	33.3%-38.3%	30.8%-33.3%	"Near Normal"
		5%-10%	28.3%-30.8%	38.3%-43.3%	28.3%-30.8%	"Near Normal"
Orange and Red shades	Blue shades	0%-5%	33.3%-28.3%	33.3%	33.3%-38.3%	"Below"
		5%-10%	28.3%-23.3%	33.3%	38.3%-43.3%	"Below"
		10%-20%	23.3%-13.3%	33.3%	43.3%-53.3%	"Below"
		20%-30%	13.3%-3.3%	33.3%	53.3%-63.3%	"Below"
		30%-40%	3.3%	33.3%-23.3%	63.3%-73.3%	"Below"
		40%-50%	3.3%	23.3%-13.3%	73.3%-83.3%	"Below"
White	White	0%	33.3%	33.3%	33.3%	"Equal Chances"

U.S. Drought Monitor

October 27, 2015

(Released Thursday, Oct. 29, 2015)

Valid 8 a.m. EDT



Drought Impact Types:

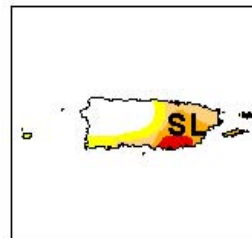
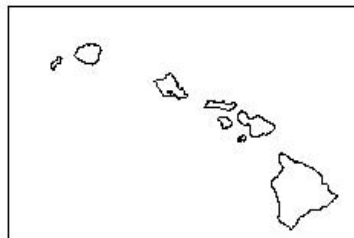
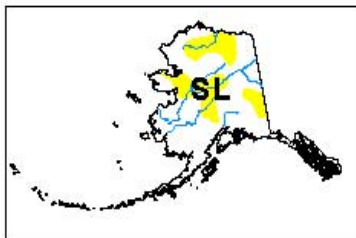
- ~ Delineates dominant impacts
- S= Short-Term, typically less than 6 months (e.g. agriculture, grasslands)
- L= Long-Term, typically greater than 6 months (e.g. hydrology, ecology)

Intensity:

- Yellow: D0 Abnormally Dry
- Light Orange: D1 Moderate Drought
- Orange: D2 Severe Drought
- Red: D3 Extreme Drought
- Dark Red: D4 Exceptional Drought

The Drought Monitor focuses on broad-scale conditions. Local conditions may vary. See accompanying text summary for forecast statements.

Author:
Brad Rippey
U.S. Department of Agriculture



<http://droughtmonitor.unl.edu/>

