

The logo for the San Juan Water Commission (SJWC) is located in the top left corner. It consists of the letters "SJWC" in a bold, blue, sans-serif font, enclosed within a rounded rectangular border. Below the letters, the full name "San Juan Water Commission" is written in a smaller, blue, sans-serif font.

SJWC

San Juan Water Commission

A decorative graphic on the left side of the slide features five teal-colored circles of varying sizes. The largest circle is at the top left, with four smaller circles of different sizes arranged around it, creating a cluster that overlaps the title text.

Water Resource Update

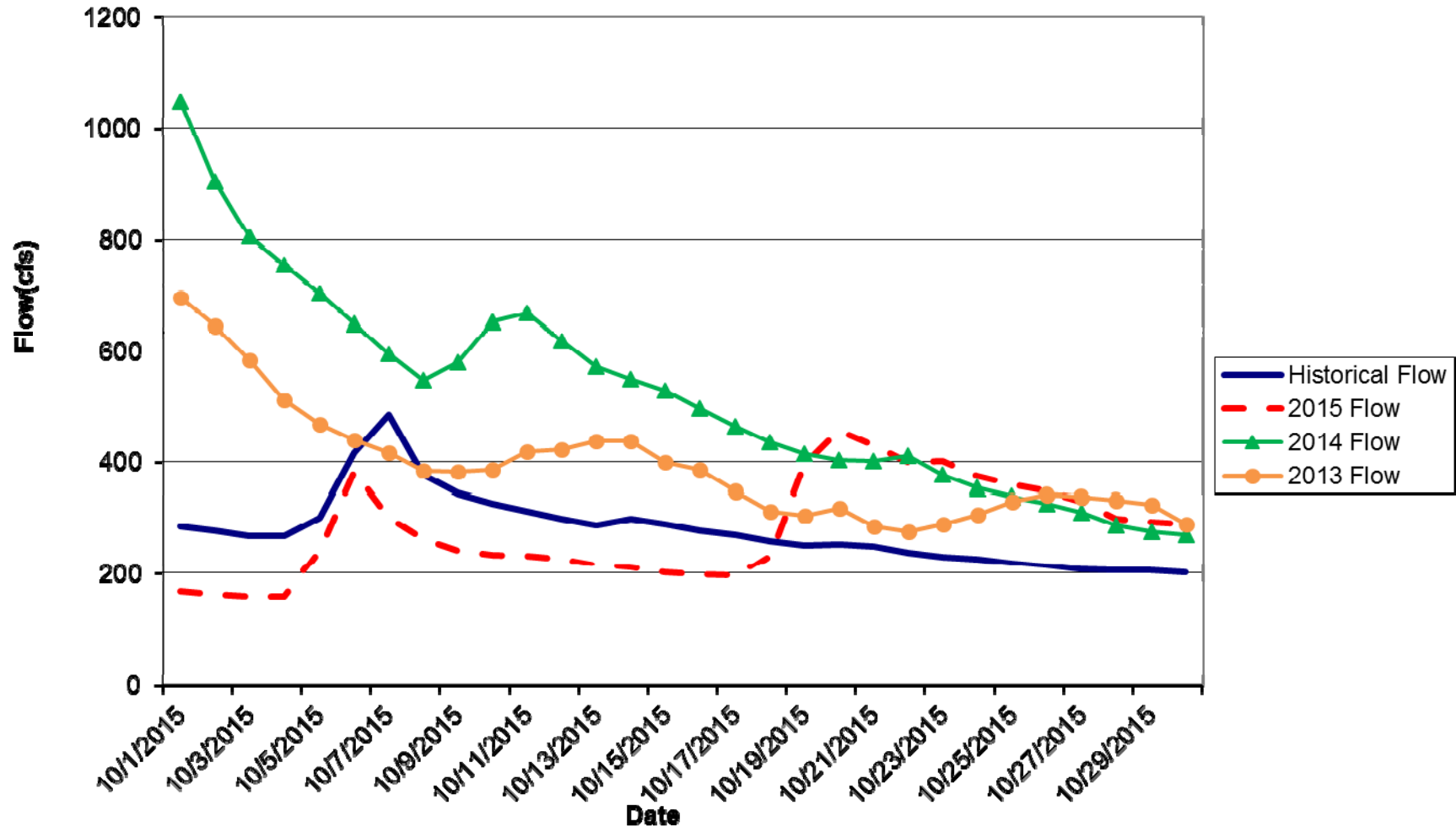
November 4, 2015



-
- Current Stream Conditions
 - Current Navajo Reservoir Status
 - A-LP Project Update
 - Snowpack Status
 - Current Climate Conditions and Outlook

USGS STREAM FLOW DATA

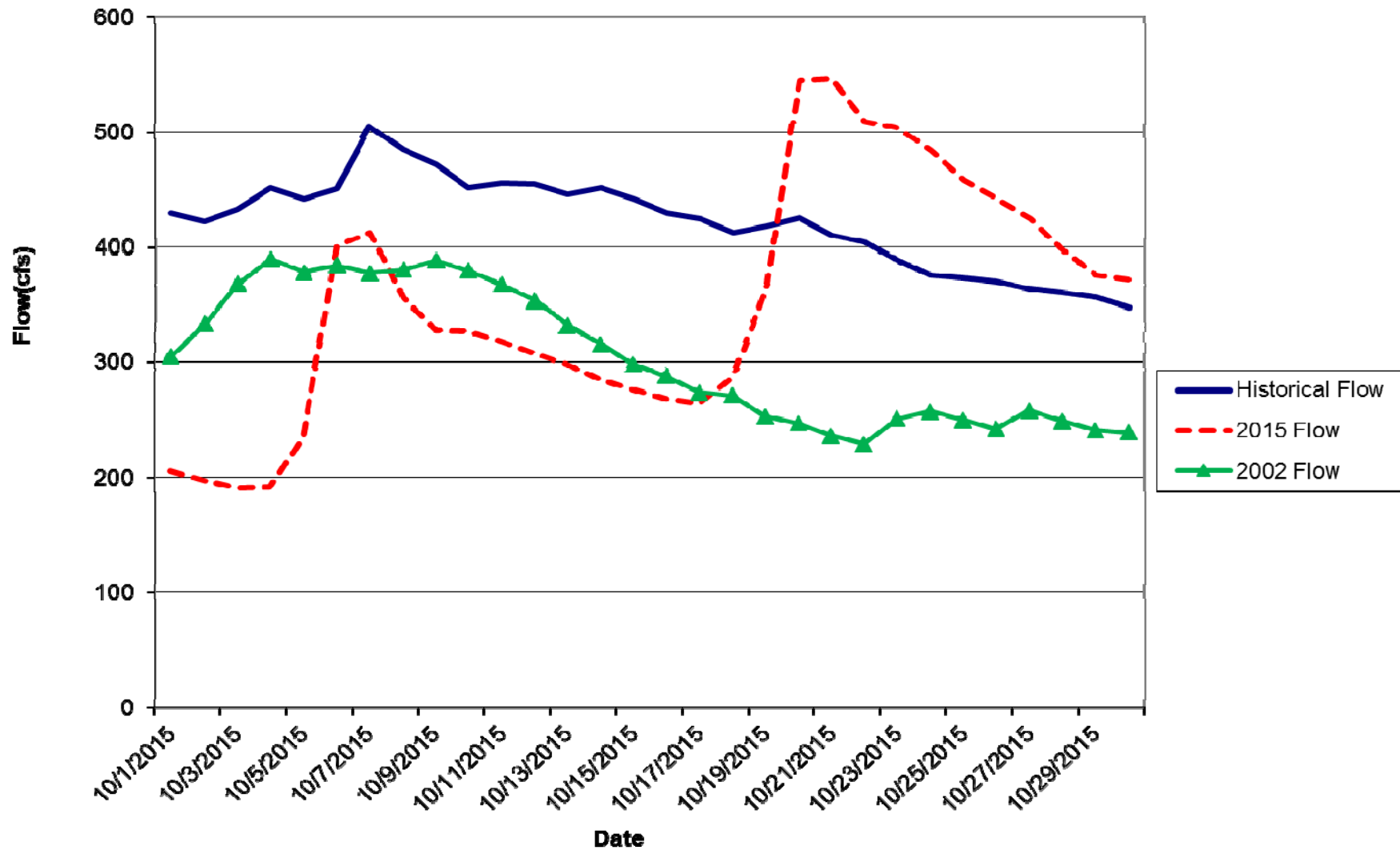
ANIMAS RIVER AT TALL TIMBER "TEFT" (09359500)



Stream Flow Data for the month of October is 101% of average.

USGS STREAM FLOW DATA

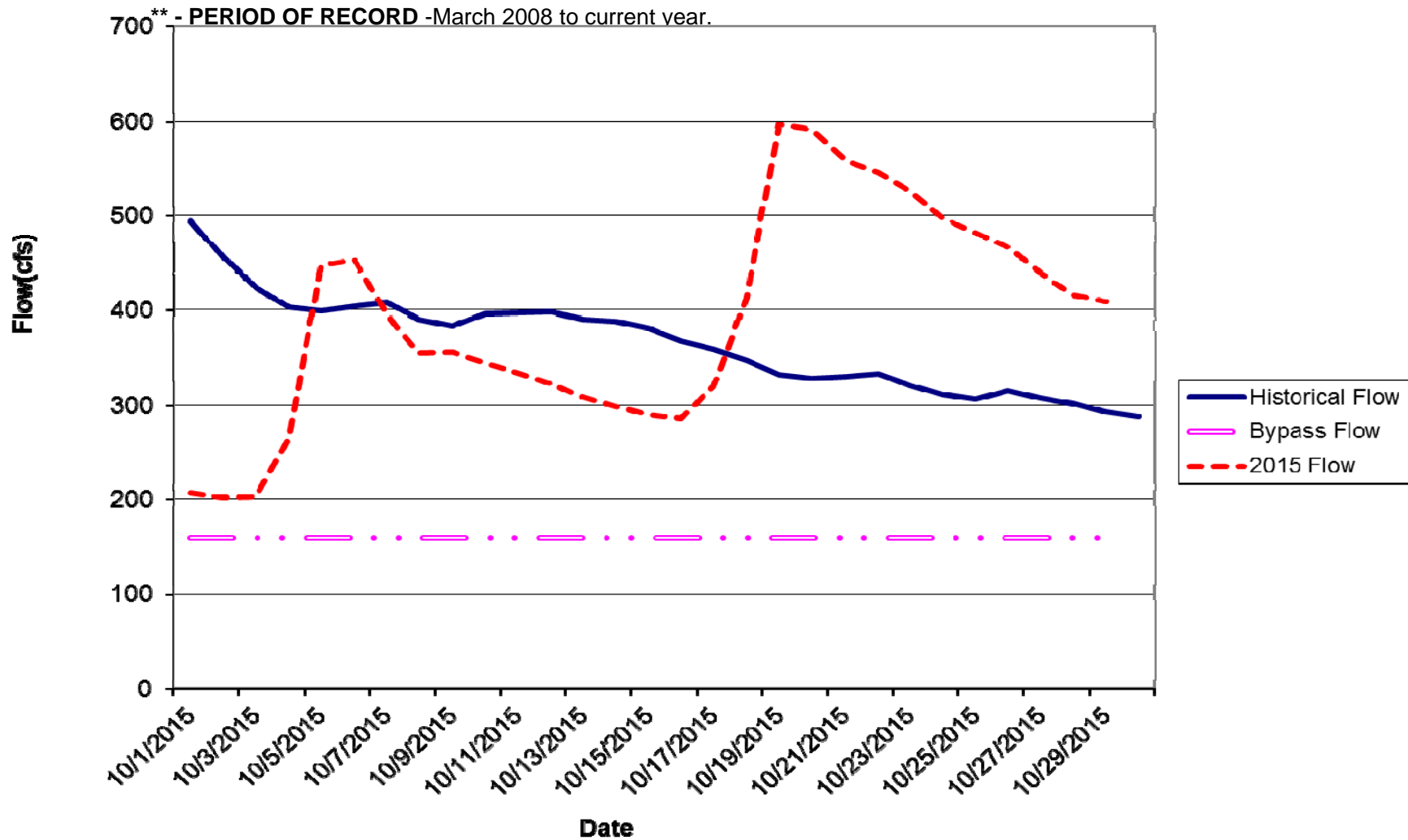
ANIMAS RIVER AT DURANGO (09359500)



Stream Flow Data for the month of October is 84% of average

USGS STREAM FLOW DATA

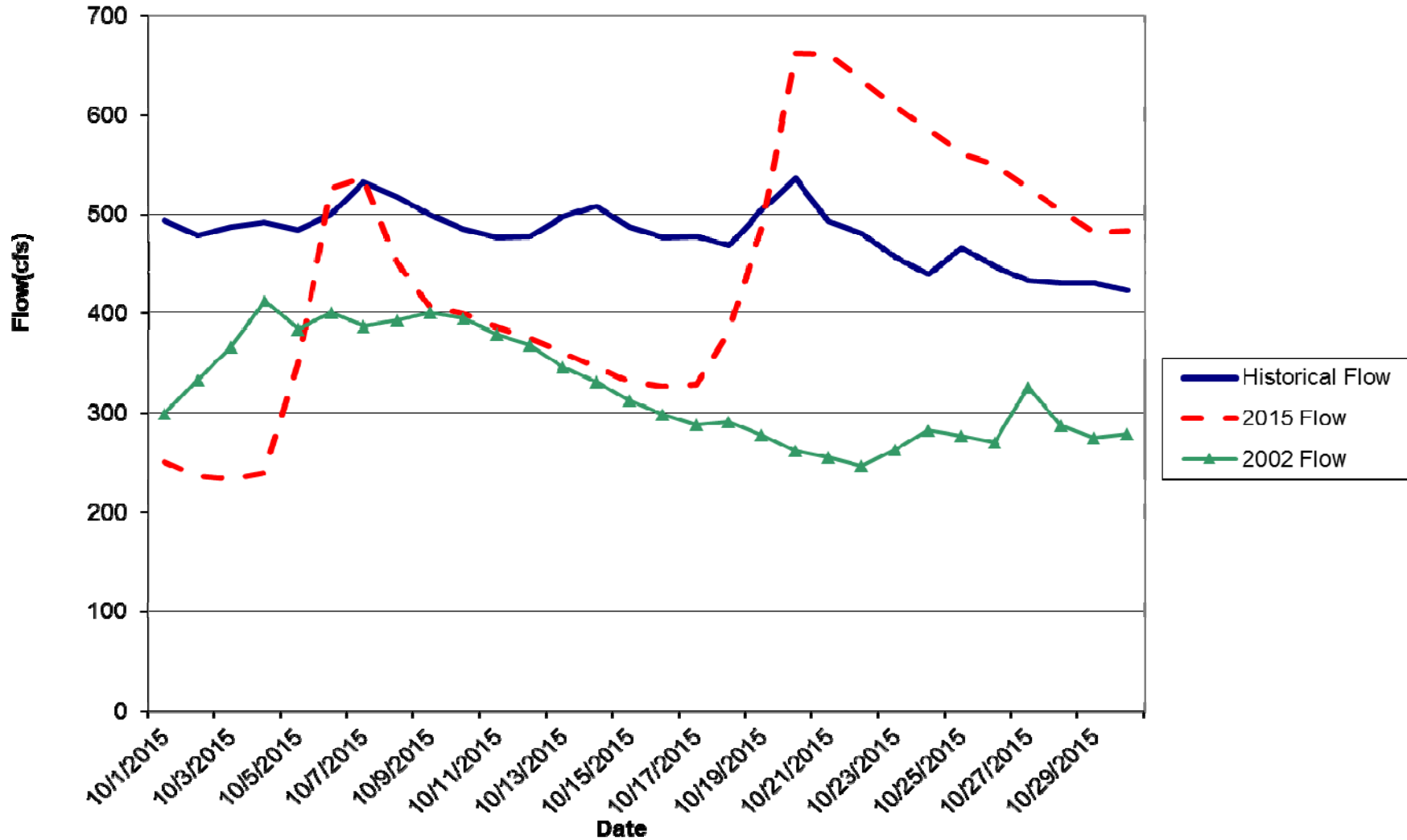
ANIMAS RIVER BELOW DURANGO PUMPING PLANT (09362520)



Stream Flow Data for the month of October is 106% of average

USGS STREAM FLOW DATA

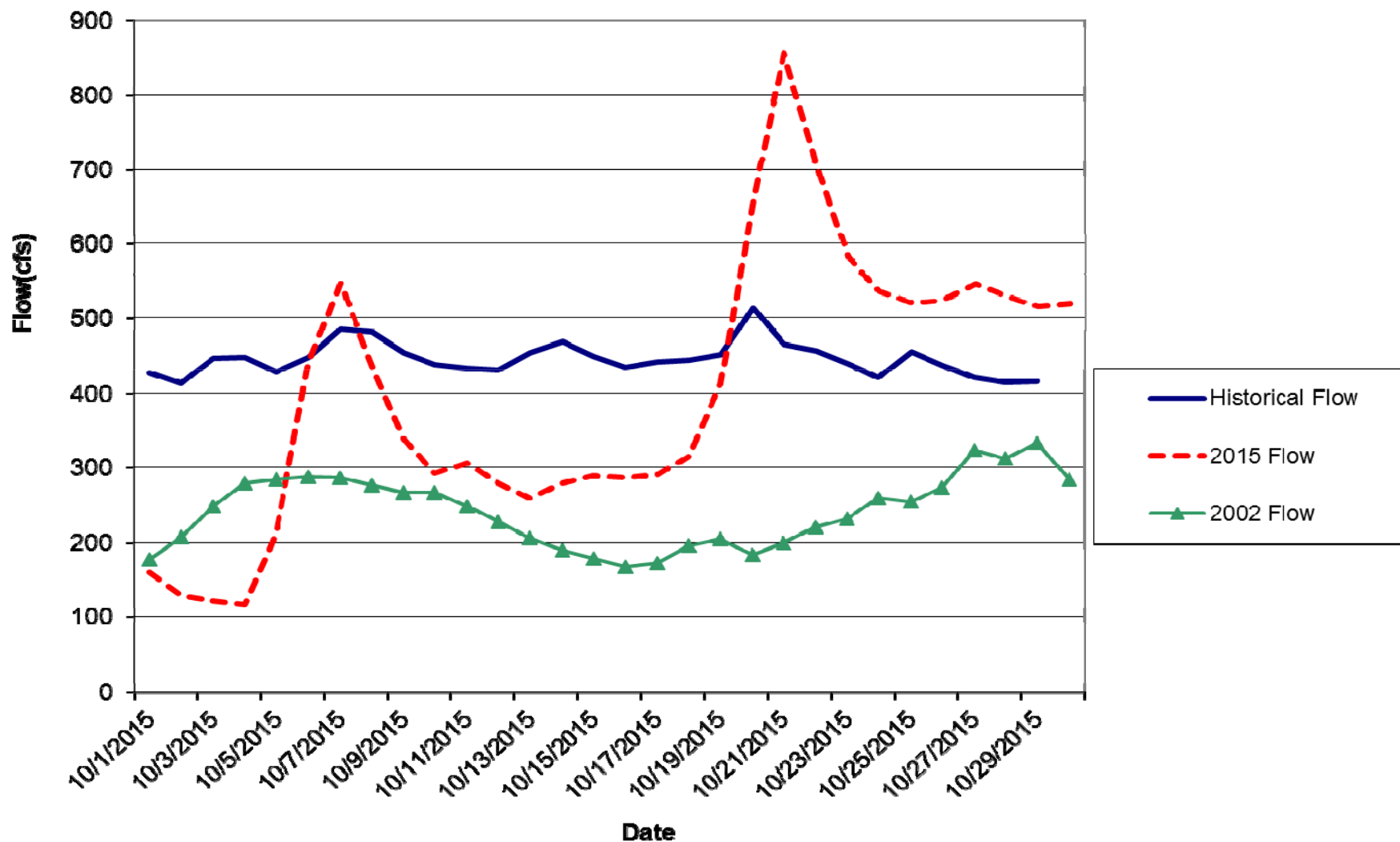
ANIMAS RIVER NEAR CEDAR HILL (09363500)



Stream Flow Data for the month of October is 92% of average

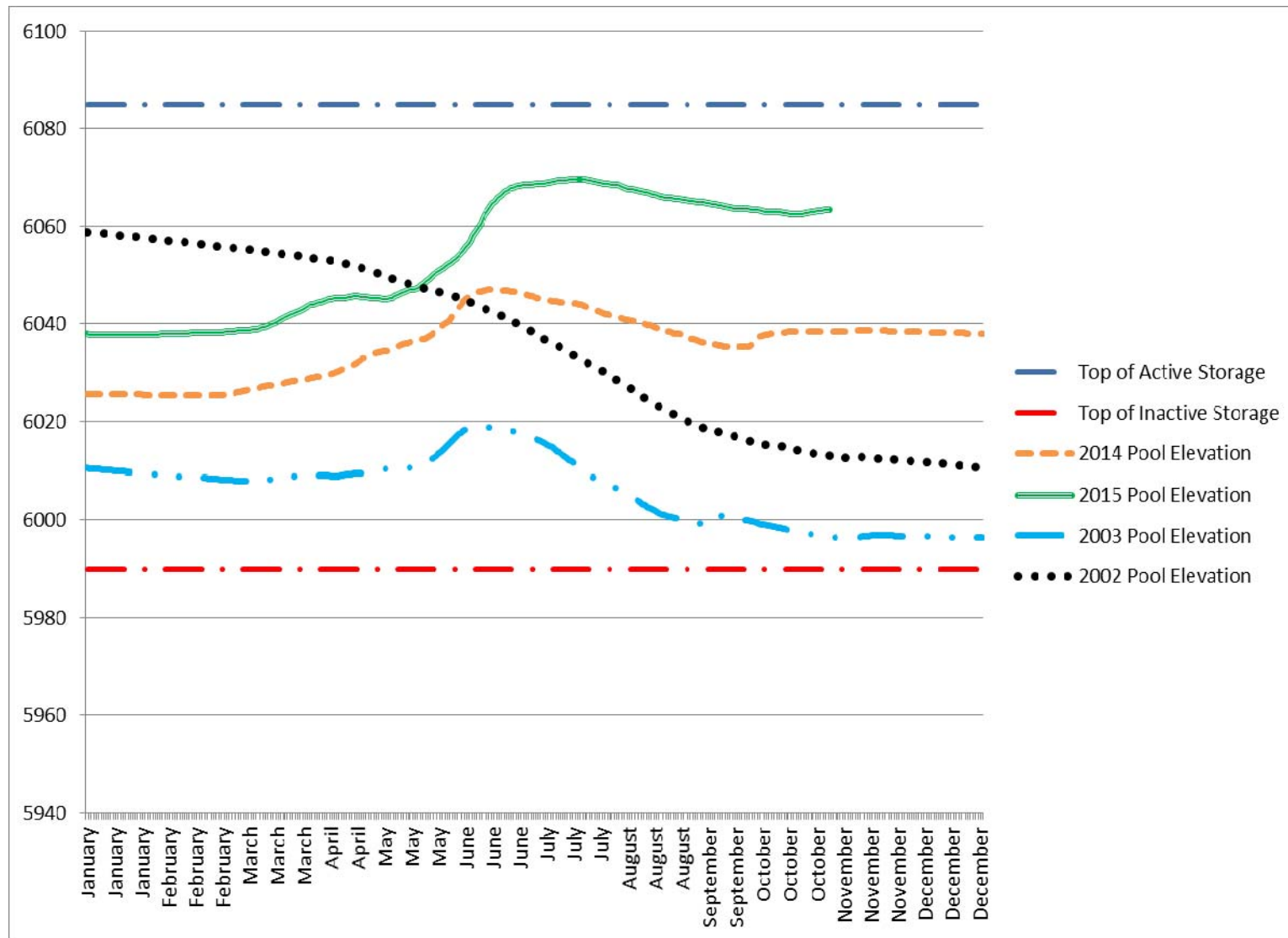
USGS STREAM FLOW DATA

ANIMAS RIVER AT FARMINGTON (09364500)



Stream Flow Data for the month of October is 91% of average

NAVAJO RESERVOIR POOL ELEVATION



Navajo Reservoir's current water content as of October 29th is 82% of capacity

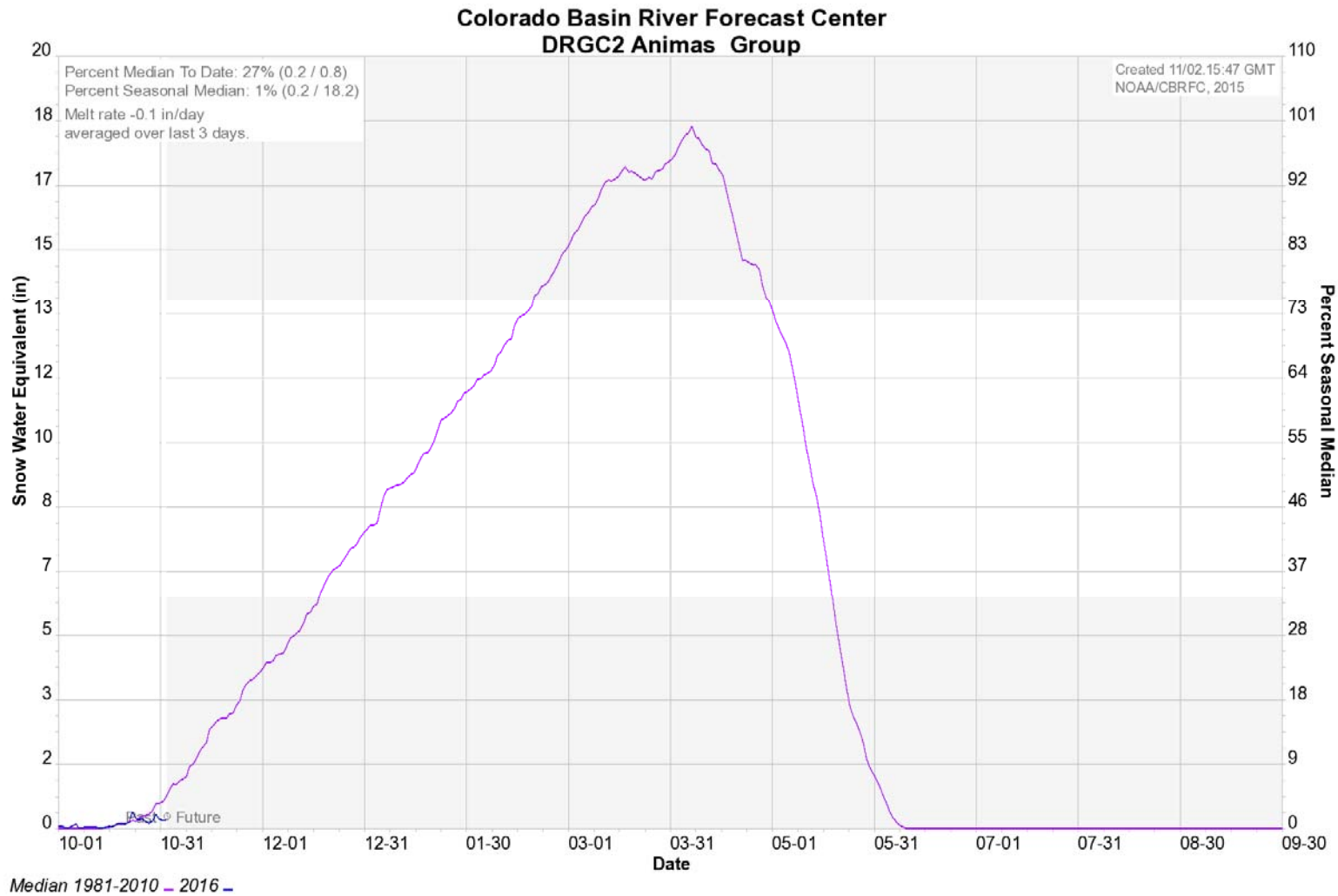
Data Obtained from BOR Website

A-LP PROJECT UPDATE

- The pumping plant is not currently pumping and there are no reservoir releases.
- As of November 1st, reservoir elevation is at 6880.71 with total storage of 113,161 af. Total surface area of the reservoir at this elevation is 1,479 acres.
- Evaporation for the month of October was 172 acre-feet.



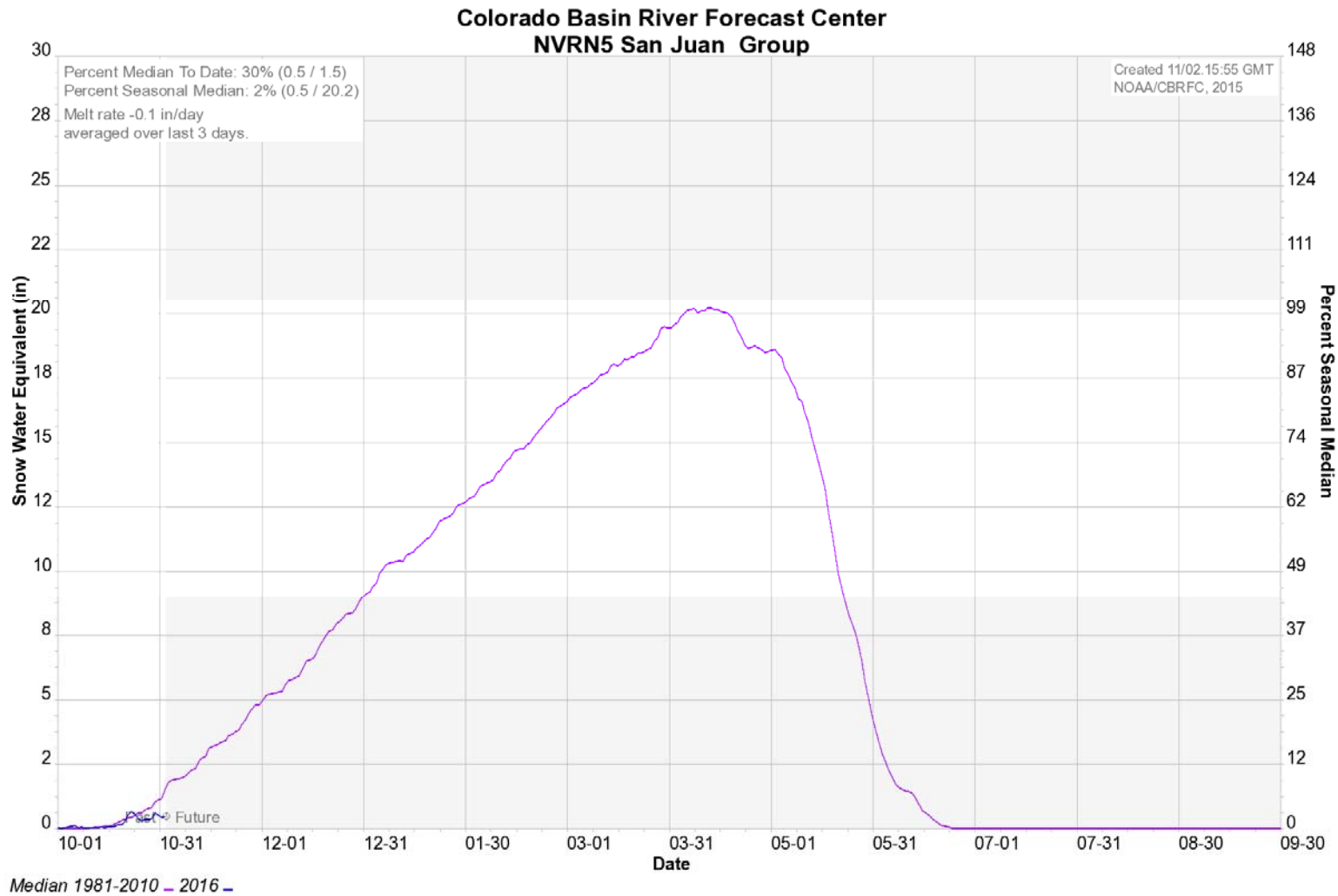
ANIMAS BASIN SNOWPACK LEVELS



Snow Water Equivalent is 27% of Median as of November 2nd



SAN JUAN BASIN SNOWPACK LEVELS



Snow Water Equivalent is 30% of Median as of November 2nd



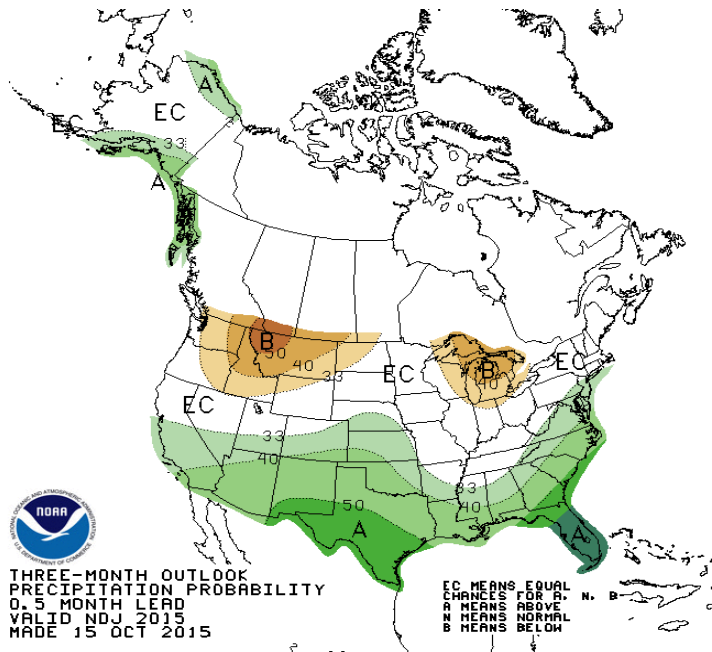
SEA SURFACE TEMPERATURE

- El Niño conditions are present.
- Positive equatorial sea surface temperature (SST) anomalies continue across most of the Pacific Ocean.
- There is an approximately 95% chance that El Niño will continue through Northern Hemisphere winter 2015-16, gradually weakening through spring 2016.

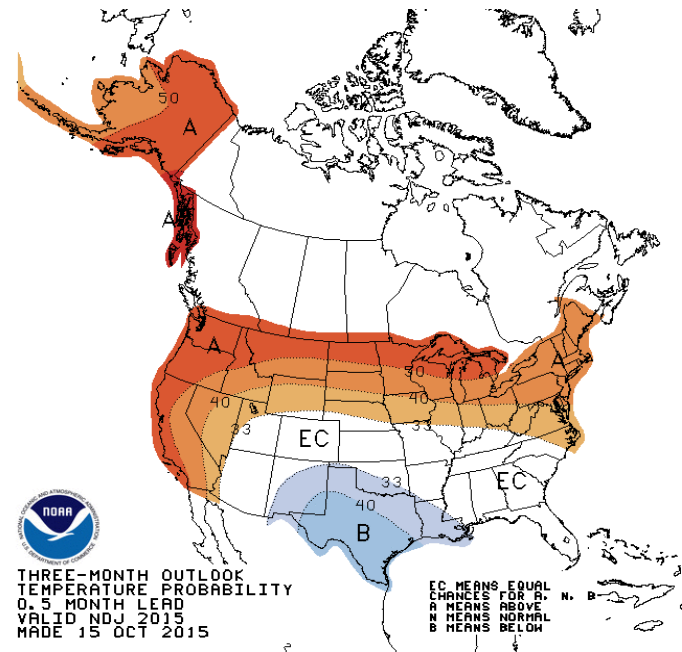


PRECIPITATION AND TEMPERATURE OUTLOOK

Precipitation Nov-Dec-Jan 2015/16



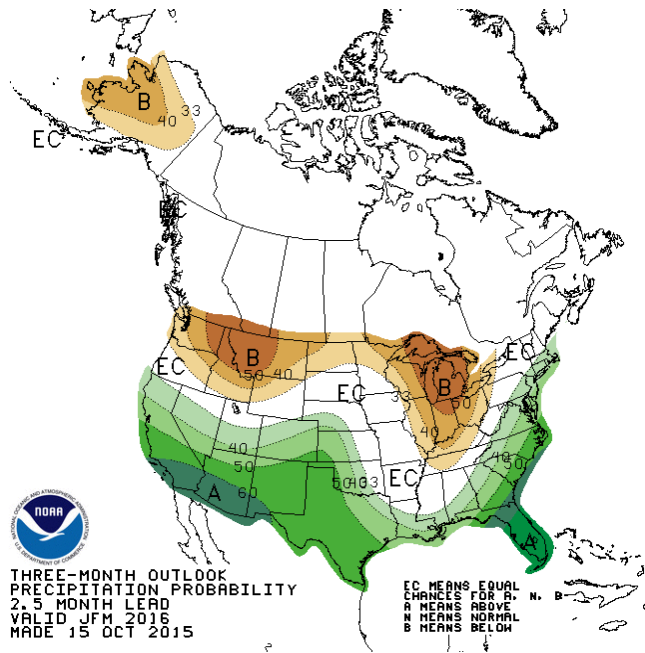
Temperature Nov-Dec-Jan 2015/16



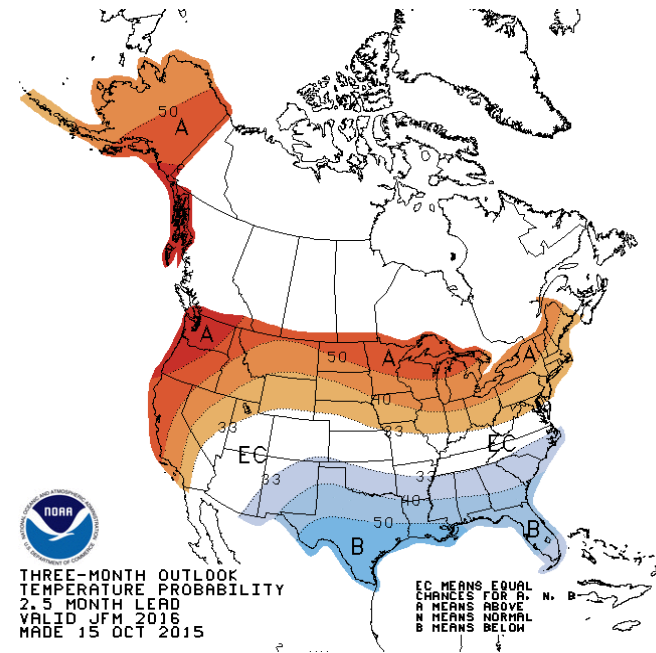
Precip	Temp	Probability anomaly as shown on map	Probability of occurrence for each Equal			Most likely category
			A	N	B	
Green shades	Red shades	40%-50%	73.3%-83.3%	23.3%-13.3%	3.3%	"Above"
		30%-40%	63.3%-73.3%	33.3%-23.3%	3.3%	"Above"
		20%-30%	53.3%-63.3%	33.3%	13.3%-3.3%	"Above"
		10%-20%	43.3%-53.3%	33.3%	23.3%-13.3%	"Above"
		5%-10%	38.3%-43.3%	33.3%	23.3%-28.3%	"Above"
0%-5%	0%-5%	33.3%-38.3%	33.3%	33.3%-28.3%	"Above"	
Grey	Grey	0%-5%	30.8%-33.3%	33.3%-38.3%	30.8%-33.3%	"Near Normal"
		5%-10%	28.3%-30.8%	38.3%-43.3%	28.3%-30.8%	"Near Normal"
Orange and Red shades	Blue shades	0%-5%	33.3%-28.3%	33.3%	33.3%-38.3%	"Below"
		5%-10%	28.3%-23.3%	33.3%	38.3%-43.3%	"Below"
		10%-20%	23.3%-13.3%	33.3%	43.3%-53.3%	"Below"
		20%-30%	13.3%-3.3%	33.3%	53.3%-63.3%	"Below"
		30%-40%	3.3%	33.3%-23.3%	63.3%-73.3%	"Below"
40%-50%	3.3%	23.3%-13.3%	73.3%-83.3%	"Below"		
White	White	0%	33.3%	33.3%	33.3%	"Equal Chances"

PRECIPITATION AND TEMPERATURE OUTLOOK

Precipitation Jan-Feb-Mar 2016



Temperature Jan-Feb-Mar 2016



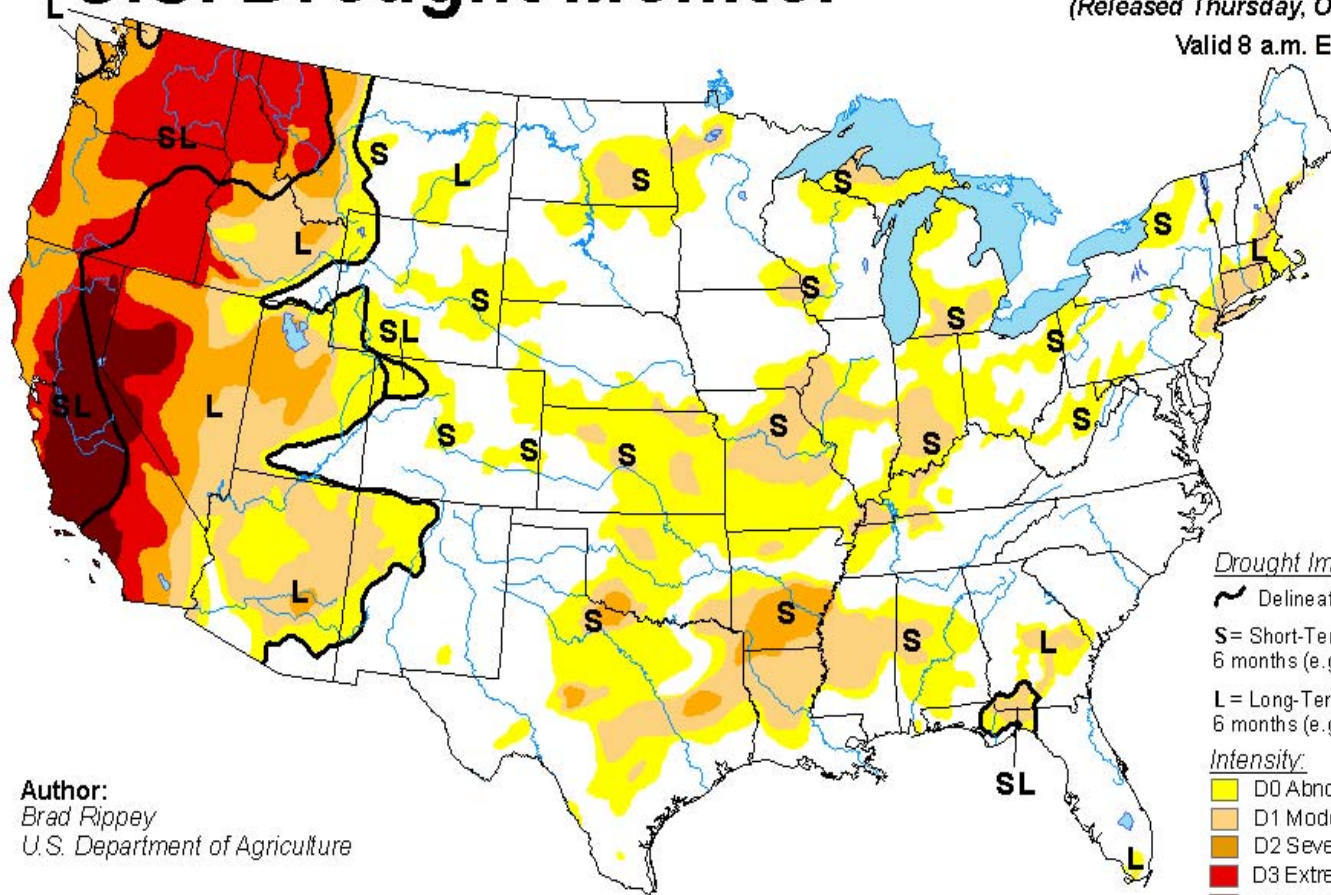
Precip	Temp	Probability anomaly as shown on map	Probability of occurrence for each Equal			Most likely category
			A	N	B	
Green shades	Red shades	40%-50%	73.3%-83.3%	23.3%-13.3%	3.3%	"Above"
		30%-40%	63.3%-73.3%	33.3%-23.3%	3.3%	"Above"
		20%-30%	53.3%-63.3%	33.3%	13.3%-3.3%	"Above"
		10%-20%	43.3%-53.3%	33.3%	23.3%-13.3%	"Above"
		5%-10%	38.3%-43.3%	33.3%	23.3%-28.3%	"Above"
Light Green	Light Orange	0%-5%	33.3%-38.3%	33.3%	33.3%-28.3%	"Above"
		0%-5%	30.8%-33.3%	33.3%-38.3%	30.8%-33.3%	"Near Normal"
Grey	Grey	5%-10%	28.3%-30.8%	38.3%-43.3%	28.3%-30.8%	"Near Normal"
		0%-5%	33.3%-28.3%	33.3%	33.3%-38.3%	"Below"
Light Orange	Light Blue	5%-10%	28.3%-23.3%	33.3%	38.3%-43.3%	"Below"
		10%-20%	23.3%-13.3%	33.3%	43.3%-53.3%	"Below"
		20%-30%	13.3%-3.3%	33.3%	53.3%-63.3%	"Below"
Dark Orange	Dark Blue	30%-40%	3.3%	33.3%-23.3%	63.3%-73.3%	"Below"
		40%-50%	3.3%	23.3%-13.3%	73.3%-83.3%	"Below"
White	White	0%	33.3%	33.3%	33.3%	"Equal Chances"

U.S. Drought Monitor

October 27, 2015

(Released Thursday, Oct. 29, 2015)

Valid 8 a.m. EDT



Drought Impact Types:

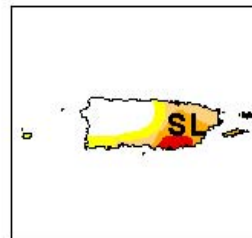
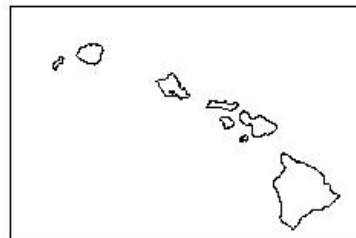
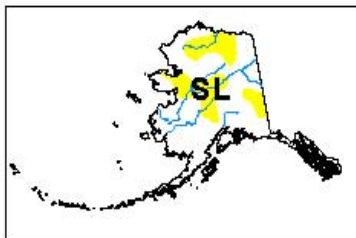
- ~ Delineates dominant impacts
- S= Short-Term, typically less than 6 months (e.g. agriculture, grasslands)
- L= Long-Term, typically greater than 6 months (e.g. hydrology, ecology)

Intensity:

- Yellow: D0 Abnormally Dry
- Light Orange: D1 Moderate Drought
- Orange: D2 Severe Drought
- Red: D3 Extreme Drought
- Dark Red: D4 Exceptional Drought

The Drought Monitor focuses on broad-scale conditions. Local conditions may vary. See accompanying text summary for forecast statements.

Author:
Brad Rippey
U.S. Department of Agriculture



<http://droughtmonitor.unl.edu/>

