

The logo for the San Juan Water Commission (SJWC) is located in the top left corner. It consists of the letters "SJWC" in a bold, blue, sans-serif font, enclosed within a rounded rectangular border. Below the letters, the full name "San Juan Water Commission" is written in a smaller, blue, sans-serif font.

SJWC

San Juan Water Commission

A decorative graphic on the left side of the slide features five teal-colored circles of varying sizes. The largest circle is at the top left, with four smaller circles of different sizes arranged below and to its right, creating a cluster-like effect.

Water Resource Update

May 6, 2015

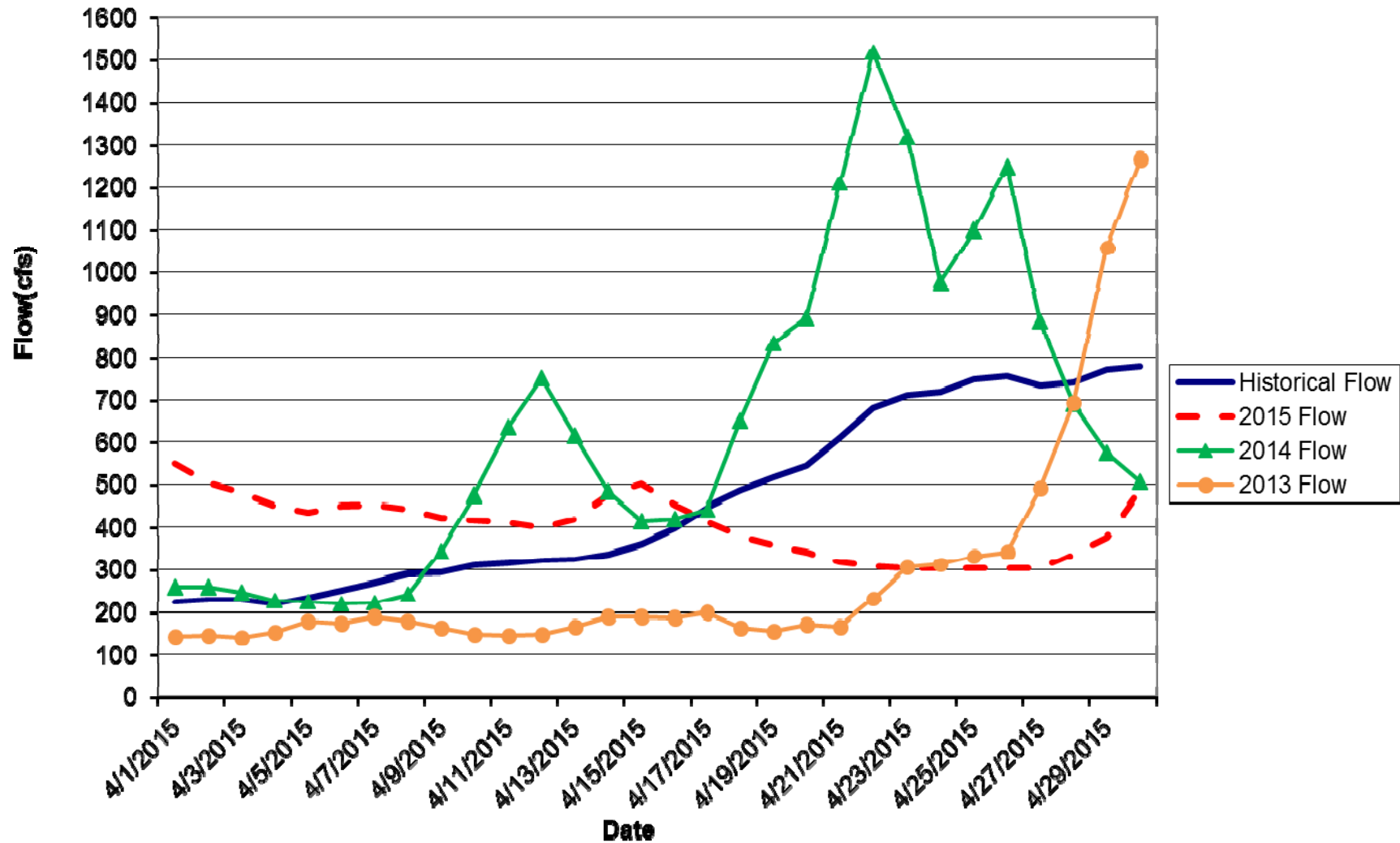


-
- Current Stream Conditions
 - Animas-La Plata Status
 - Current Navajo Reservoir Status
 - Current Snow Water Equivalent Status (SNOTEL)
 - Current Climate Conditions and Outlook



USGS STREAM FLOW DATA

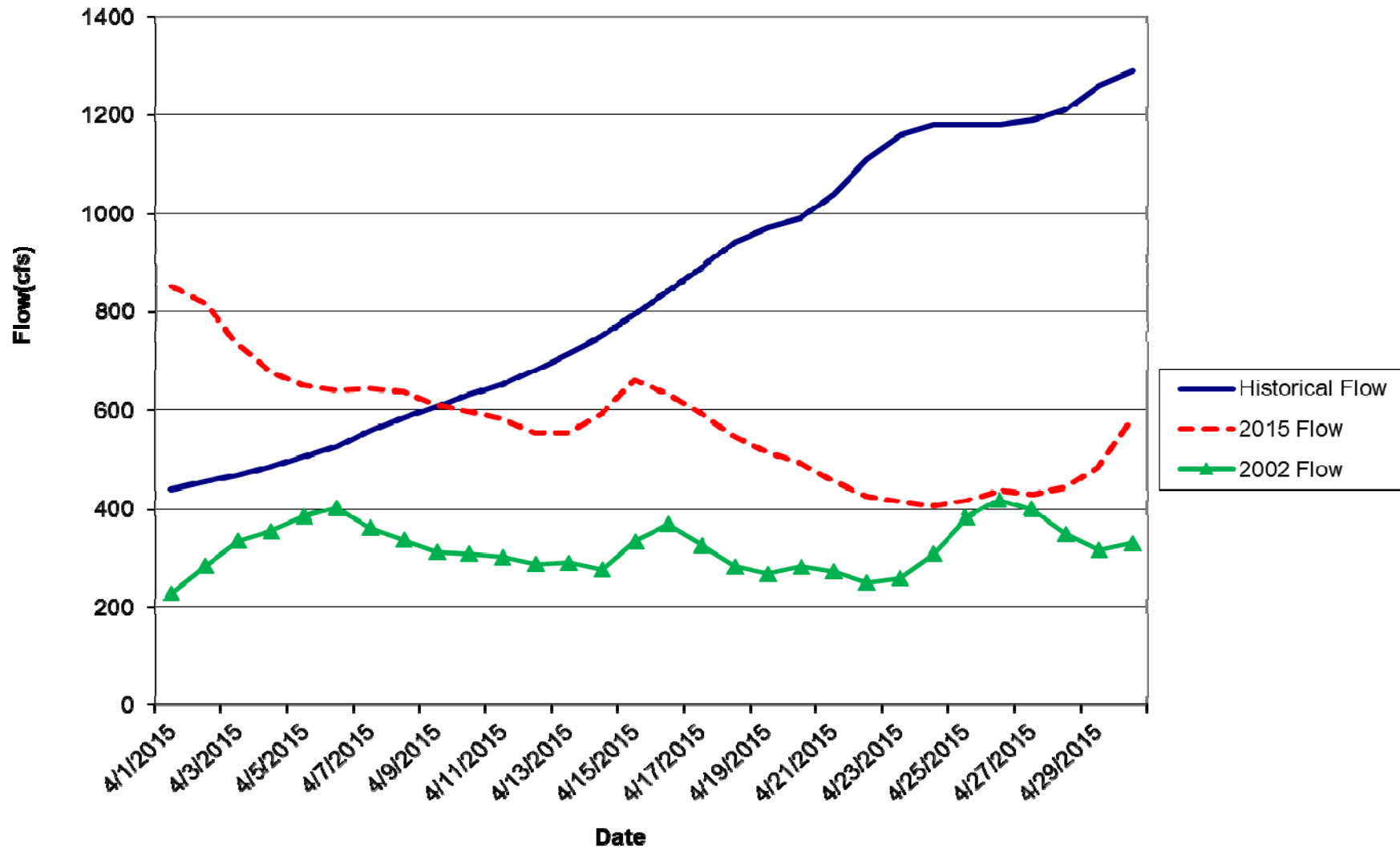
ANIMAS RIVER AT TALL TIMBER "TEFT" (09359500)



Stream Flow Data for the month of April 87% of average.

USGS STREAM FLOW DATA

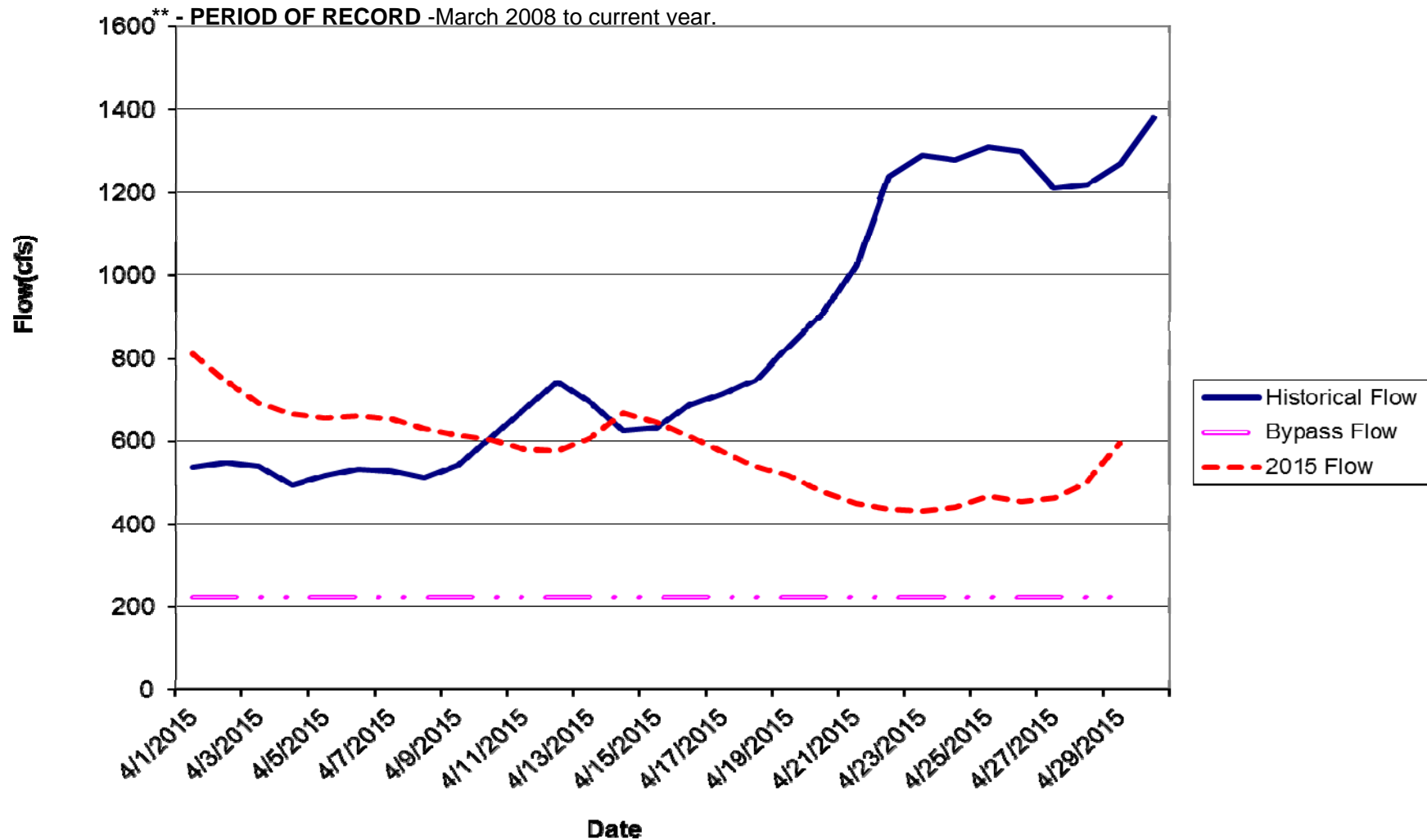
ANIMAS RIVER AT DURANGO (09359500)



Stream Flow Data for the month of April is 68% of average

USGS STREAM FLOW DATA

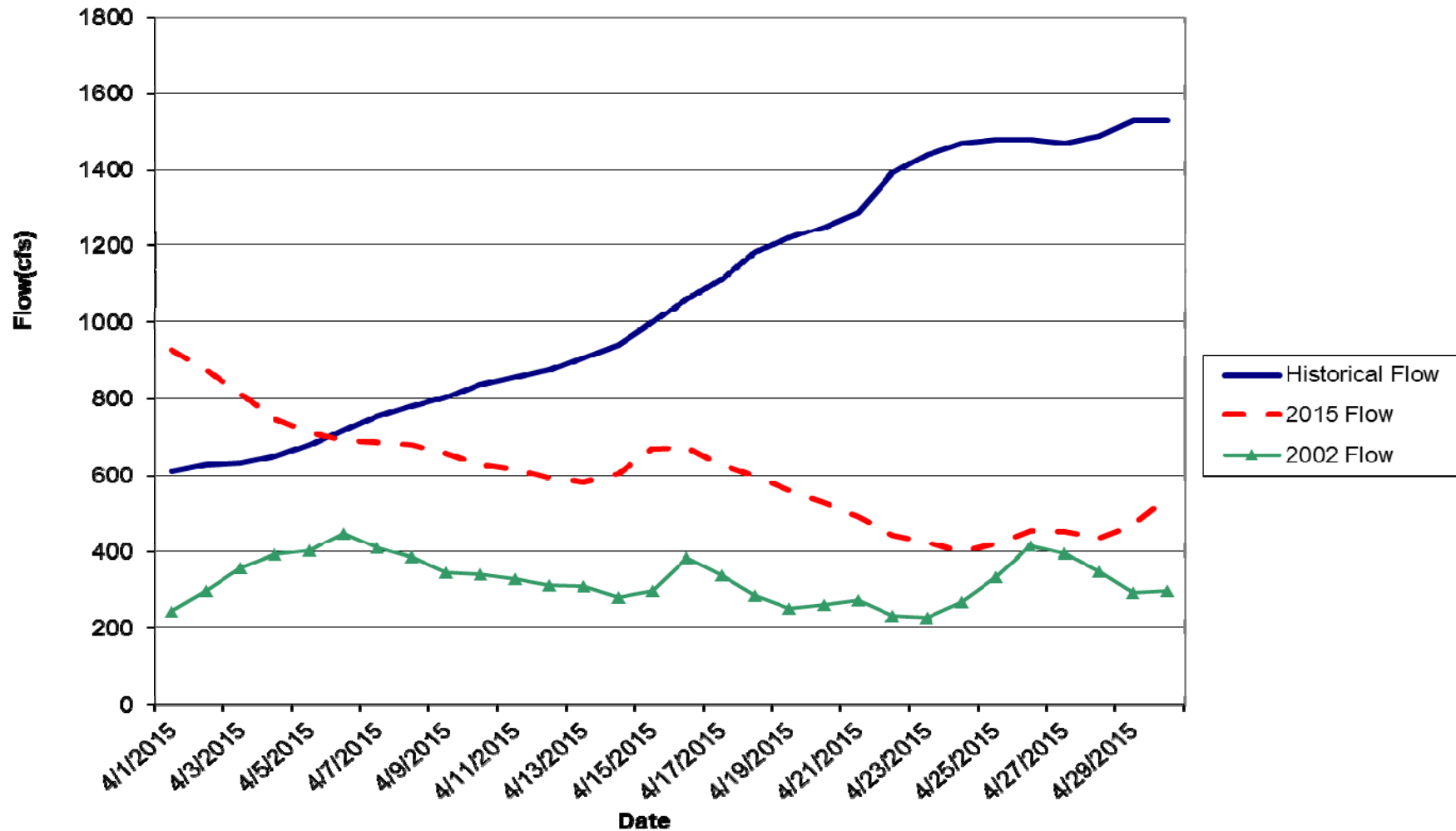
ANIMAS RIVER BELOW DURANGO PUMPING PLANT (09362520)



Stream Flow Data for the month of April is 70% of average

USGS STREAM FLOW DATA

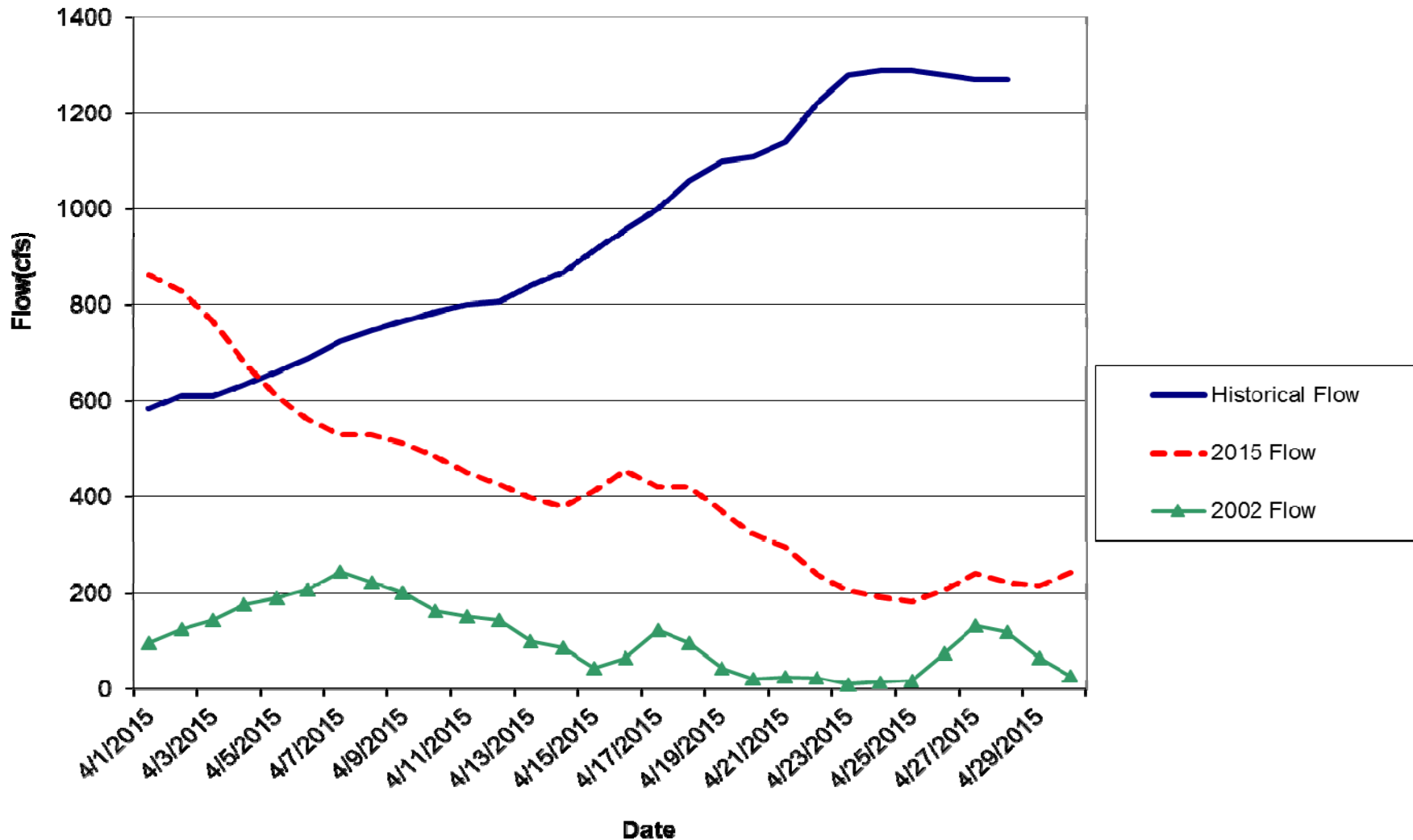
ANIMAS RIVER NEAR CEDAR HILL (09363500)



Stream Flow Data for the month of April is 56% of average

USGS STREAM FLOW DATA

ANIMAS RIVER AT FARMINGTON (09364500)



Stream Flow Data for the month of April is 44% of average

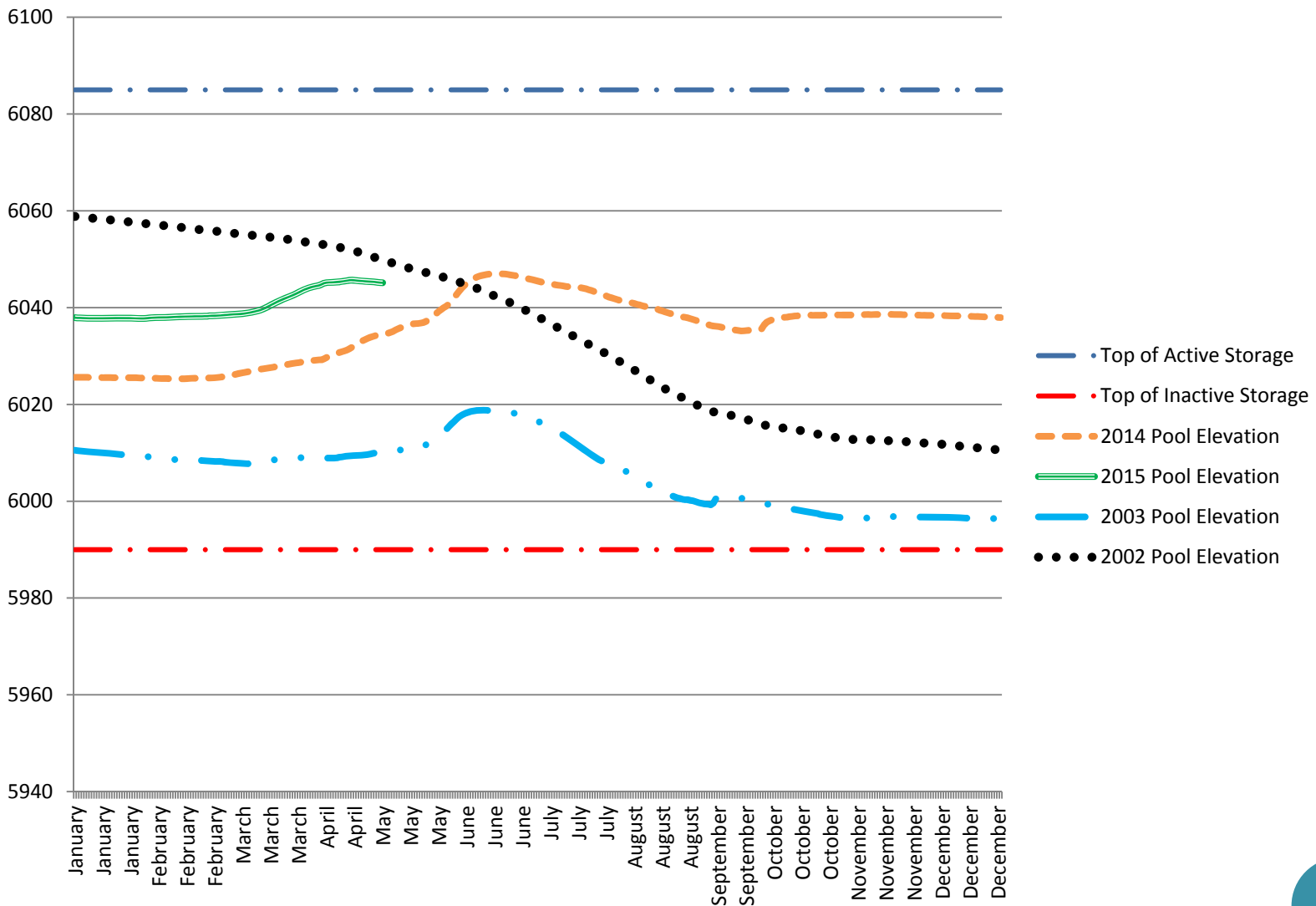
Animas – La Plata Project

Status: April 26, 2015

- Lake Nighthorse Pool Elevation: 6880.6 feet.
- Lake Nighthorse Storage: 112,998 acre-feet of live storage, which is 98% full.
- There was no pumping or release in April. Evaporation and seepage was calculated to be 281 acre-feet.
- Pumping is scheduled to top off Lake Nighthorse during the months of May and June at a rate of 33 cfs for 38 days.
- The observed flow for the Animas River at Durango during April was 34,000 acre-feet. The most probable flow forecast for May as of May 4th is 82,000 acre-feet.



NAVAJO RESERVOIR POOL ELEVATION



Navajo Reservoir's current water content as of May 2nd is 69% of capacity

Data Obtained from BOR Website

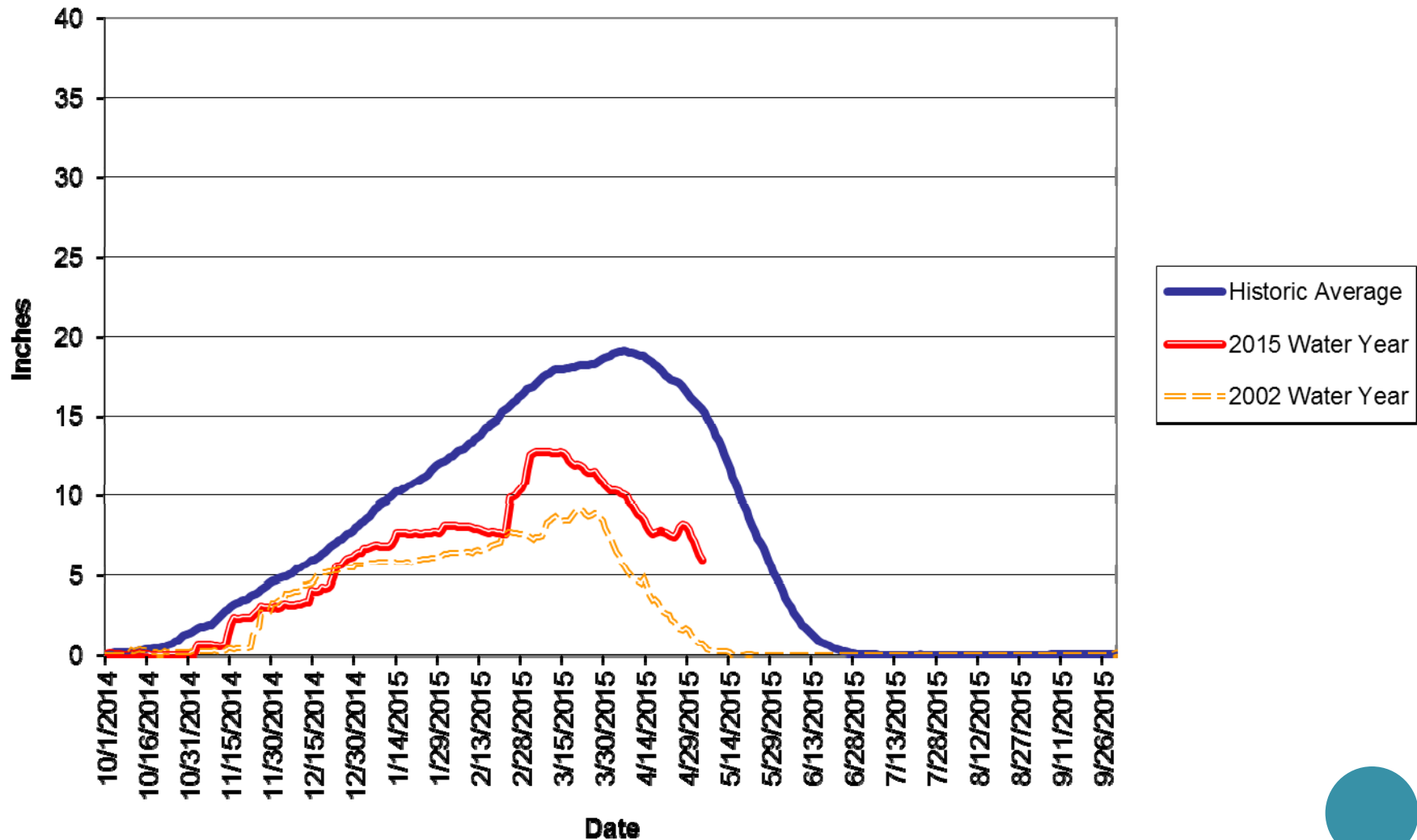
SEA SURFACE TEMPERATURE

- El Niño conditions are present.
- Positive equatorial sea surface temperature (SST) anomalies continue across most of the Pacific Ocean.
- There is an approximately 70% chance that El Niño conditions will continue through Northern Hemisphere summer 2015, and a greater than 60% chance it will last through autumn.



PRECIPITATION UPDATE

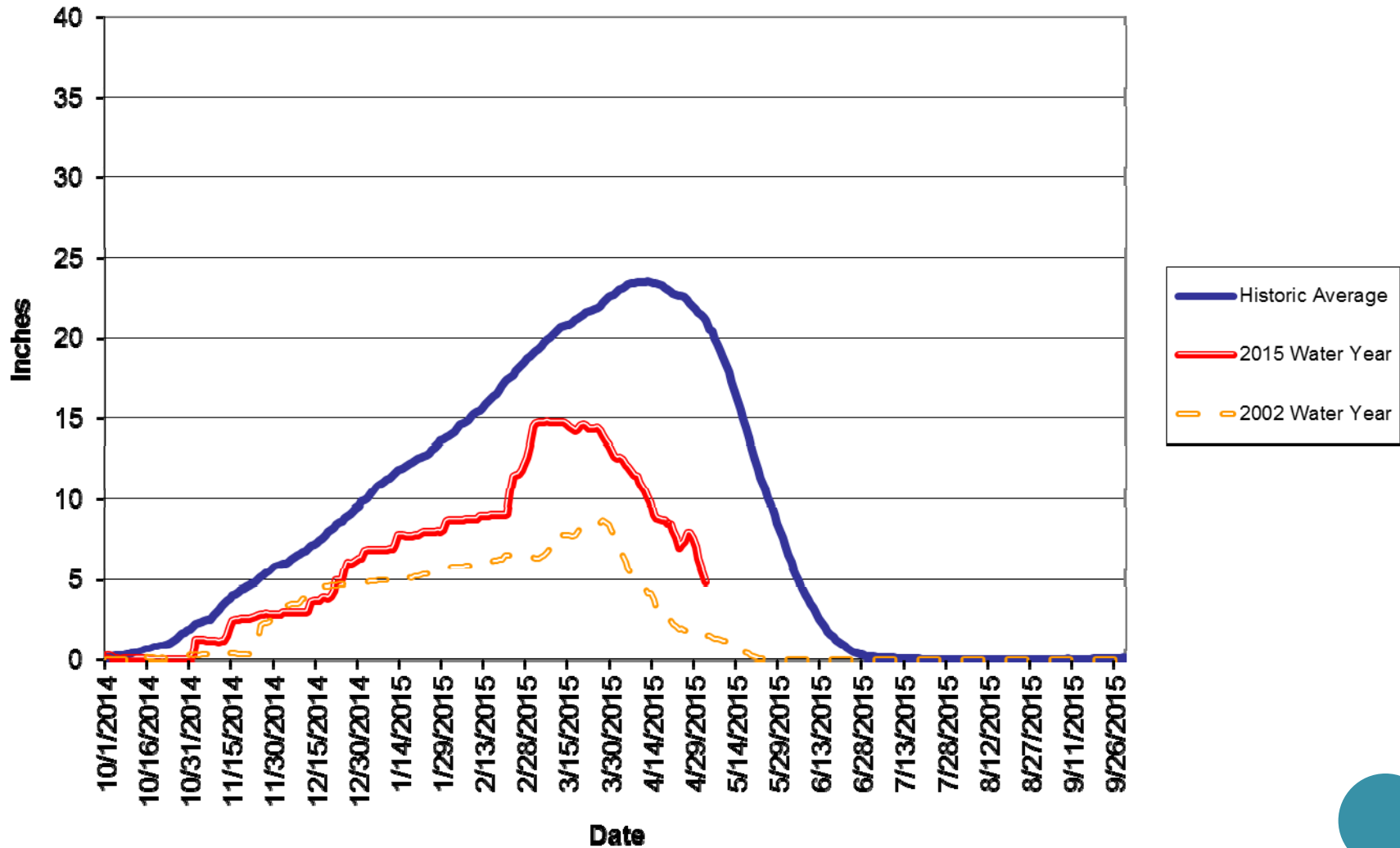
ANIMAS RIVER BASIN
SNOTEL SNOW WATER EQUIVALENT (WY 2015)



Snow Water Equivalent as of May 4, 2015 is 37% of average

PRECIPITATION UPDATE

SAN JUAN RIVER BASIN
SNOTEL SNOW WATER EQUIVALENT (WY 2015)

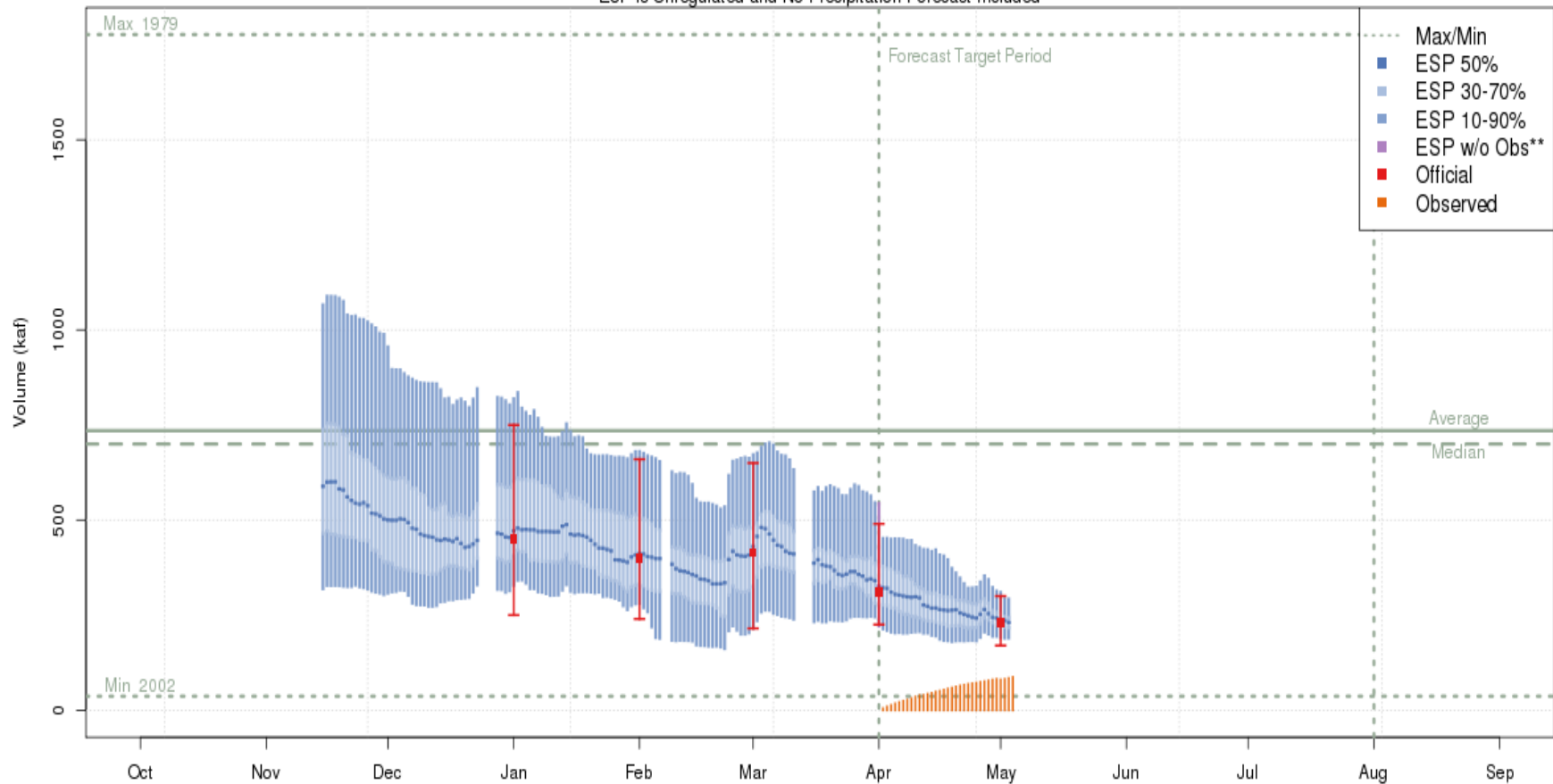


Snow Water Equivalent as of May 4, 2015 is 23% of average

RIVER FORECASTING

CORRELATION BETWEEN SNOW WATER EQUIVALENT AND EXPECTED RIVER FLOWS

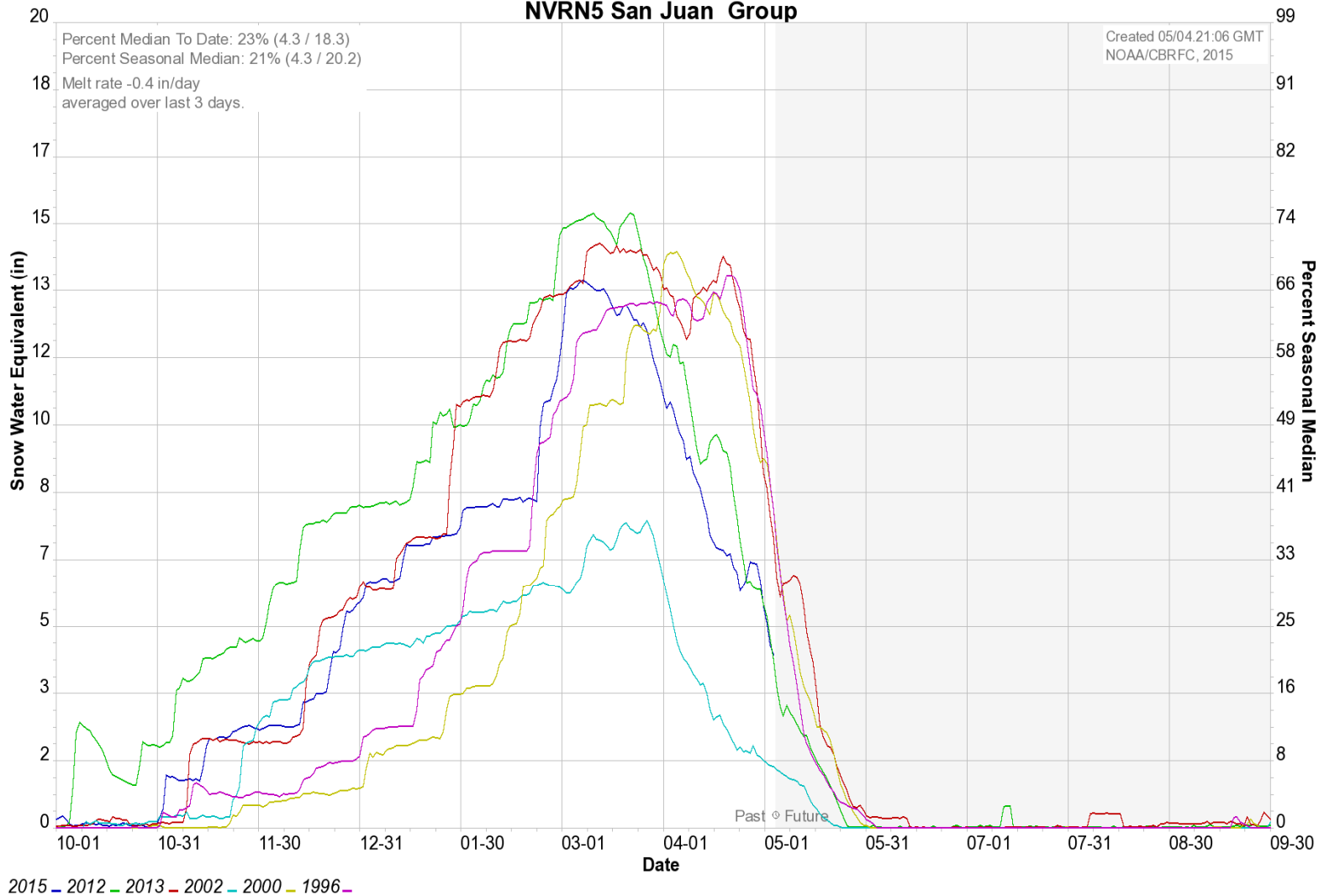
San Juan - Navajo Res- Archuleta- Nr (NVRN5)
2015-05-01 Apr-Jul Official 50% Forecast: 230 kaf (31% of average)
ESP is Unregulated and No Precipitation Forecast Included



The latest (2015-05-03) 50% ESP forecast is 231 kaf.
Plot Created 2015-05-04 13:19:18, NOAA / NWS / CBRFC
Forecasts in the forecast target period include observed values.

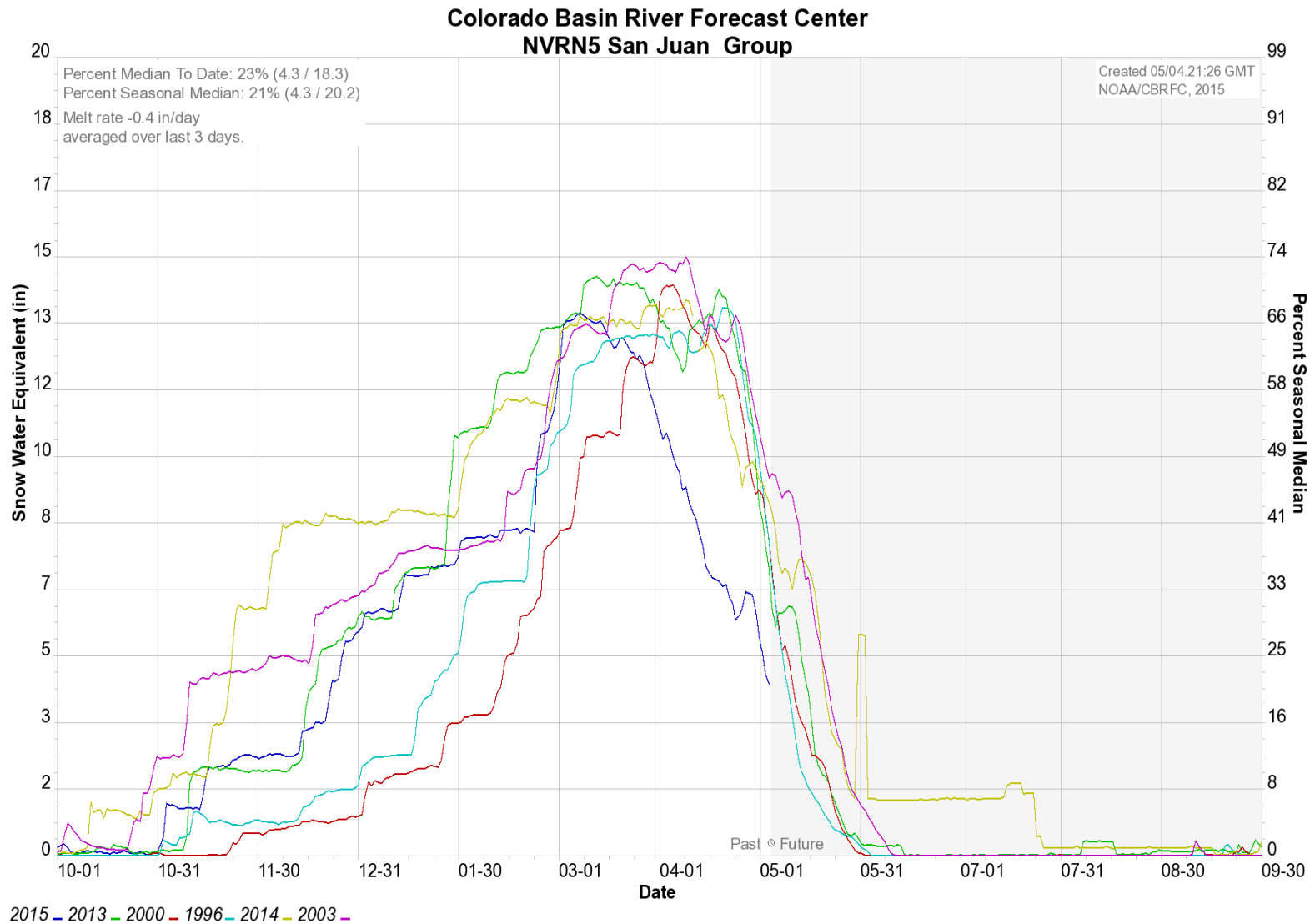
FIVE YEARS WITH MOST SIMILAR SWE VALUE AS OF MAY 4TH

Colorado Basin River Forecast Center
NVRN5 San Juan Group



Source: Colorado Basin River Forecast Center

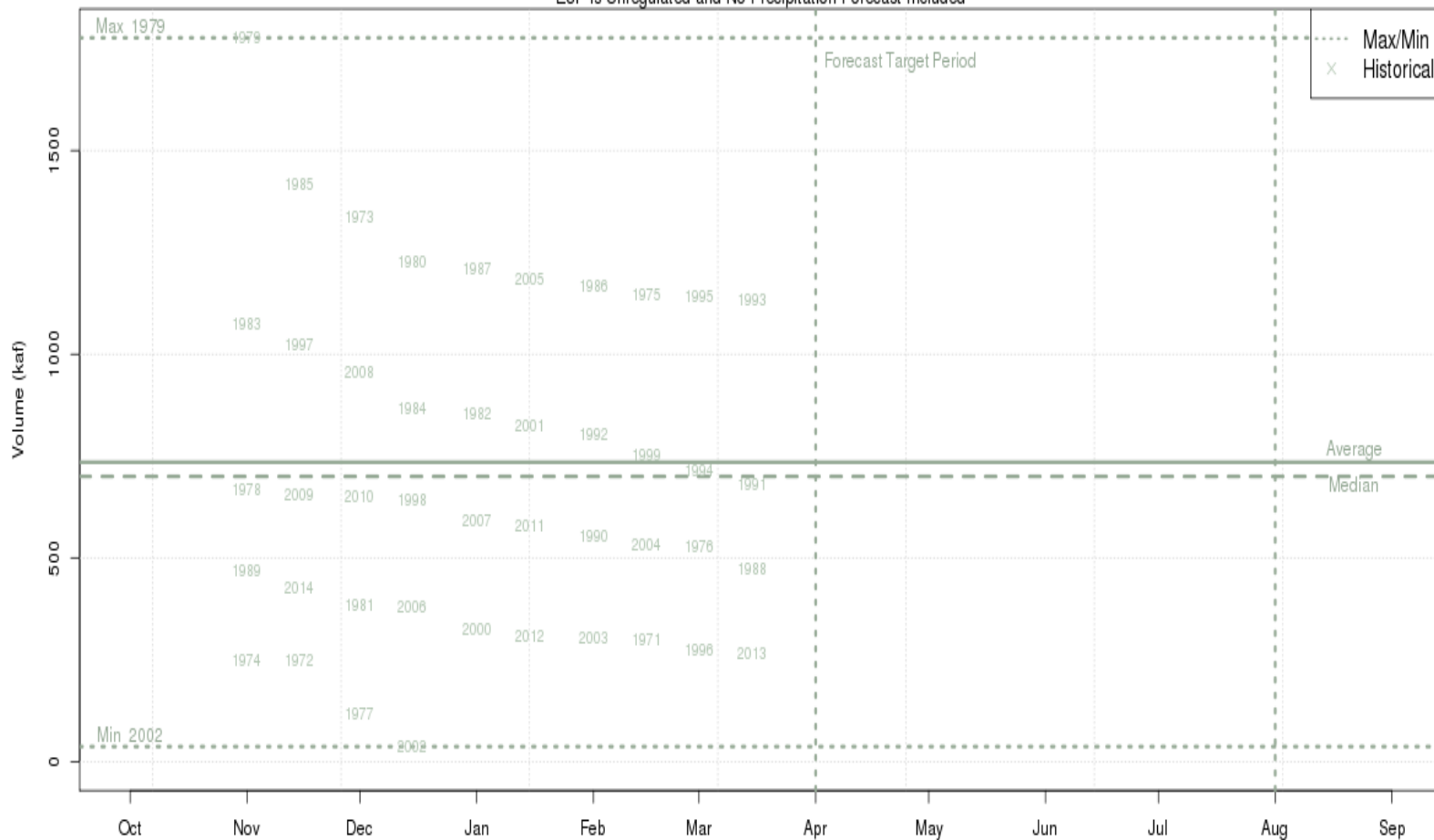
FIVE YEARS WITH MOST SIMILAR PEAK SWE VALUE FOR THE YEAR



Source: Colorado Basin River Forecast Center

YEARLY APRIL TO JULY NAVAJO RESERVOIR INFLOW

San Juan - Navajo Res- Archuleta- Nr (NVRN5)
 2015-05-01 Apr-Jul Official 50% Forecast: 230 kaf (31% of average)
 ESP is Unregulated and No Precipitation Forecast Included

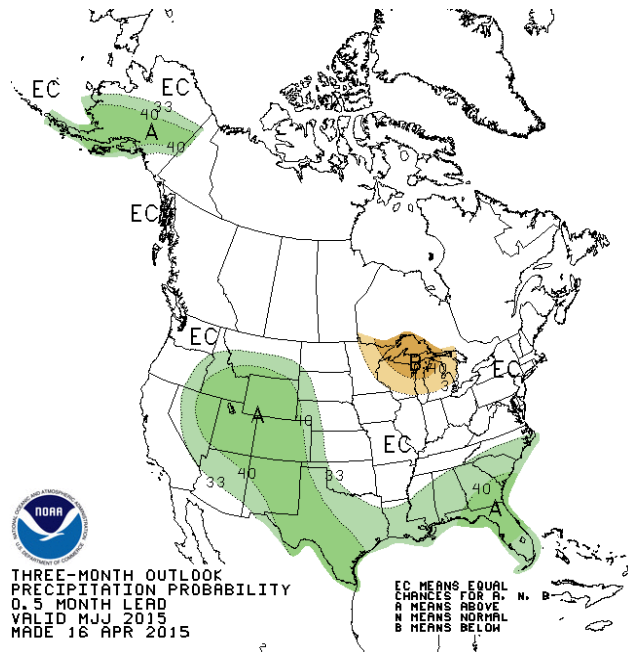


The latest (2015-04-01) 50% ESP forecast is 326 kaf.
 Plot Created 2015-05-04 14:41:20, NOAA / NWS / CBRFC
 **Purple ESP forecasts do not include observed and are not total runoff.

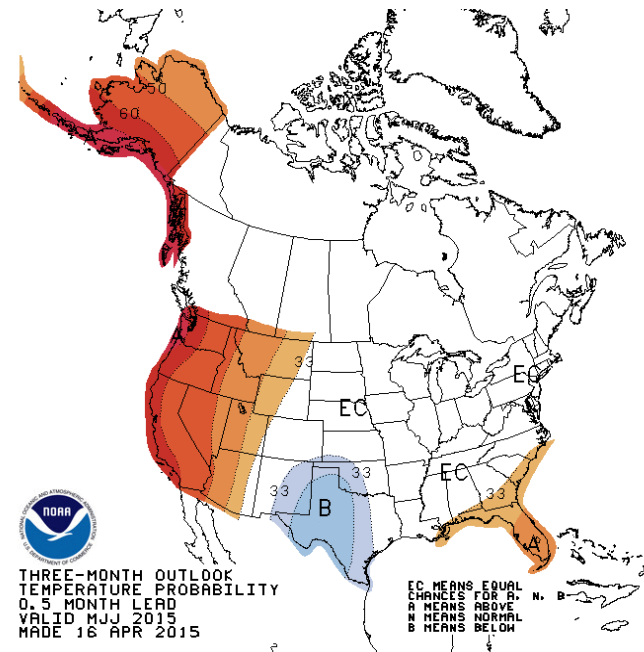


PRECIPITATION AND TEMPERATURE OUTLOOK

Precipitation May-Jun-Jul 2015



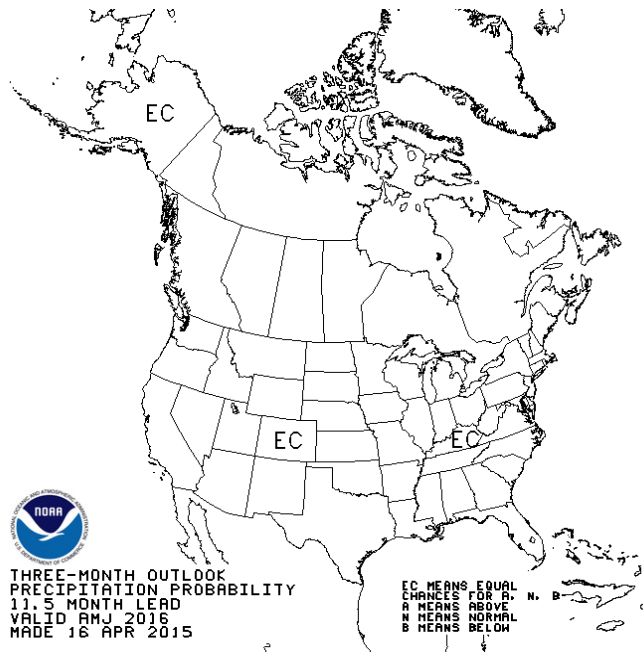
Temperature May-Jun-Jul 2015



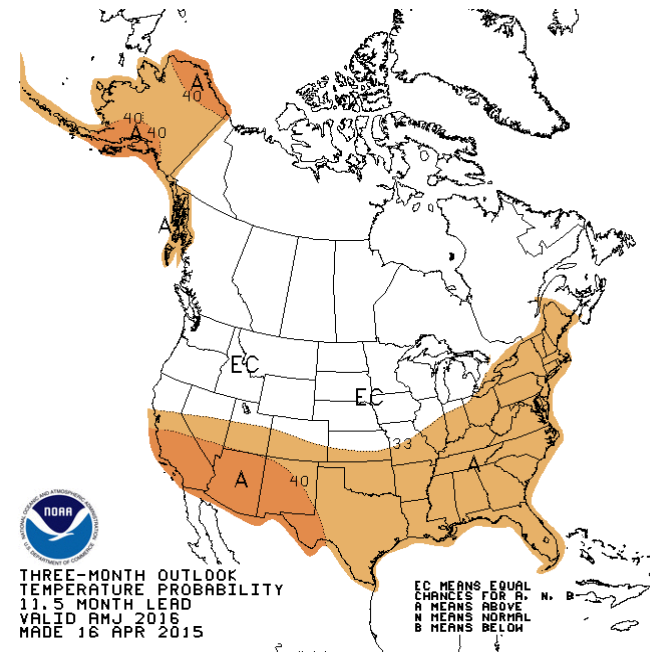
Precip	Temp	Probability anomaly as shown on map	Probability of occurrence for each Equal			Most likely category
			A	N	B	
Green shades	Red shades	40%-50%	73.3%-83.3%	23.3%-13.3%	3.3%	"Above"
		30%-40%	63.3%-73.3%	33.3%-23.3%	3.3%	"Above"
		20%-30%	53.3%-63.3%	33.3%	13.3%-3.3%	"Above"
		10%-20%	43.3%-53.3%	33.3%	23.3%-13.3%	"Above"
		5%-10%	38.3-43.3%	33.3%	23.3%-28.3%	"Above"
0%-5%	33.3-38.3%	33.3%	33.3%-28.3%	"Above"		
Grey	Grey	0%-5%	30.8%-33.3%	33.3%-38.3%	30.8%-33.3%	"Near Normal"
		5%-10%	28.3%-30.8%	38.3%-43.3%	28.3%-30.8%	"Near Normal"
Orange/Brown shades	Blue shades	0%-5%	33.3%-28.3%	33.3%	33.3%-38.3%	"Below"
		5%-10%	28.3%-23.3%	33.3%	38.3%-43.3%	"Below"
		10%-20%	23.3%-13.3%	33.3%	43.3%-53.3%	"Below"
		20%-30%	13.3%-3.3%	33.3%	53.3%-63.3%	"Below"
		30%-40%	3.3%	33.3%-23.3%	63.3%-73.3%	"Below"
40%-50%	3.3%	23.3%-13.3%	73.3%-83.3%	"Below"		
White	White	0%	33.3%	33.3%	33.3%	"Equal Chances"

PRECIPITATION AND TEMPERATURE OUTLOOK

Precipitation Apr-May-Jun 2016



Temperature Apr-May-Jun 2016



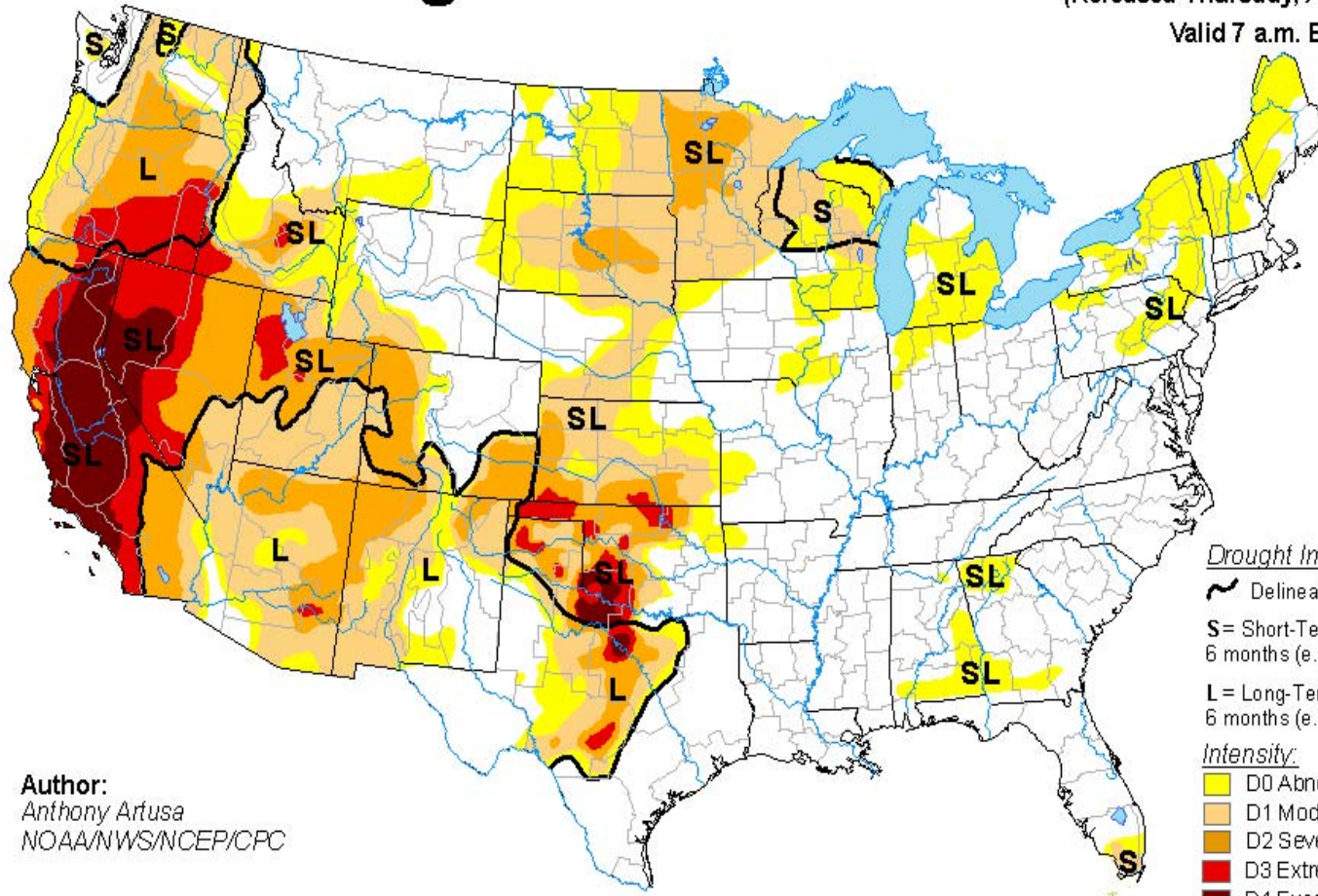
Precip	Temp	Probability anomaly as shown on map	Probability of occurrence for each Equal			Most likely category
			A	N	B	
Green shades	Red shades	40%-50%	73.3%-83.3%	23.3%-13.3%	3.3%	"Above"
		30%-40%	63.3%-73.3%	33.3%-23.3%	3.3%	"Above"
		20%-30%	53.3%-63.3%	33.3%	13.3%-3.3%	"Above"
		10%-20%	43.3%-53.3%	33.3%	23.3%-13.3%	"Above"
		5%-10%	38.3%-43.3%	33.3%	23.3%-28.3%	"Above"
0%-5%	33.3%-38.3%	33.3%	33.3%-28.3%	"Above"		
Grey shades	Grey shades	0%-5%	30.8%-33.3%	33.3%-38.3%	30.8%-33.3%	"Near Normal"
		5%-10%	28.3%-30.8%	38.3%-43.3%	28.3%-30.8%	"Near Normal"
Orange shades	Blue shades	0%-5%	33.3%-28.3%	33.3%	33.3%-38.3%	"Below"
		5%-10%	28.3%-23.3%	33.3%	38.3%-43.3%	"Below"
		10%-20%	23.3%-13.3%	33.3%	43.3%-53.3%	"Below"
		20%-30%	13.3%-3.3%	33.3%	53.3%-63.3%	"Below"
		30%-40%	3.3%	33.3%-23.3%	63.3%-73.3%	"Below"
40%-50%	3.3%	23.3%-13.3%	73.3%-83.3%	"Below"		
White	White	0%	33.3%	33.3%	33.3%	"Equal Chances"

U.S. Drought Monitor

April 28, 2015

(Released Thursday, Apr. 30, 2015)

Valid 7 a.m. EST



Author:
Anthony Artusa
NOAA/NWS/NCEP/CPC

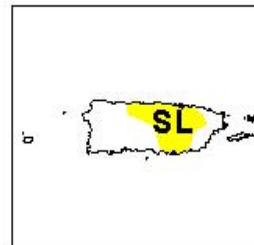
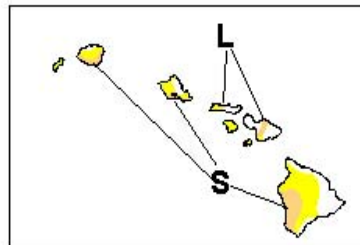
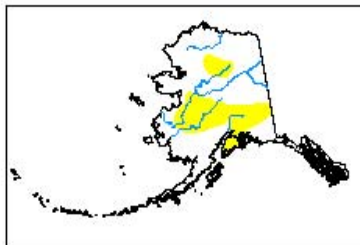
Drought Impact Types:

- ~ Delineates dominant impacts
- S= Short-Term, typically less than 6 months (e.g. agriculture, grasslands)
- L= Long-Term, typically greater than 6 months (e.g. hydrology, ecology)

Intensity:

- Yellow: D0 Abnormally Dry
- Light Orange: D1 Moderate Drought
- Orange: D2 Severe Drought
- Red: D3 Extreme Drought
- Dark Red: D4 Exceptional Drought

The Drought Monitor focuses on broad-scale conditions. Local conditions may vary. See accompanying text summary for forecast statements.



<http://droughtmonitor.unl.edu/>