

The logo for the San Juan Water Commission (SJWC) is located in the top left corner. It consists of the letters "SJWC" in a bold, blue, sans-serif font, enclosed within a rounded rectangular border. Below the letters, the full name "San Juan Water Commission" is written in a smaller, blue, sans-serif font.

SJWC

San Juan Water Commission

A decorative graphic on the left side of the slide features several teal-colored circles of varying sizes. The largest circle is at the top left, with several smaller circles of different sizes arranged below and to its right, creating a cluster of bubbles or water droplets.

Water Resource Update

June 3, 2015

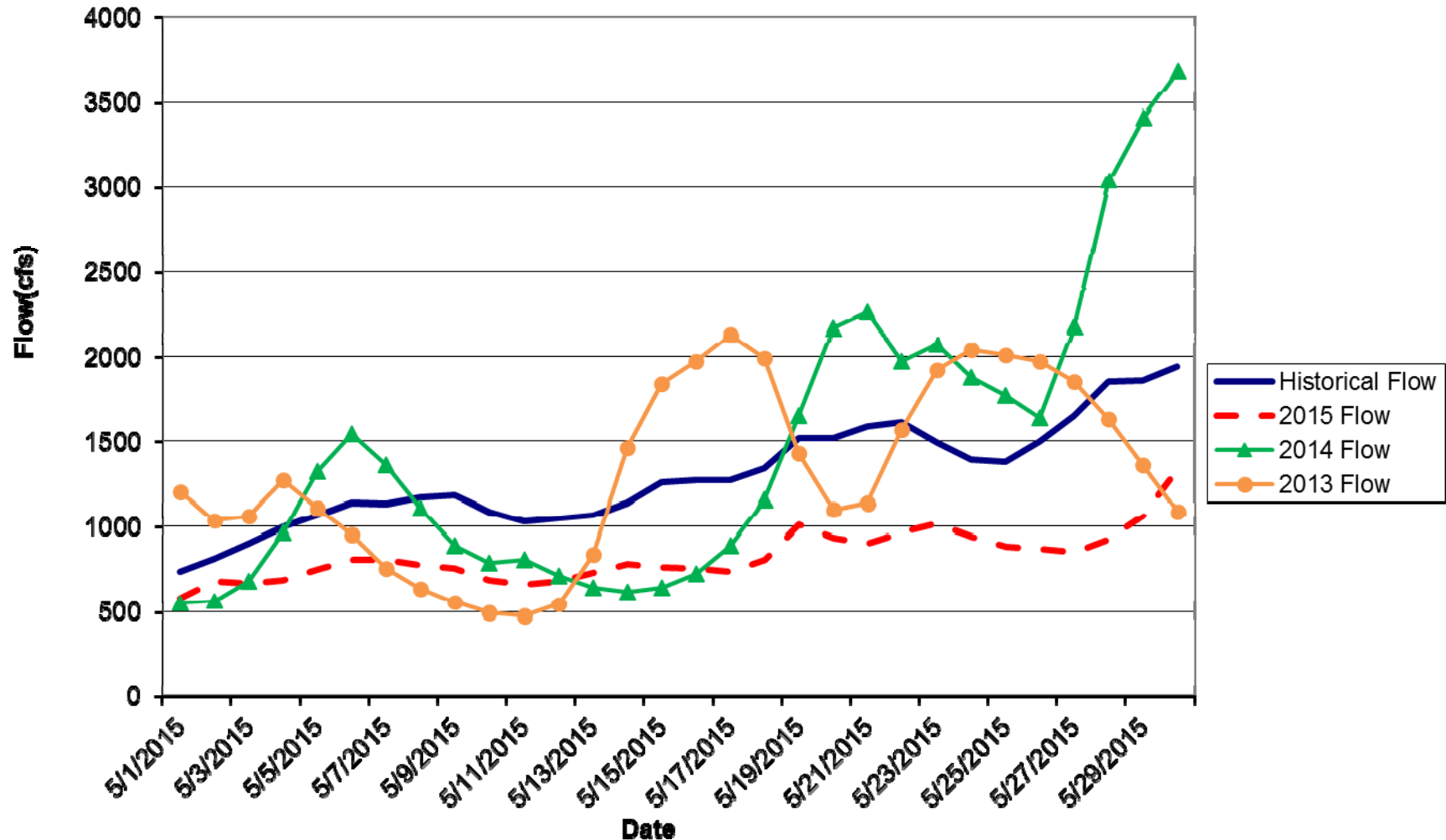


-
- Current Stream Conditions
 - Animas-La Plata Status
 - Current Navajo Reservoir Status
 - Current Snow Water Equivalent Status (SNOTEL)
 - Current Climate Conditions and Outlook



USGS STREAM FLOW DATA

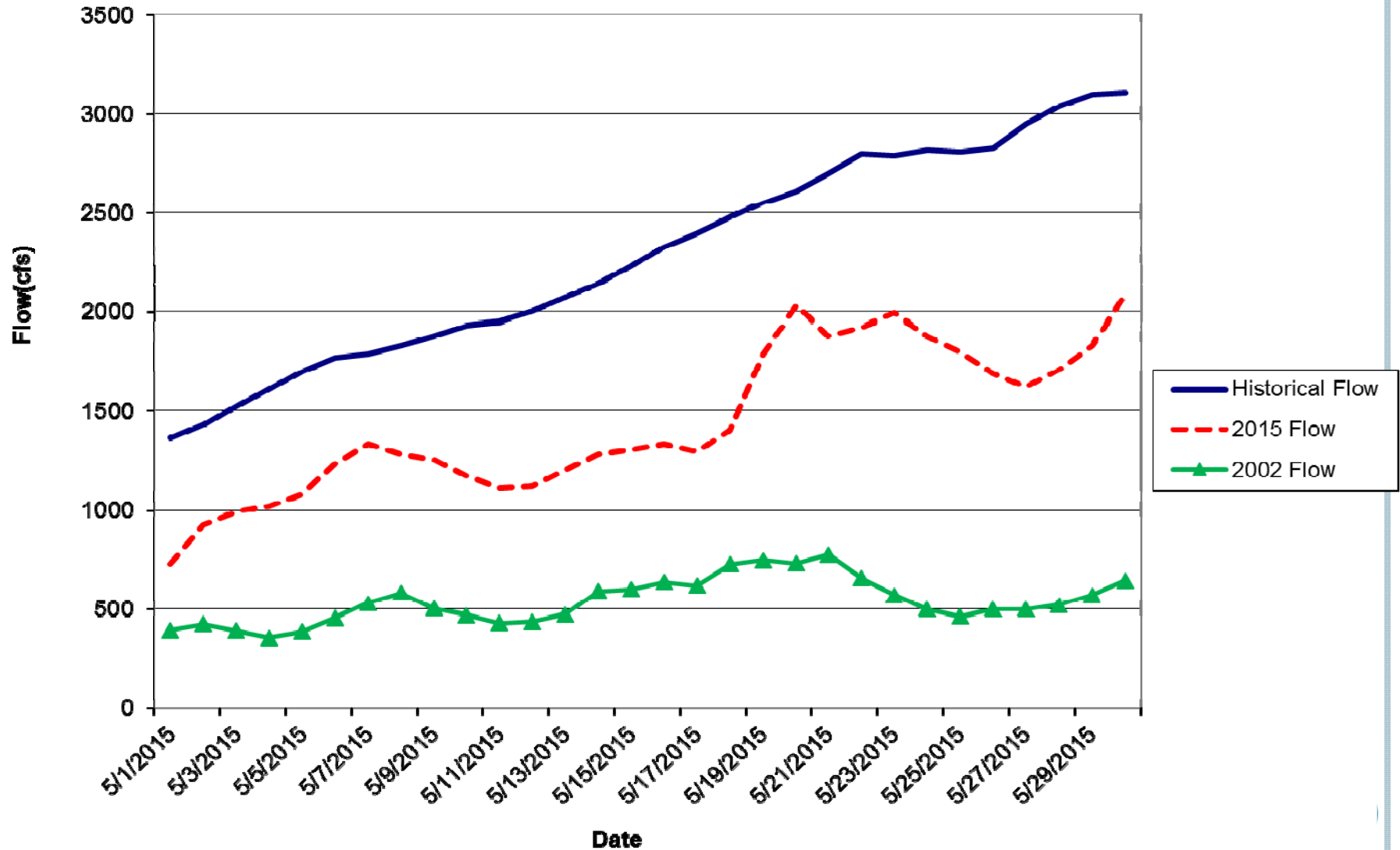
ANIMAS RIVER AT TALL TIMBER "TEFT" (09359500)



Stream Flow Data for the month of May is 65% of average.

USGS STREAM FLOW DATA

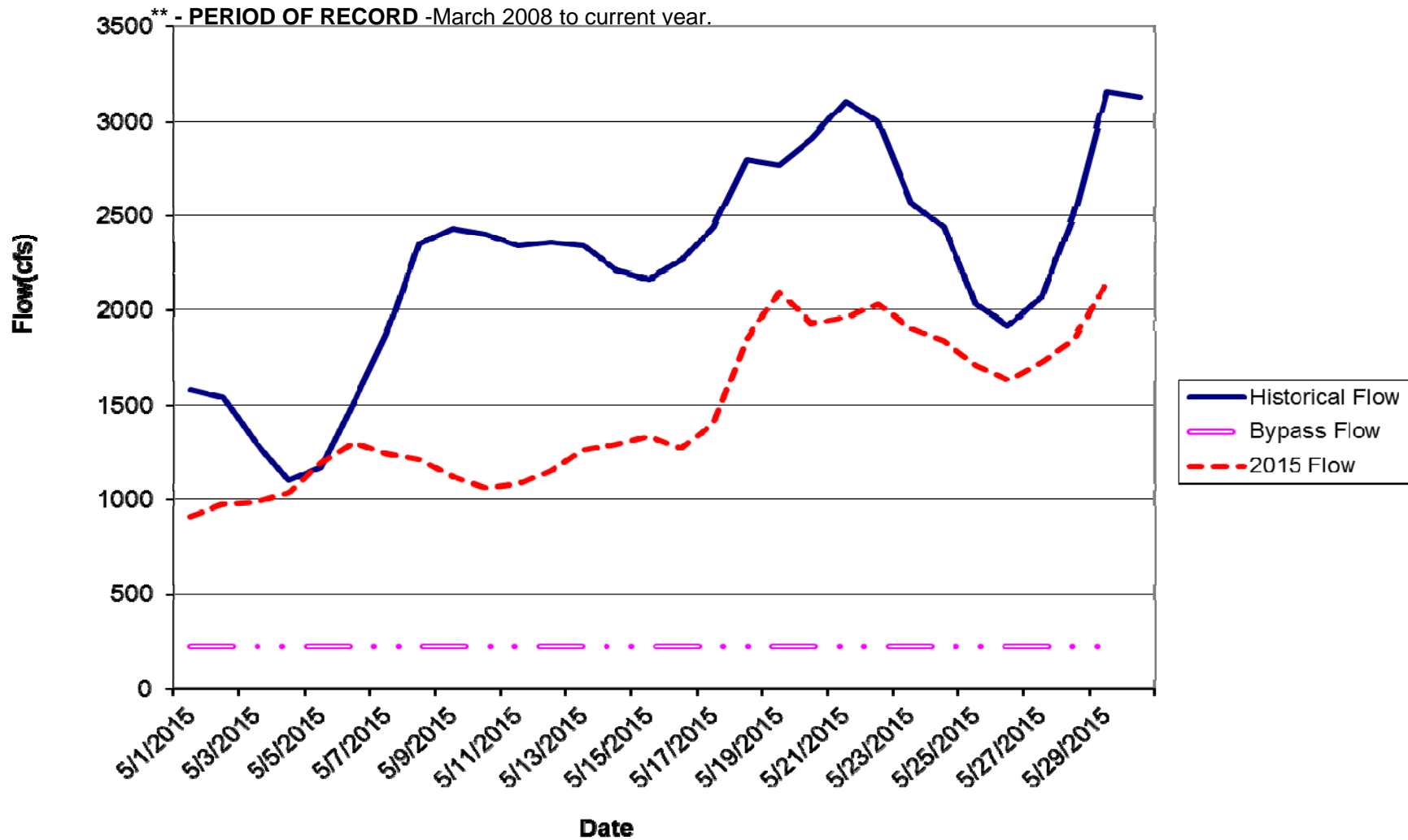
ANIMAS RIVER AT DURANGO (09359500)



Stream Flow Data for the month of May is 64% of average

USGS STREAM FLOW DATA

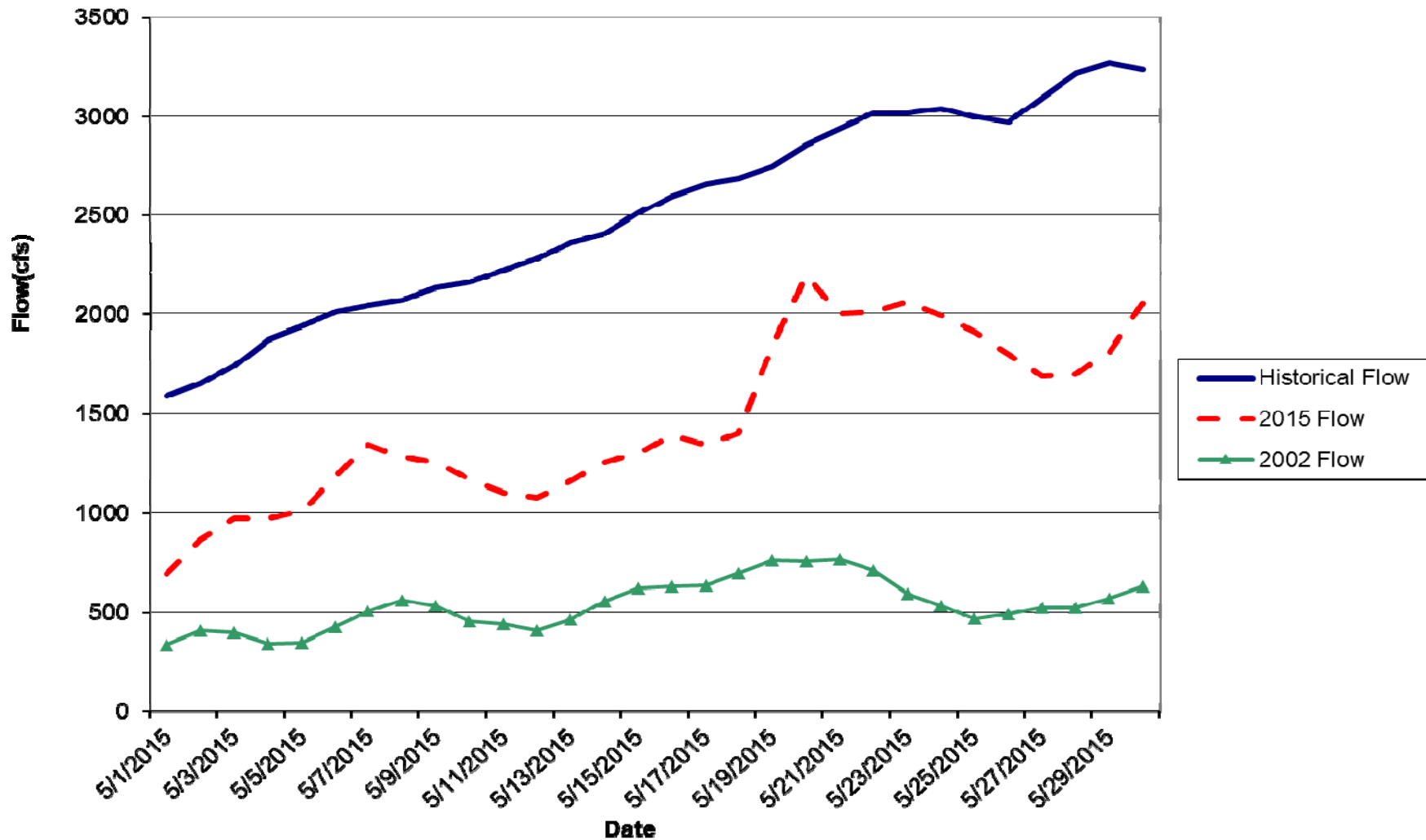
ANIMAS RIVER BELOW DURANGO PUMPING PLANT (09362520)



Stream Flow Data for the month of May is 65% of average

USGS STREAM FLOW DATA

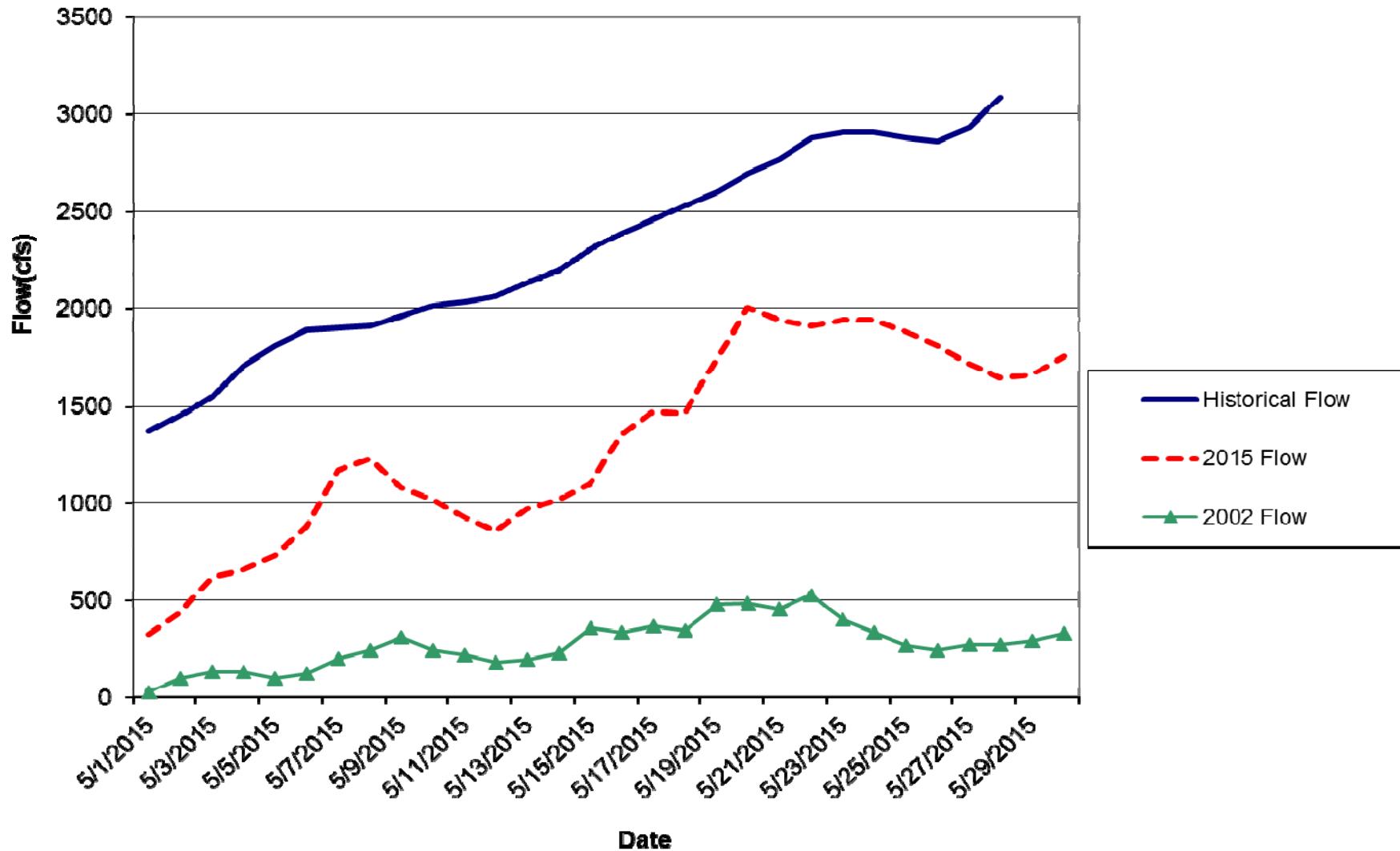
ANIMAS RIVER NEAR CEDAR HILL (09363500)



Stream Flow Data for the month of May is 59% of average

USGS STREAM FLOW DATA

ANIMAS RIVER AT FARMINGTON (09364500)



Stream Flow Data for the month of May is 56% of average

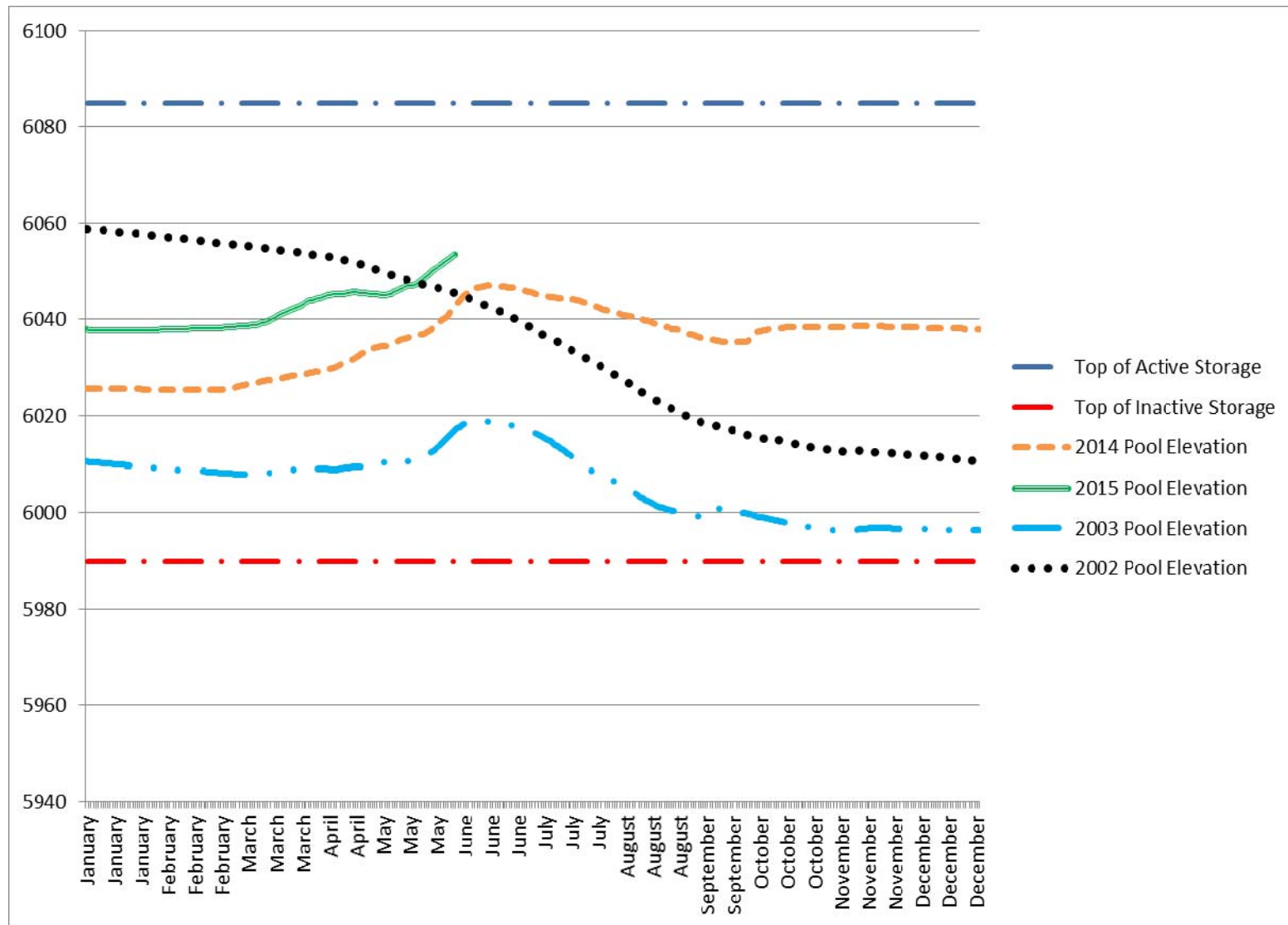
Animas – La Plata Project

Status: May 19, 2015

- Lake Nighthorse Pool Elevation: 6881.51 feet.
- Lake Nighthorse Storage: 114,346 acre-feet of live storage, which is 99% full. The reservoir is only 729 acre-ft short of full-pool
- The pumping plant began pumping May 4th at a rate of 33 cfs.
- Pumping is scheduled to top off Lake Nighthorse during the months of May and June at a rate of 33 cfs for 38 days.
- The observed flow for the Animas River at Durango during May was 83,470 acre-feet. The most probable flow forecast for June as of May 19th is 115,000 acre-feet.



NAVAJO RESERVOIR POOL ELEVATION



Navajo Reservoir's current water content as of May 31st is 75% of capacity

Data Obtained from BOR Website

SEA SURFACE TEMPERATURE

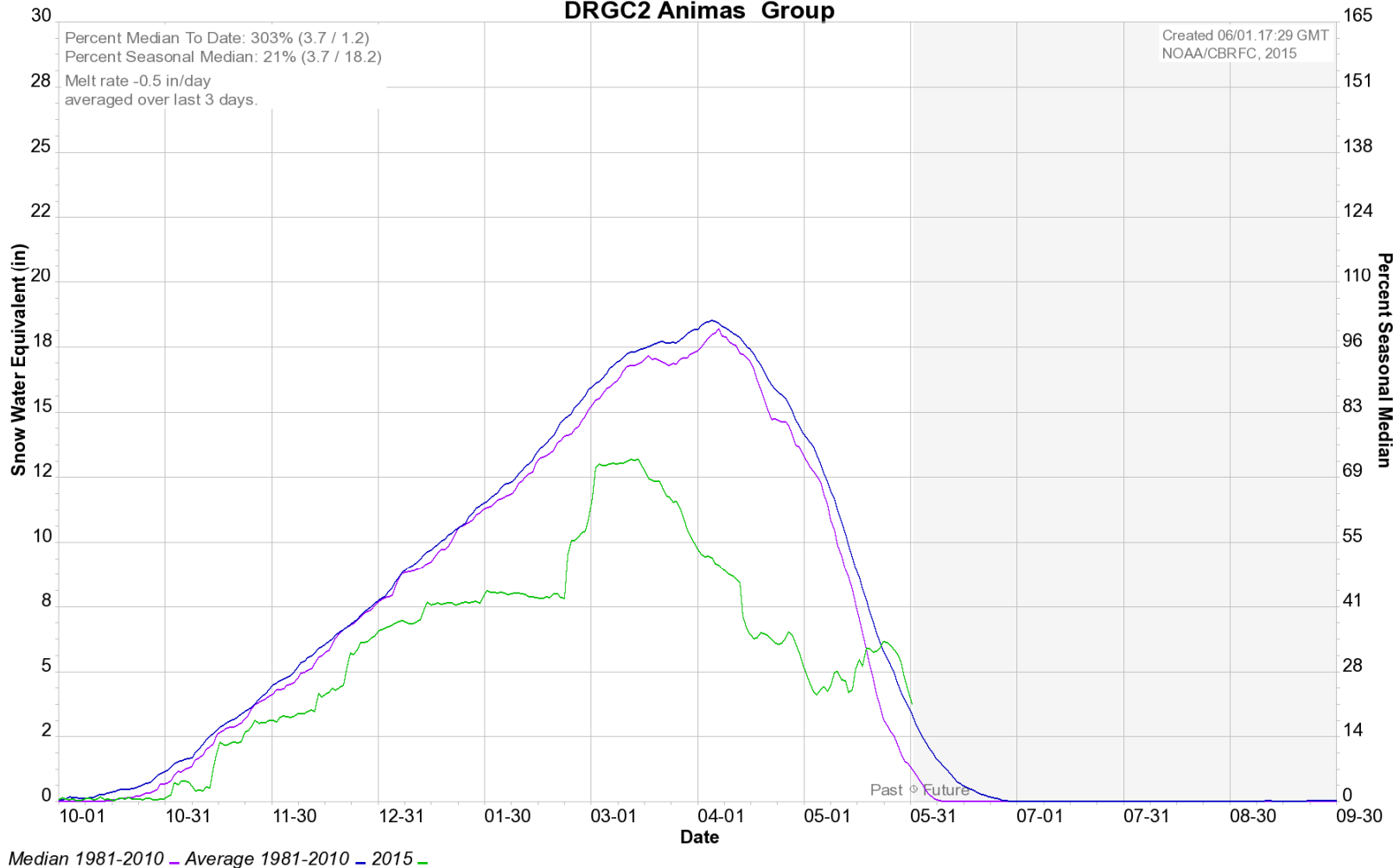
- El Niño conditions are present.
- Positive equatorial sea surface temperature (SST) anomalies continue across most of the Pacific Ocean.
- There is an approximately 90% chance that El Niño conditions will continue through Northern Hemisphere summer 2015, and a greater than 80% chance it will last through 2015.



PRECIPITATION UPDATE

ANIMAS RIVER BASIN SNOTEL SNOW WATER EQUIVALENT (WY 2015)

Colorado Basin River Forecast Center
DRGC2 Animas Group

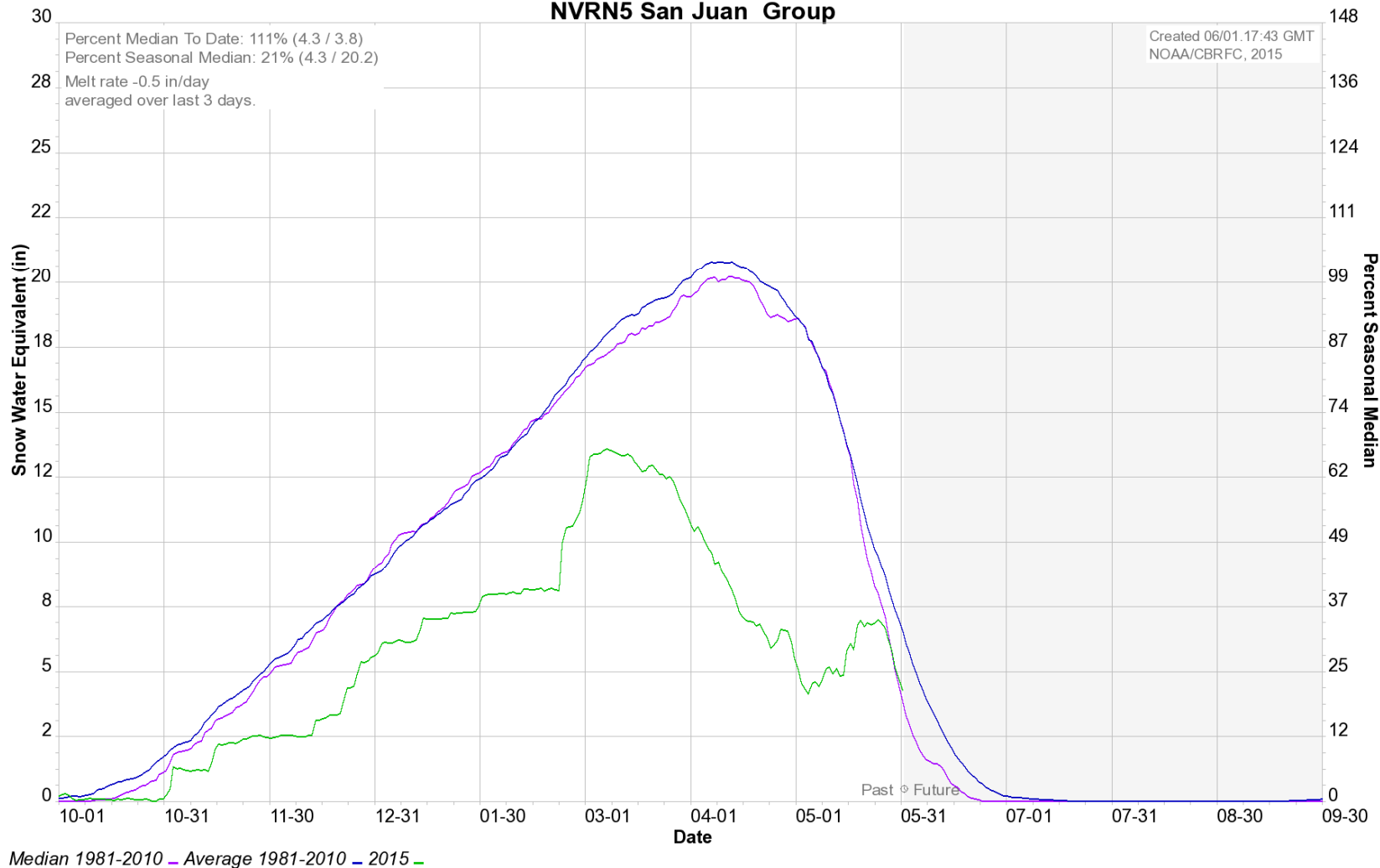


Snow Water Equivalent as of June 1, 2015 is 109% of average for the date

PRECIPITATION UPDATE

SAN JUAN RIVER BASIN SNOTEL SNOW WATER EQUIVALENT (WY 2015)

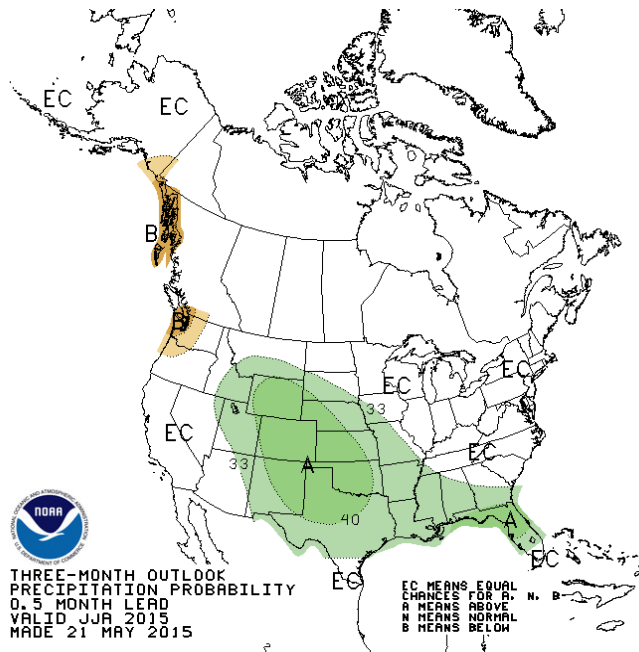
Colorado Basin River Forecast Center
NVRN5 San Juan Group



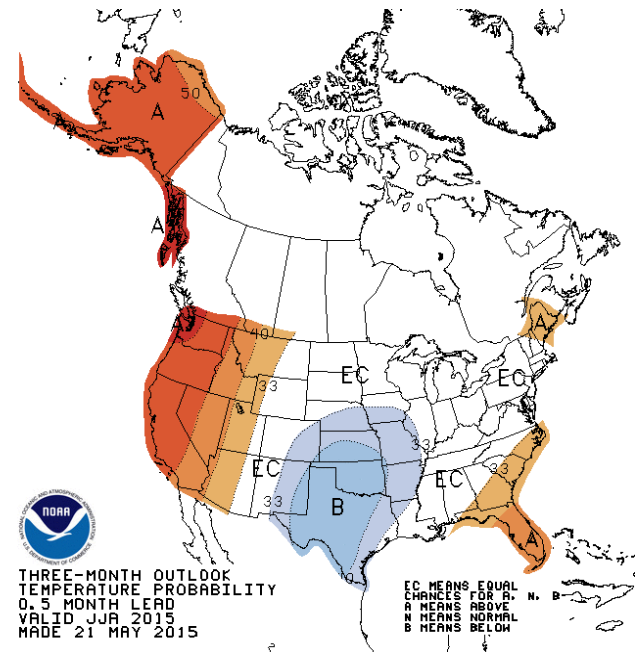
Snow Water Equivalent as of June 1, 2015 is 66% of average for the date

PRECIPITATION AND TEMPERATURE OUTLOOK

Precipitation Jun-Jul-Aug 2015



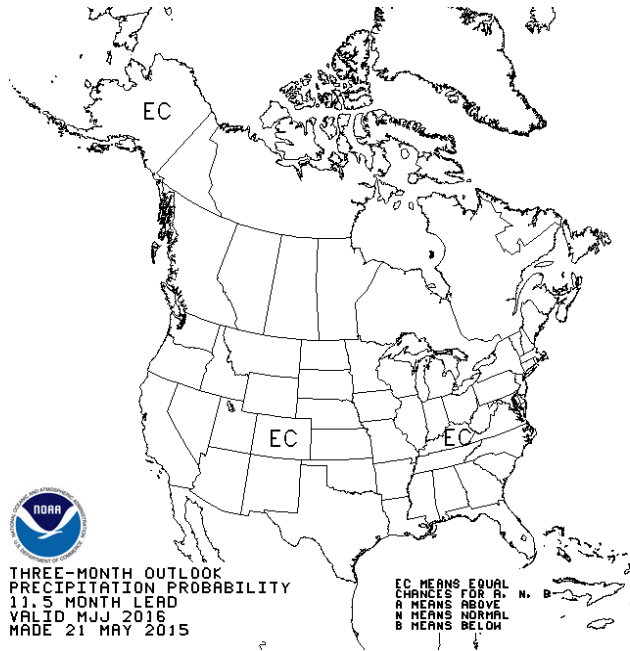
Temperature Jun-Jul-Aug 2015



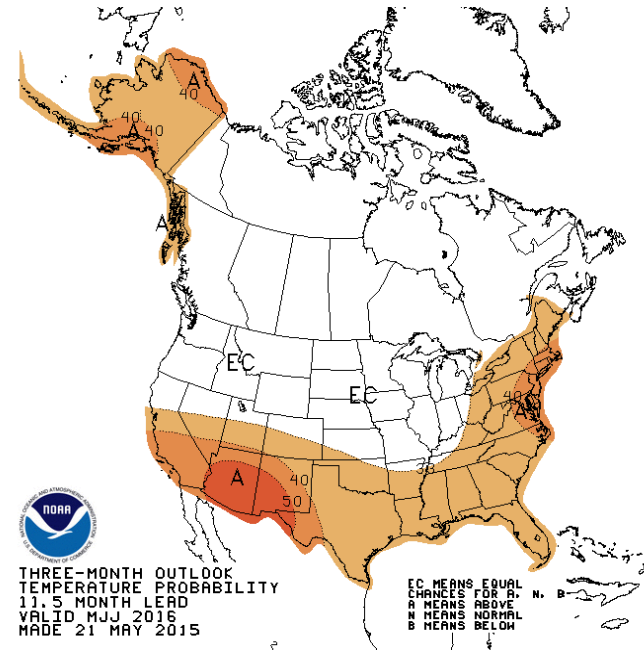
Precip	Temp	Probability anomaly as shown on map	Probability of occurrence for each Equal			Most likely category
			A	N	B	
Precipitation (Green shades)	Temperature (Red shades)	40%-50%	73.3%-83.3%	23.3%-13.3%	3.3%	"Above"
		30%-40%	63.3%-73.3%	33.3%-23.3%	3.3%	"Above"
		20%-30%	53.3%-63.3%	33.3%	13.3%-3.3%	"Above"
		10%-20%	43.3%-53.3%	33.3%	23.3%-13.3%	"Above"
		5%-10%	38.3%-43.3%	33.3%	23.3%-28.3%	"Above"
Precipitation (Orange shades)	Temperature (Blue shades)	0%-5%	33.3%-38.3%	33.3%	33.3%-28.3%	"Above"
		0%-5%	30.8%-33.3%	33.3%-38.3%	30.8%-33.3%	"Near Normal"
		5%-10%	28.3%-30.8%	38.3%-43.3%	28.3%-30.8%	"Near Normal"
		0%-5%	33.3%-28.3%	33.3%	33.3%-38.3%	"Below"
		5%-10%	28.3%-23.3%	33.3%	38.3%-43.3%	"Below"
Precipitation (Light Blue shades)	Temperature (Dark Blue shades)	10%-20%	23.3%-13.3%	33.3%	43.3%-53.3%	"Below"
		20%-30%	13.3%-3.3%	33.3%	53.3%-63.3%	"Below"
		30%-40%	3.3%	33.3%-23.3%	63.3%-73.3%	"Below"
		40%-50%	3.3%	23.3%-13.3%	73.3%-83.3%	"Below"
		0%	33.3%	33.3%	33.3%	"Equal Chances"

PRECIPITATION AND TEMPERATURE OUTLOOK

Precipitation May-Jun-Jul 2016



Temperature May-Jun-Jul 2016



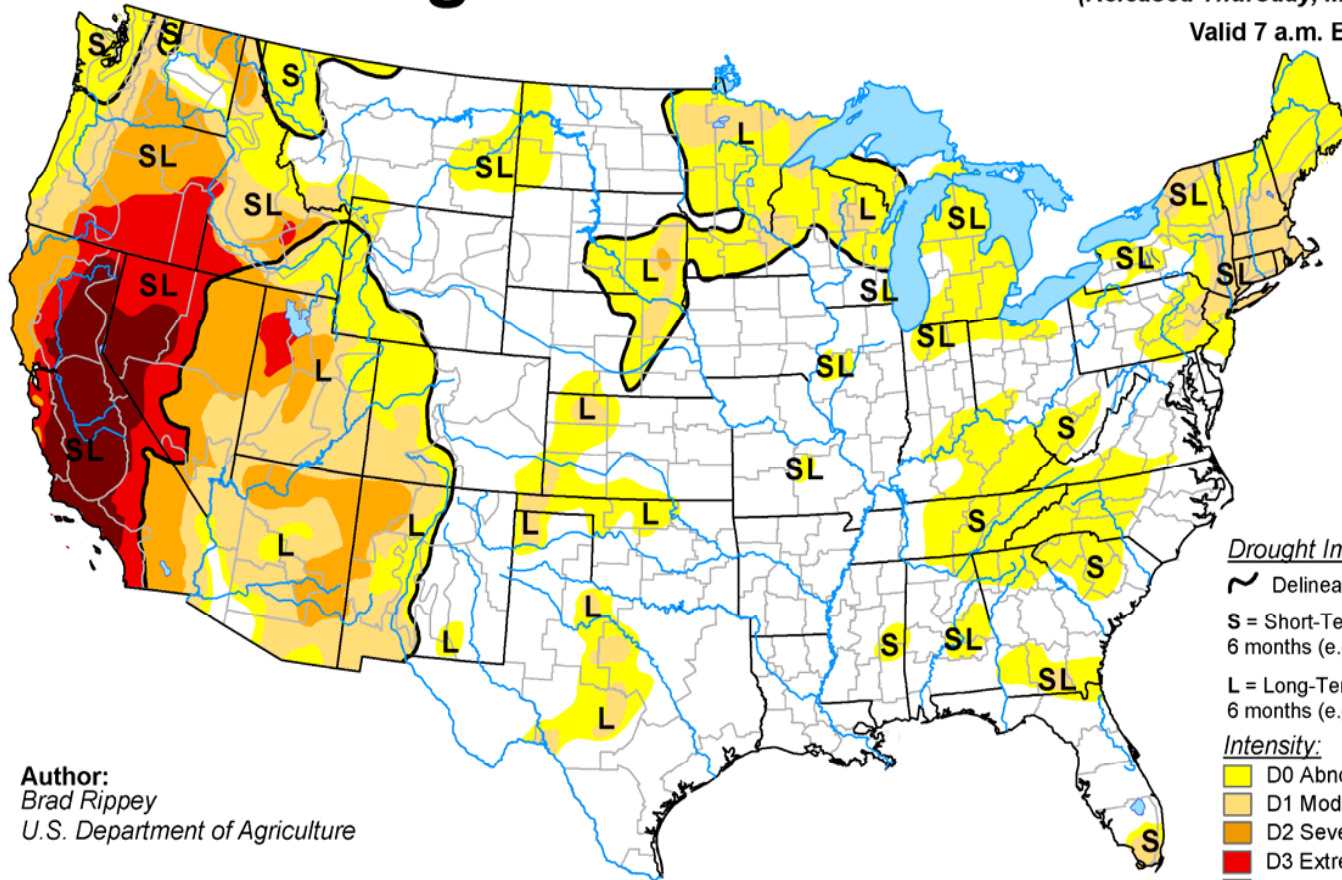
Precip	Temp	Probability anomaly as shown on map	Probability of occurrence for each Equal			Most likely category
			A	N	B	
		40%-50%	73.3%-83.3%	23.3%-13.3%	3.3%	"Above"
		30%-40%	63.3%-73.3%	33.3%-23.3%	3.3%	"Above"
		20%-30%	53.3%-63.3%	33.3%	13.3%-3.3%	"Above"
		10%-20%	43.3%-53.3%	33.3%	23.3%-13.3%	"Above"
		5%-10%	38.3%-43.3%	33.3%	23.3%-28.3%	"Above"
		0%-5%	33.3%-38.3%	33.3%	33.3%-28.3%	"Above"
		0%-5%	30.8%-33.3%	33.3%-38.3%	30.8%-33.3%	"Near Normal"
		5%-10%	28.3%-30.8%	38.3%-43.3%	28.3%-30.8%	"Near Normal"
		0%-5%	33.3%-28.3%	33.3%	33.3%-38.3%	"Below"
		5%-10%	28.3%-23.3%	33.3%	38.3%-43.3%	"Below"
		10%-20%	23.3%-13.3%	33.3%	43.3%-53.3%	"Below"
		20%-30%	13.3%-3.3%	33.3%	53.3%-63.3%	"Below"
		30%-40%	3.3%	33.3%-23.3%	63.3%-73.3%	"Below"
		40%-50%	3.3%	23.3%-13.3%	73.3%-83.3%	"Below"
		0%	33.3%	33.3%	33.3%	"Equal Chances"

U.S. Drought Monitor

May 26, 2015

(Released Thursday, May. 28, 2015)

Valid 7 a.m. EST



Author:
Brad Rippey
U.S. Department of Agriculture

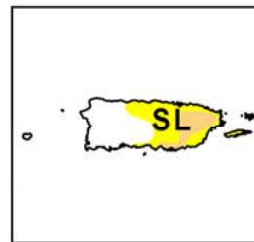
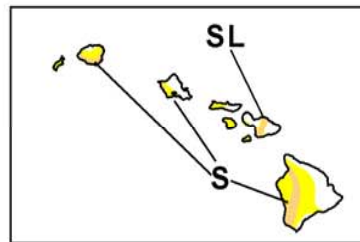
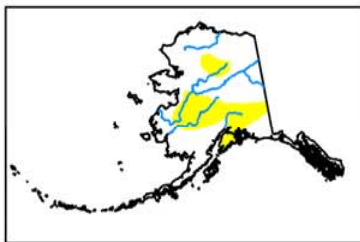
Drought Impact Types:

- ~ Delineates dominant impacts
- S = Short-Term, typically less than 6 months (e.g. agriculture, grasslands)
- L = Long-Term, typically greater than 6 months (e.g. hydrology, ecology)

Intensity:

- D0 Abnormally Dry
- D1 Moderate Drought
- D2 Severe Drought
- D3 Extreme Drought
- D4 Exceptional Drought

The Drought Monitor focuses on broad-scale conditions. Local conditions may vary. See accompanying text summary for forecast statements.



<http://droughtmonitor.unl.edu/>