

The logo for the San Juan Water Commission (SJWC) is located in the top left corner. It consists of the letters "SJWC" in a bold, dark blue, sans-serif font, enclosed within a rounded rectangular border. Below the letters, the full name "San Juan Water Commission" is written in a smaller, lighter blue font.

SJWC

San Juan Water Commission

A decorative vertical bar on the left side of the slide features a light blue background with a fine grid pattern. To the right of this bar, several teal-colored circles of varying sizes are arranged in a cluster, resembling bubbles or water droplets.

Water Resource Update

July 1, 2015

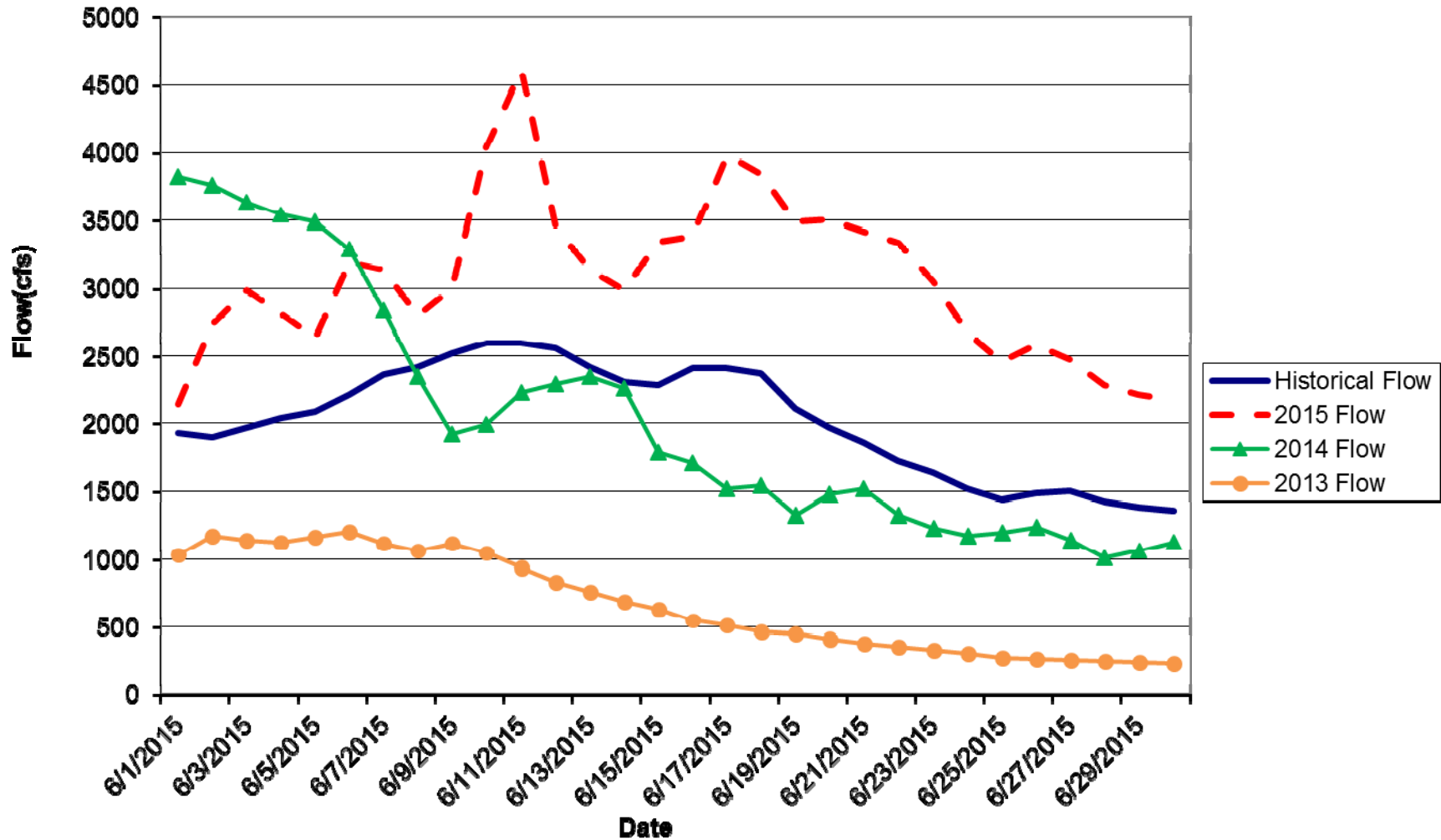


-
- Current Stream Conditions
 - Animas-La Plata Status
 - Current Navajo Reservoir Status
 - Current Snow Water Equivalent Status (SNOTEL)
 - Current Climate Conditions and Outlook



USGS STREAM FLOW DATA

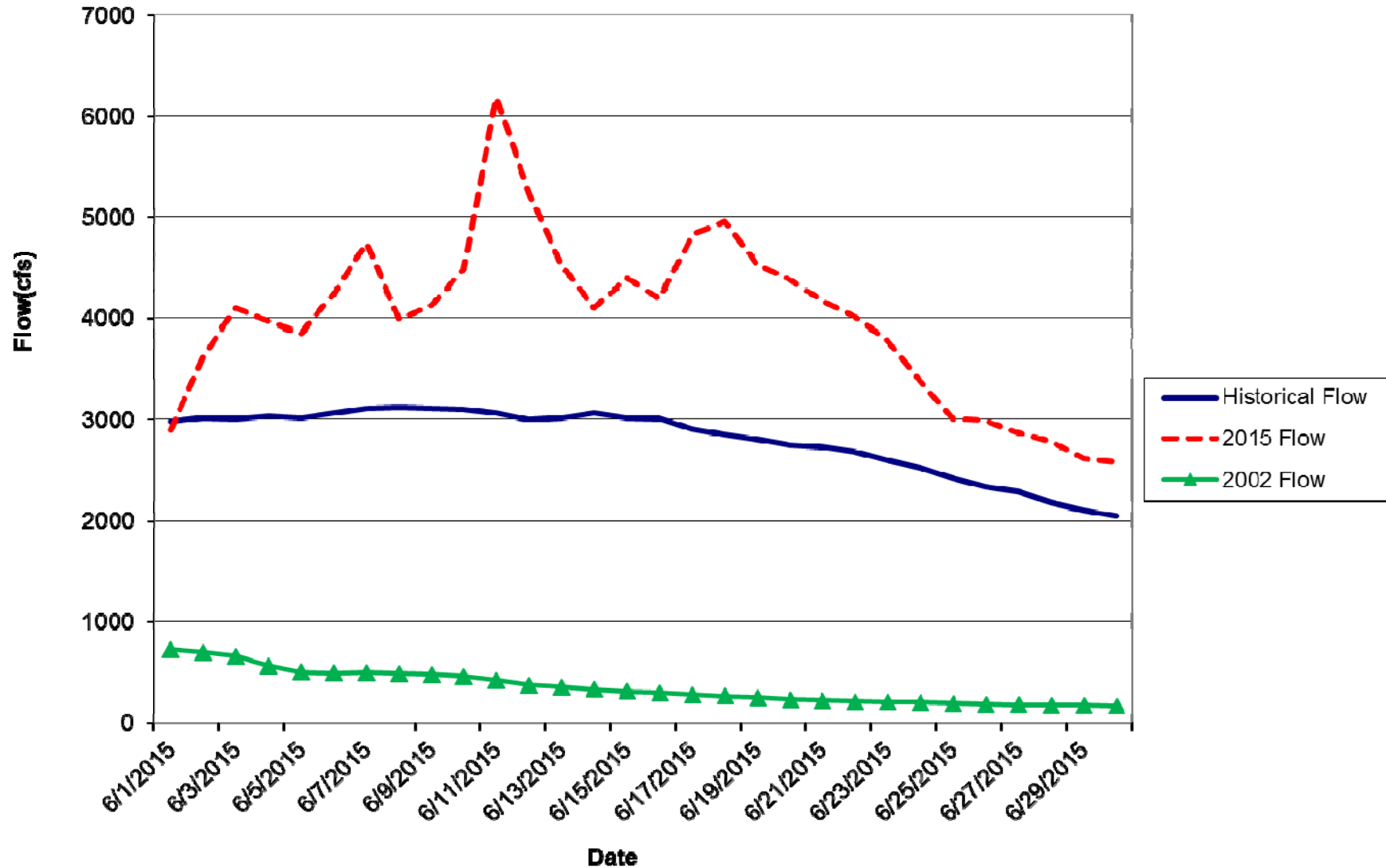
ANIMAS RIVER AT TALL TIMBER "TEFT" (09359500)



Stream Flow Data for the month of June is 151% of average.

USGS STREAM FLOW DATA

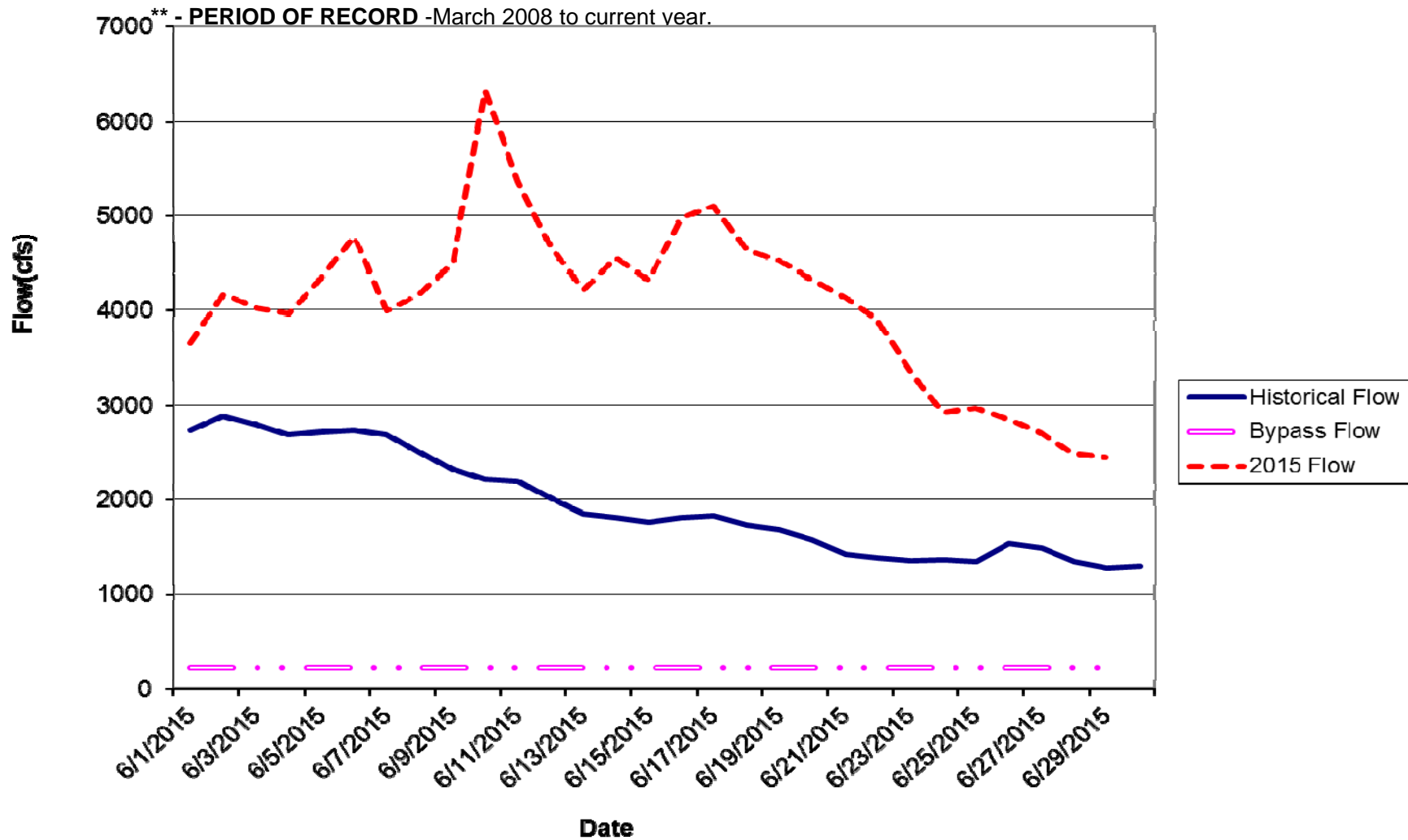
ANIMAS RIVER AT DURANGO (09359500)



Stream Flow Data for the month of June is 143% of average

USGS STREAM FLOW DATA

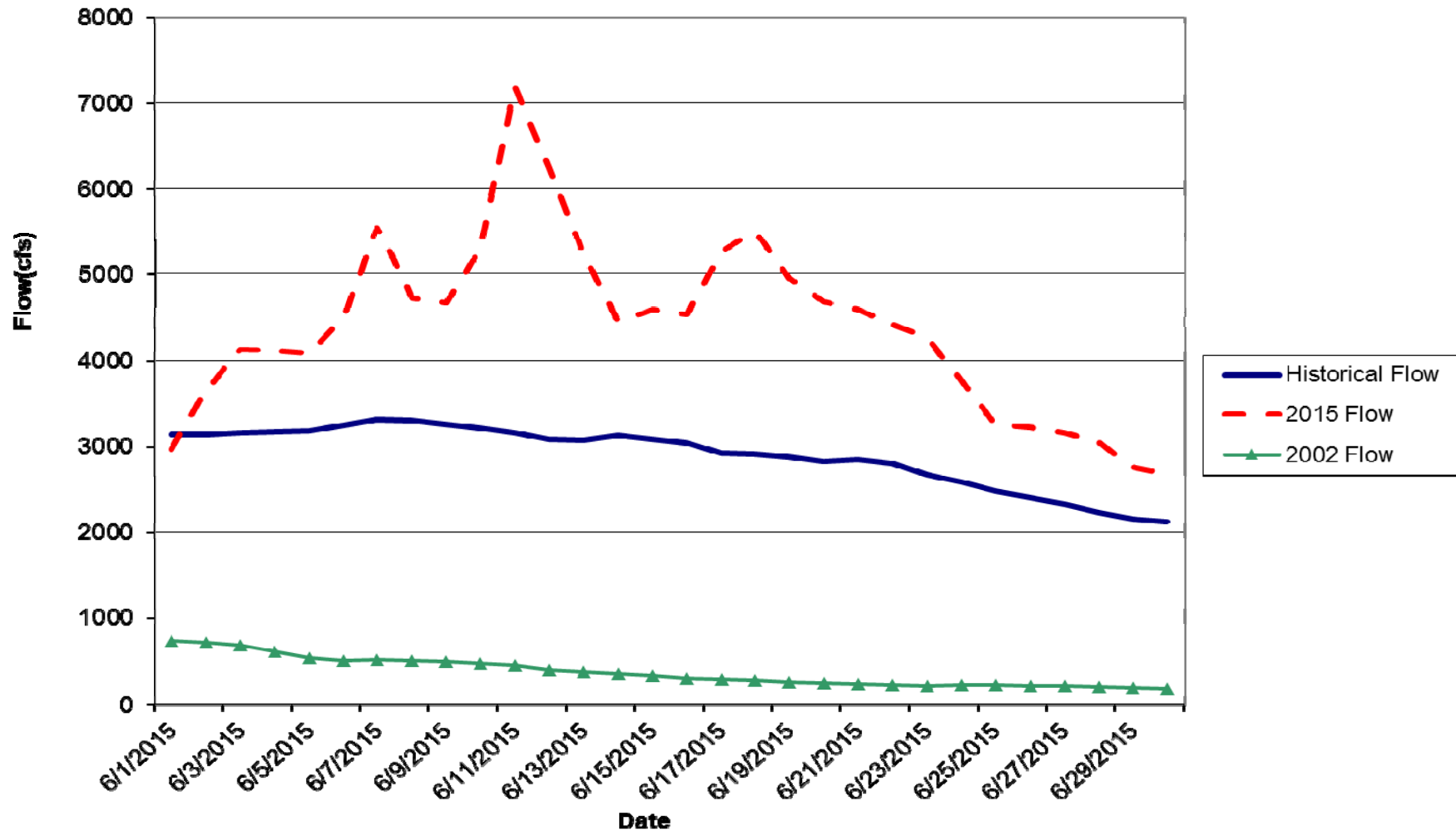
ANIMAS RIVER BELOW DURANGO PUMPING PLANT (09362520)



Stream Flow Data for the month of June is 207% of average

USGS STREAM FLOW DATA

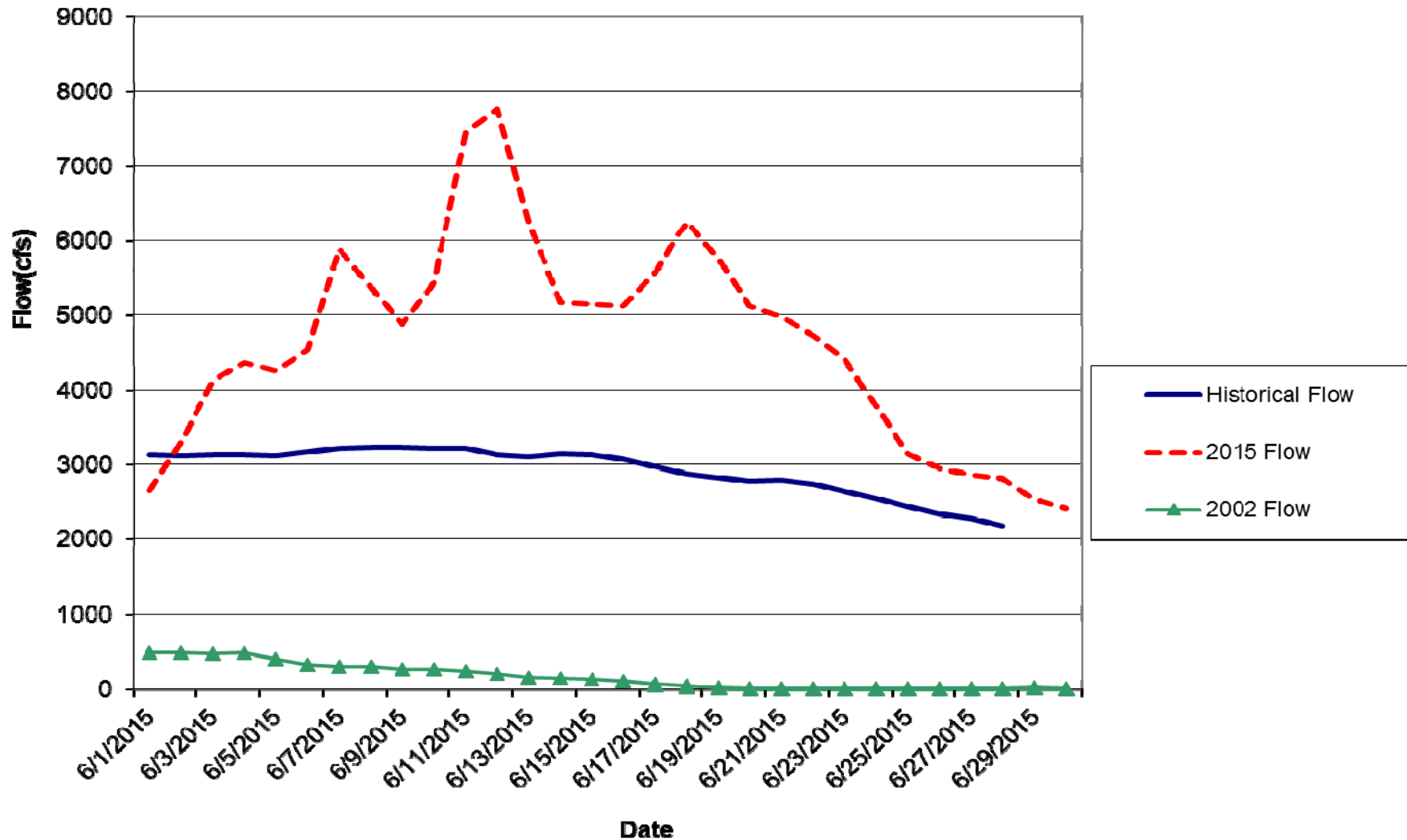
ANIMAS RIVER NEAR CEDAR HILL (09363500)



Stream Flow Data for the month of June is 152% of average

USGS STREAM FLOW DATA

ANIMAS RIVER AT FARMINGTON (09364500)



Stream Flow Data for the month of June is 162% of average

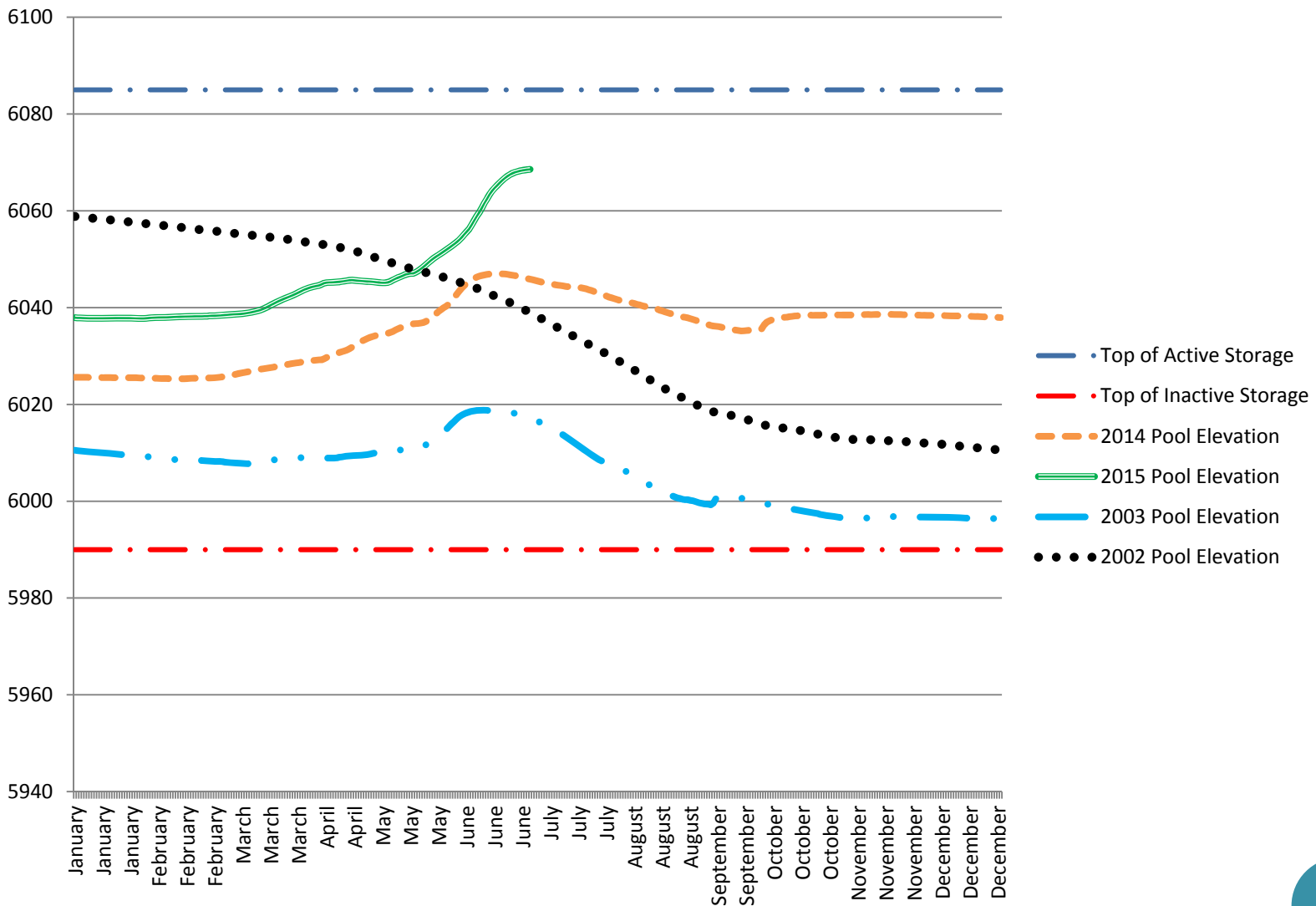
Animas – La Plata Project

Status: June 16, 2015

- Lake Nighthorse Pool Elevation: 6882.09 feet.
- Lake Nighthorse Storage: 115,210 acre-feet of live storage, which is just over 100% full.
- The pumping plant ceased pumping operations June 4th at 4:15 pm.
- The observed flow for the Animas River at Durango during June was 239,020 acre-feet. The most probable flow forecast for July as of June 29th is 68,000 acre-feet.



NAVAJO RESERVOIR POOL ELEVATION



Navajo Reservoir's current water content as of July 1st is 86% of capacity

Data Obtained from BOR Website

SEA SURFACE TEMPERATURE

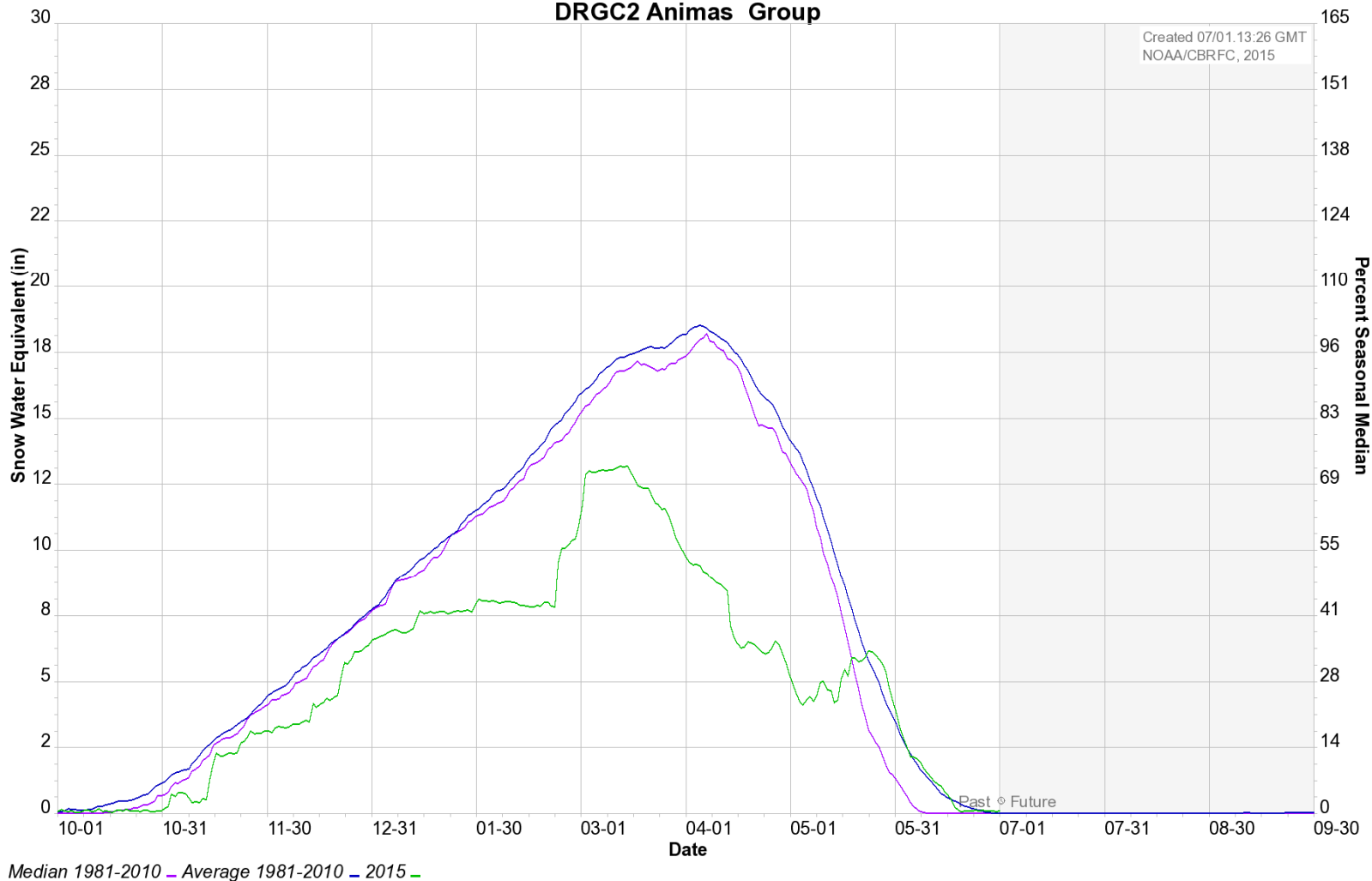
- El Niño conditions are present.
- Positive equatorial sea surface temperature (SST) anomalies continue across most of the Pacific Ocean.
- There is a greater than 90% chance that El Niño will continue through Northern Hemisphere fall 2015, and around an 85% chance it will last through the 2015-16 winter.



PRECIPITATION UPDATE

ANIMAS RIVER BASIN SNOTEL SNOW WATER EQUIVALENT (WY 2015)

Colorado Basin River Forecast Center
DRGC2 Animas Group

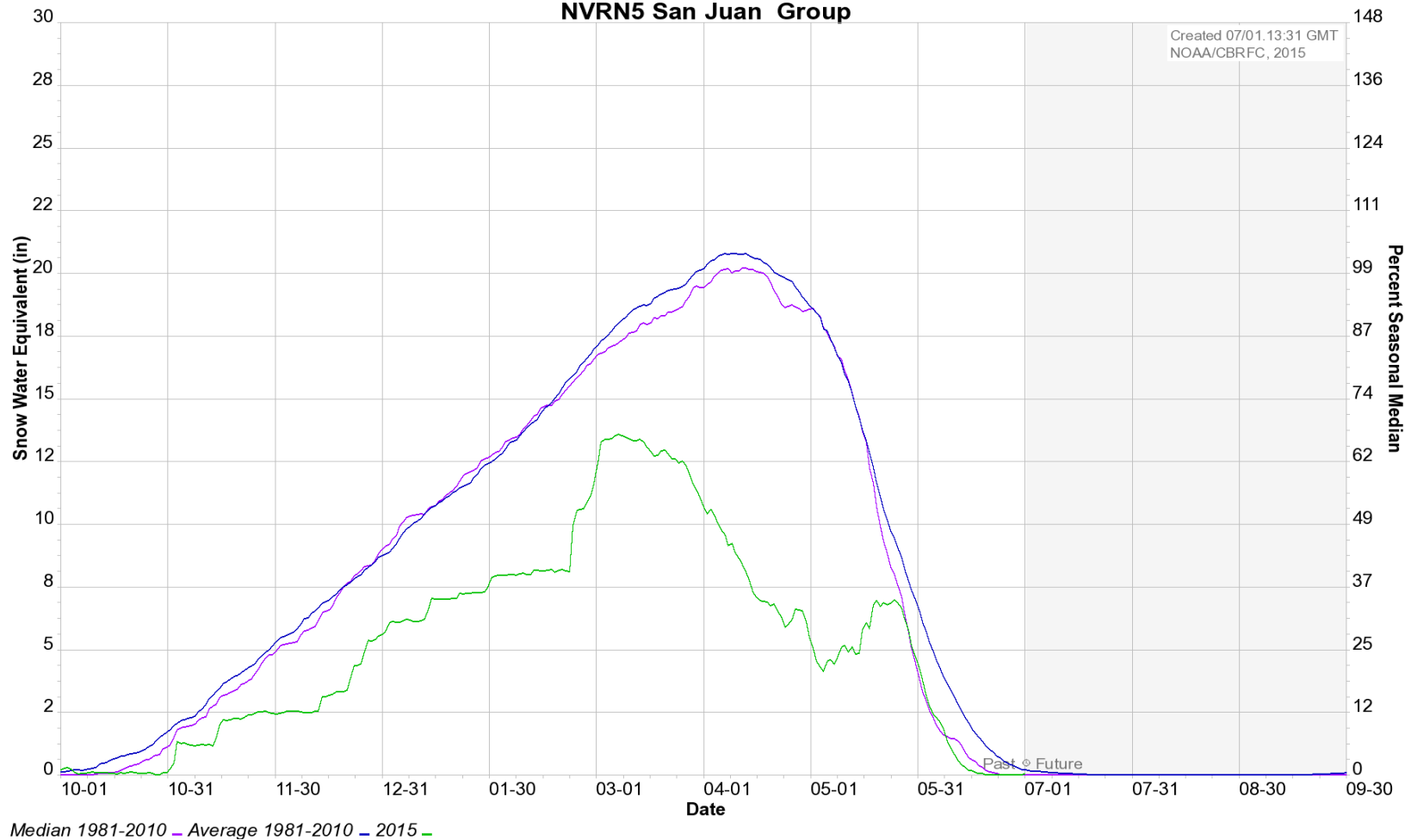


Snow Water Equivalent as of July 1, 2015 is down to zero.

PRECIPITATION UPDATE

SAN JUAN RIVER BASIN SNOTEL SNOW WATER EQUIVALENT (WY 2015)

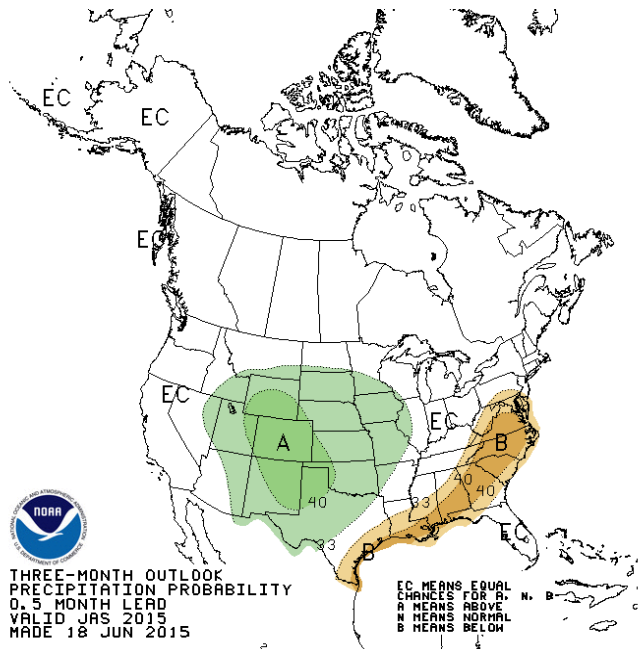
Colorado Basin River Forecast Center
NVRN5 San Juan Group



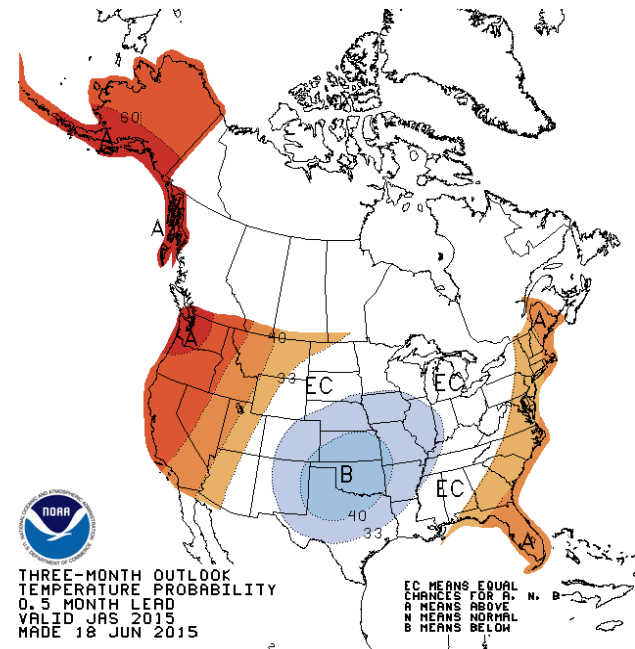
Snow Water Equivalent as of July 1, 2015 is down to zero.

PRECIPITATION AND TEMPERATURE OUTLOOK

Precipitation Jul-Aug-Sep 2015



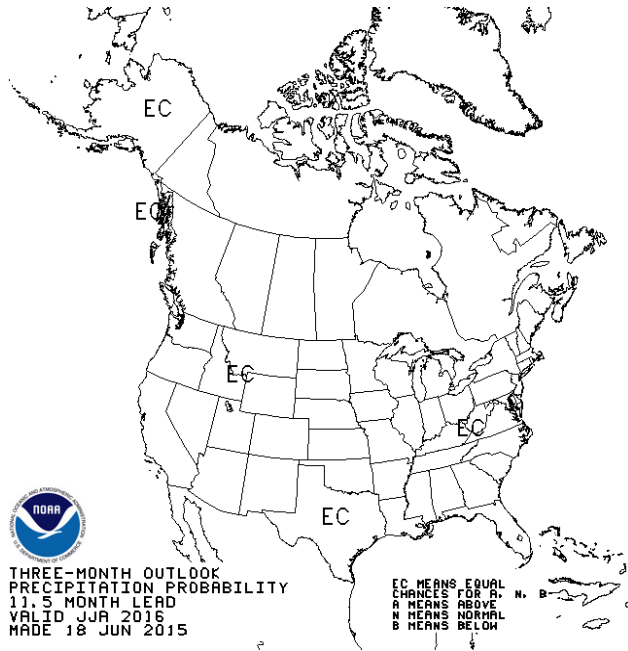
Temperature Jul-Aug-Sep 2015



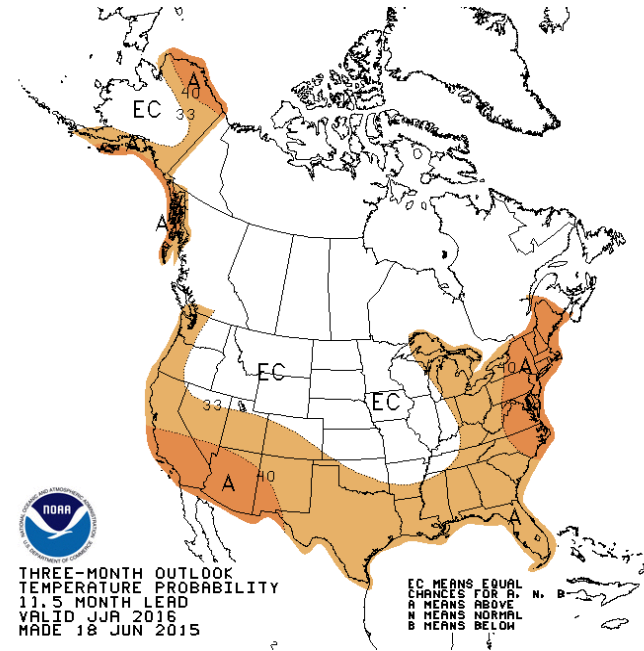
Precip	Temp	Probability anomaly as shown on map	Probability of occurrence for each Equal			Most likely category
			A	N	B	
Green shades	Red shades	40%-50%	73.3%-83.3%	23.3%-13.3%	3.3%	"Above"
		30%-40%	63.3%-73.3%	33.3%-23.3%	3.3%	"Above"
		20%-30%	53.3%-63.3%	33.3%	13.3%-3.3%	"Above"
		10%-20%	43.3%-53.3%	33.3%	23.3%-13.3%	"Above"
		5%-10%	38.3%-43.3%	33.3%	23.3%-28.3%	"Above"
0%-5%	0%-5%	33.3%-38.3%	33.3%	33.3%-28.3%	"Above"	
Grey	Grey	0%-5%	30.8%-33.3%	33.3%-38.3%	30.8%-33.3%	"Near Normal"
		5%-10%	28.3%-30.8%	38.3%-43.3%	28.3%-30.8%	"Near Normal"
Orange/Brown shades	Blue shades	0%-5%	33.3%-28.3%	33.3%	33.3%-38.3%	"Below"
		5%-10%	28.3%-23.3%	33.3%	38.3%-43.3%	"Below"
		10%-20%	23.3%-13.3%	33.3%	43.3%-53.3%	"Below"
		20%-30%	13.3%-3.3%	33.3%	53.3%-63.3%	"Below"
		30%-40%	3.3%	33.3%-23.3%	63.3%-73.3%	"Below"
40%-50%	3.3%	23.3%-13.3%	73.3%-83.3%	"Below"		
White	White	0%	33.3%	33.3%	33.3%	"Equal Chances"

PRECIPITATION AND TEMPERATURE OUTLOOK

Precipitation Jun-Jul-Aug 2016



Temperature Jun-Jul-Aug 2016



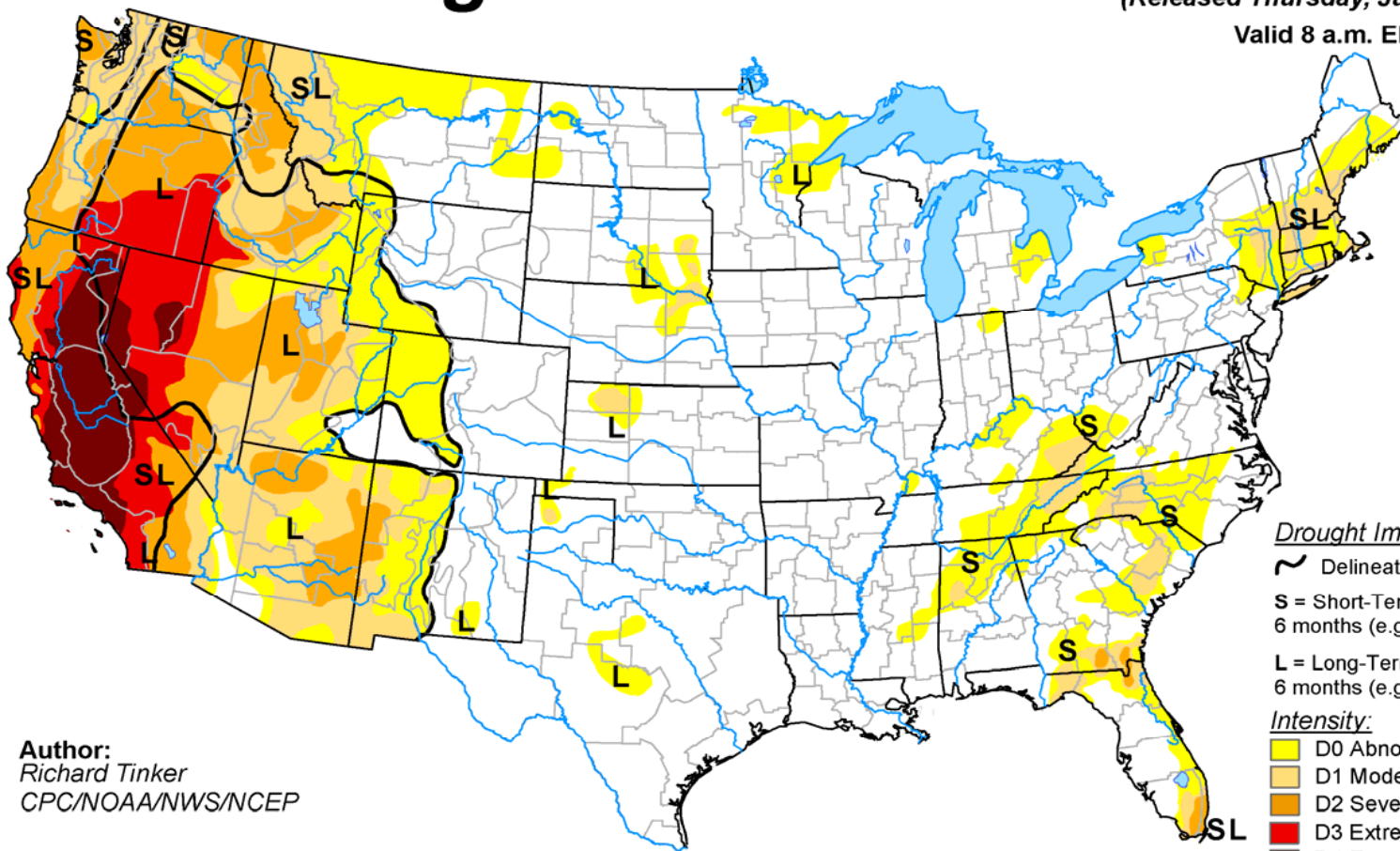
Precip	Temp	Probability anomaly as shown on map	Probability of occurrence for each Equal			Most likely category
			A	N	B	
Green shades	Red shades	40%-50%	73.3%-83.3%	23.3%-13.3%	3.3%	"Above"
		30%-40%	63.3%-73.3%	33.3%-23.3%	3.3%	"Above"
		20%-30%	53.3%-63.3%	33.3%	13.3%-3.3%	"Above"
		10%-20%	43.3%-53.3%	33.3%	23.3%-13.3%	"Above"
		5%-10%	38.3%-43.3%	33.3%	23.3%-28.3%	"Above"
0%-5%	0%-5%	33.3%-38.3%	33.3%	33.3%-28.3%	"Above"	
Grey shades	Grey shades	0%-5%	30.8%-33.3%	33.3%-38.3%	30.8%-33.3%	"Near Normal"
		5%-10%	28.3%-30.8%	38.3%-43.3%	28.3%-30.8%	"Near Normal"
Yellow/Orange shades	Blue shades	0%-5%	33.3%-28.3%	33.3%	33.3%-38.3%	"Below"
		5%-10%	28.3%-23.3%	33.3%	38.3%-43.3%	"Below"
		10%-20%	23.3%-13.3%	33.3%	43.3%-53.3%	"Below"
		20%-30%	13.3%-3.3%	33.3%	53.3%-63.3%	"Below"
		30%-40%	3.3%	33.3%-23.3%	63.3%-73.3%	"Below"
40%-50%	3.3%	23.3%-13.3%	73.3%-83.3%	"Below"		
White	White	0%	33.3%	33.3%	33.3%	"Equal Chances"

U.S. Drought Monitor

June 23, 2015

(Released Thursday, Jun. 25, 2015)

Valid 8 a.m. EDT



Drought Impact Types:

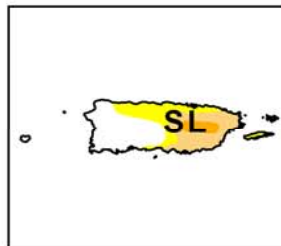
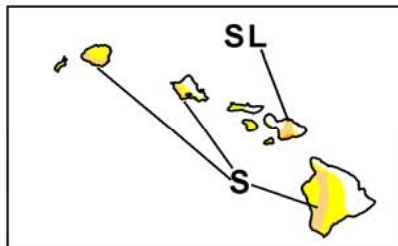
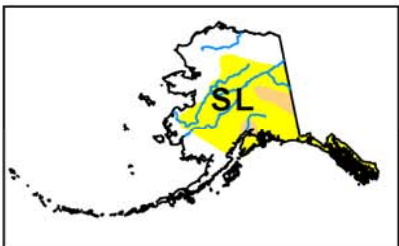
- ~ Delineates dominant impacts
- S = Short-Term, typically less than 6 months (e.g. agriculture, grasslands)
- L = Long-Term, typically greater than 6 months (e.g. hydrology, ecology)

Intensity:

- D0 Abnormally Dry
- D1 Moderate Drought
- D2 Severe Drought
- D3 Extreme Drought
- D4 Exceptional Drought

The Drought Monitor focuses on broad-scale conditions. Local conditions may vary. See accompanying text summary for forecast statements.

Author:
Richard Tinker
CPC/NOAA/NWS/NCEP



<http://droughtmonitor.unl.edu/>