

The logo for the San Juan Water Commission (SJWC) is located in the top left corner. It consists of the letters "SJWC" in a bold, blue, sans-serif font, enclosed within a rounded rectangular border. Below the letters, the full name "San Juan Water Commission" is written in a smaller, blue, sans-serif font.

SJWC

San Juan Water Commission

A decorative graphic on the left side of the slide features several overlapping teal circles of various sizes, arranged in a cluster that tapers downwards. The background of the slide includes a vertical light blue grid pattern on the left and thin vertical lines on the far left and far right.

Water Resource Update

August 12, 2015

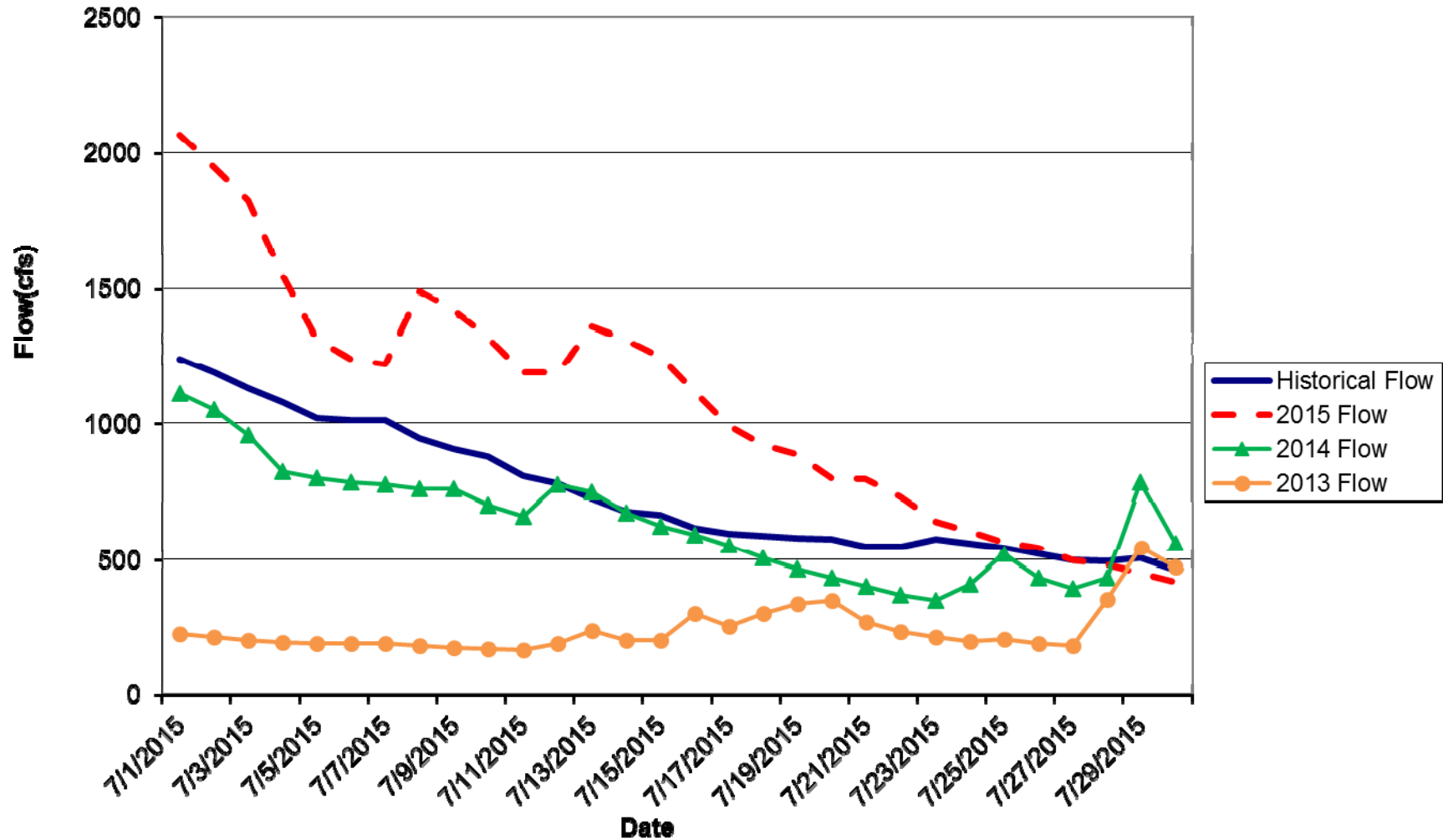


-
- Current Stream Conditions
 - Current Navajo Reservoir Status
 - Spring Runoff Observations
 - Current Climate Conditions and Outlook



USGS STREAM FLOW DATA

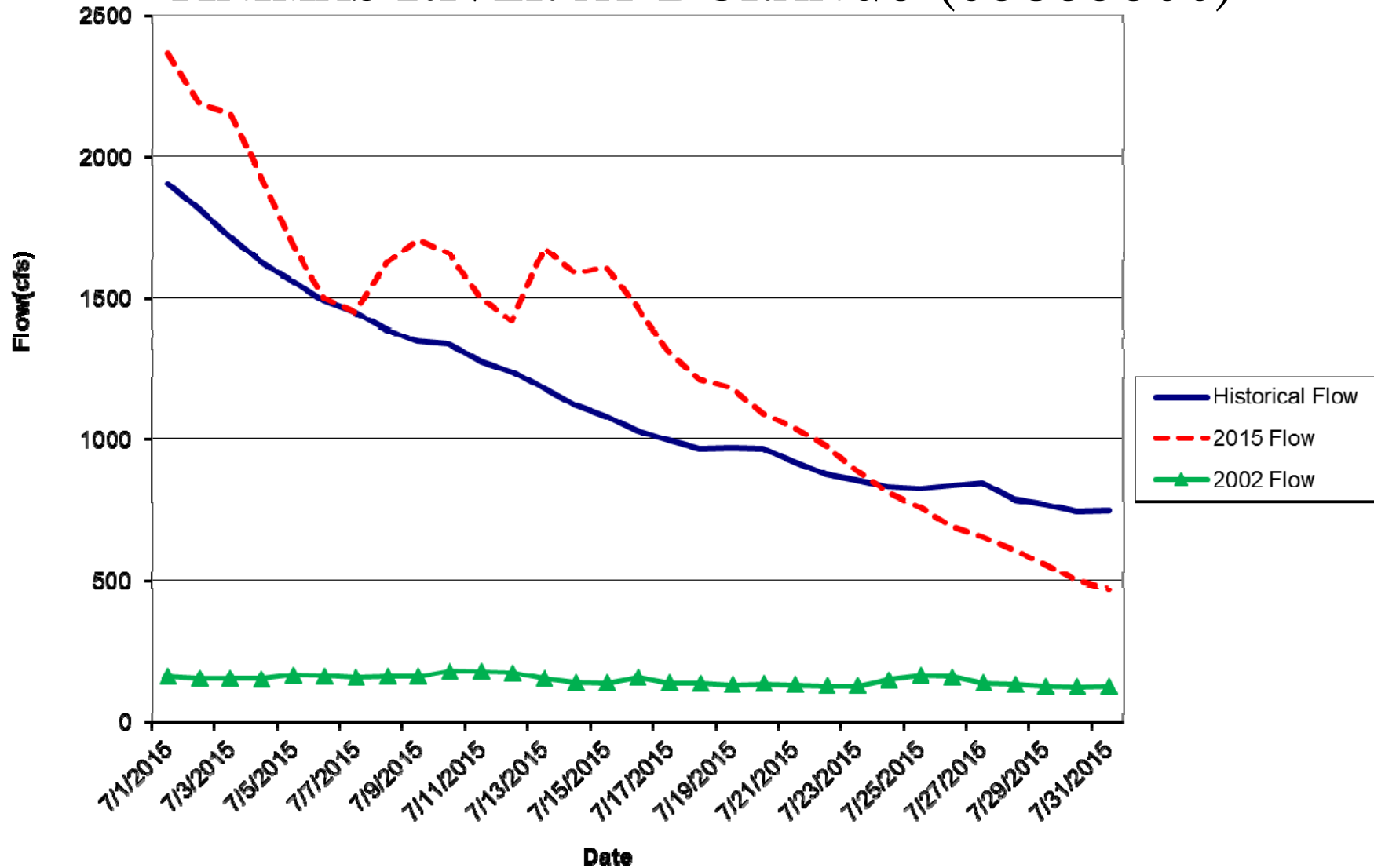
ANIMAS RIVER AT TALL TIMBER "TEFT" (09359500)



Stream Flow Data for the month of July is 143% of average.

USGS STREAM FLOW DATA

ANIMAS RIVER AT DURANGO (09359500)

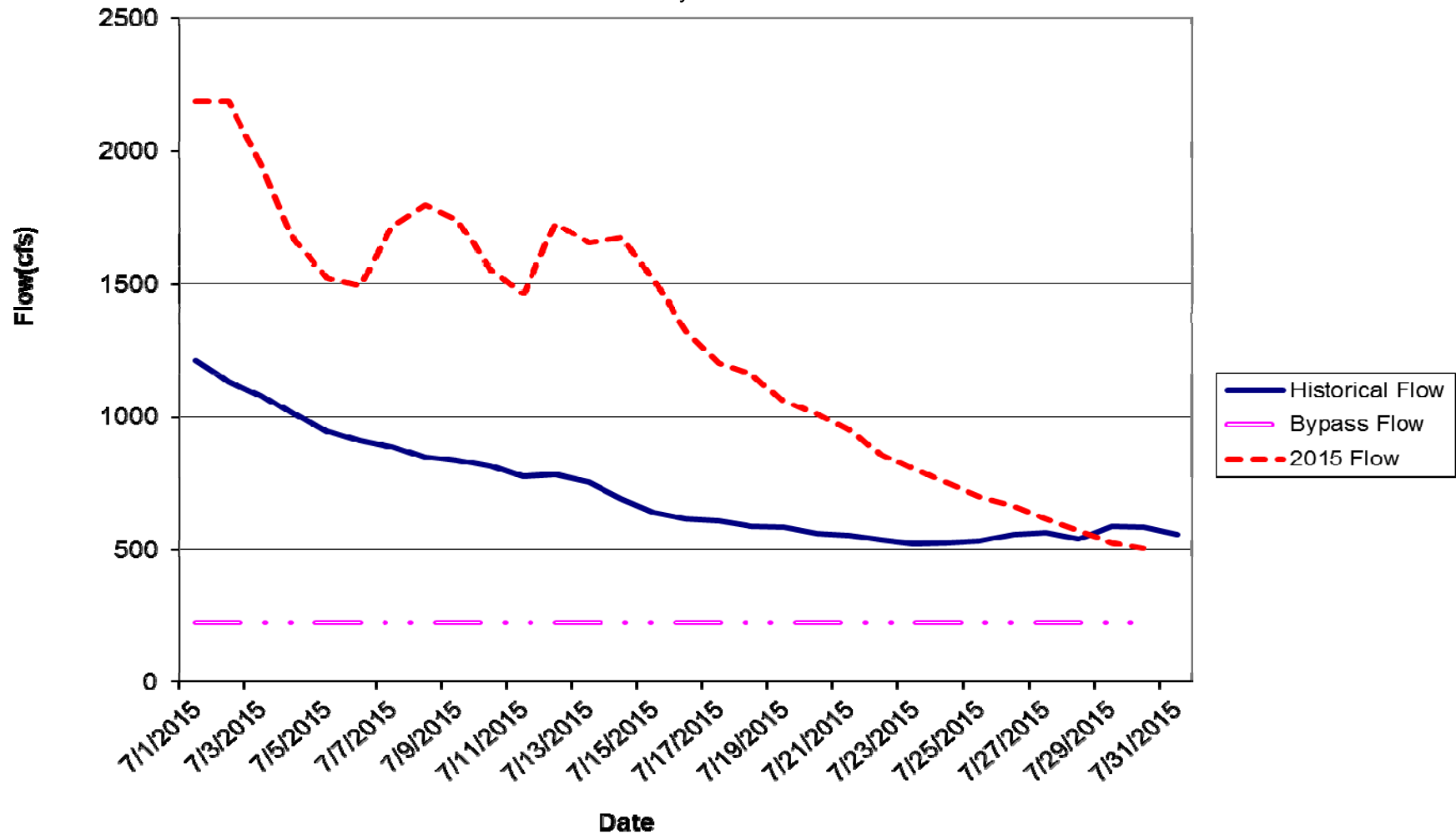


Stream Flow Data for the month of July is 113% of average

USGS STREAM FLOW DATA

ANIMAS RIVER BELOW DURANGO PUMPING PLANT (09362520)

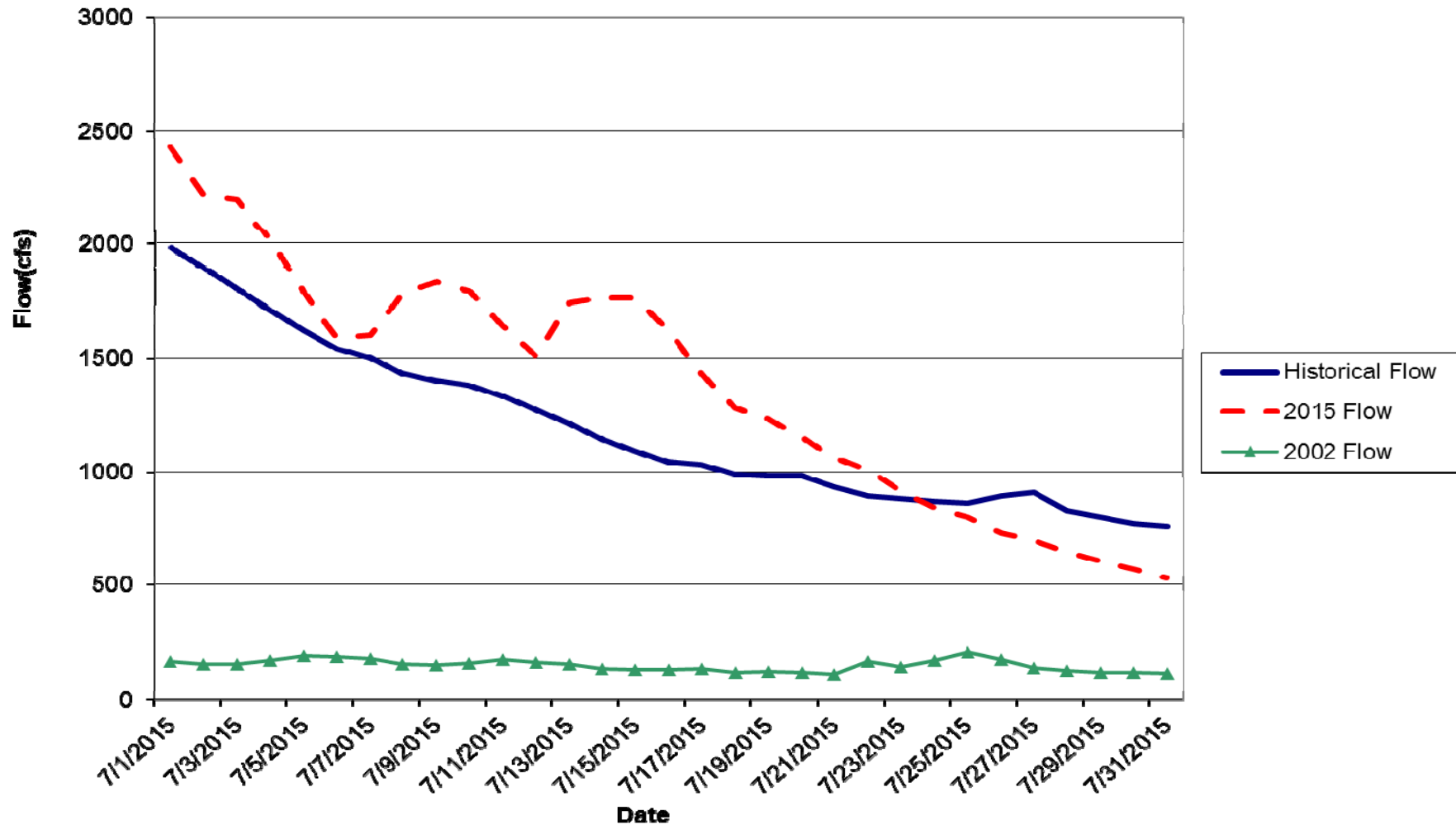
** - PERIOD OF RECORD - March 2008 to current year.



Stream Flow Data for the month of July is 183% of average

USGS STREAM FLOW DATA

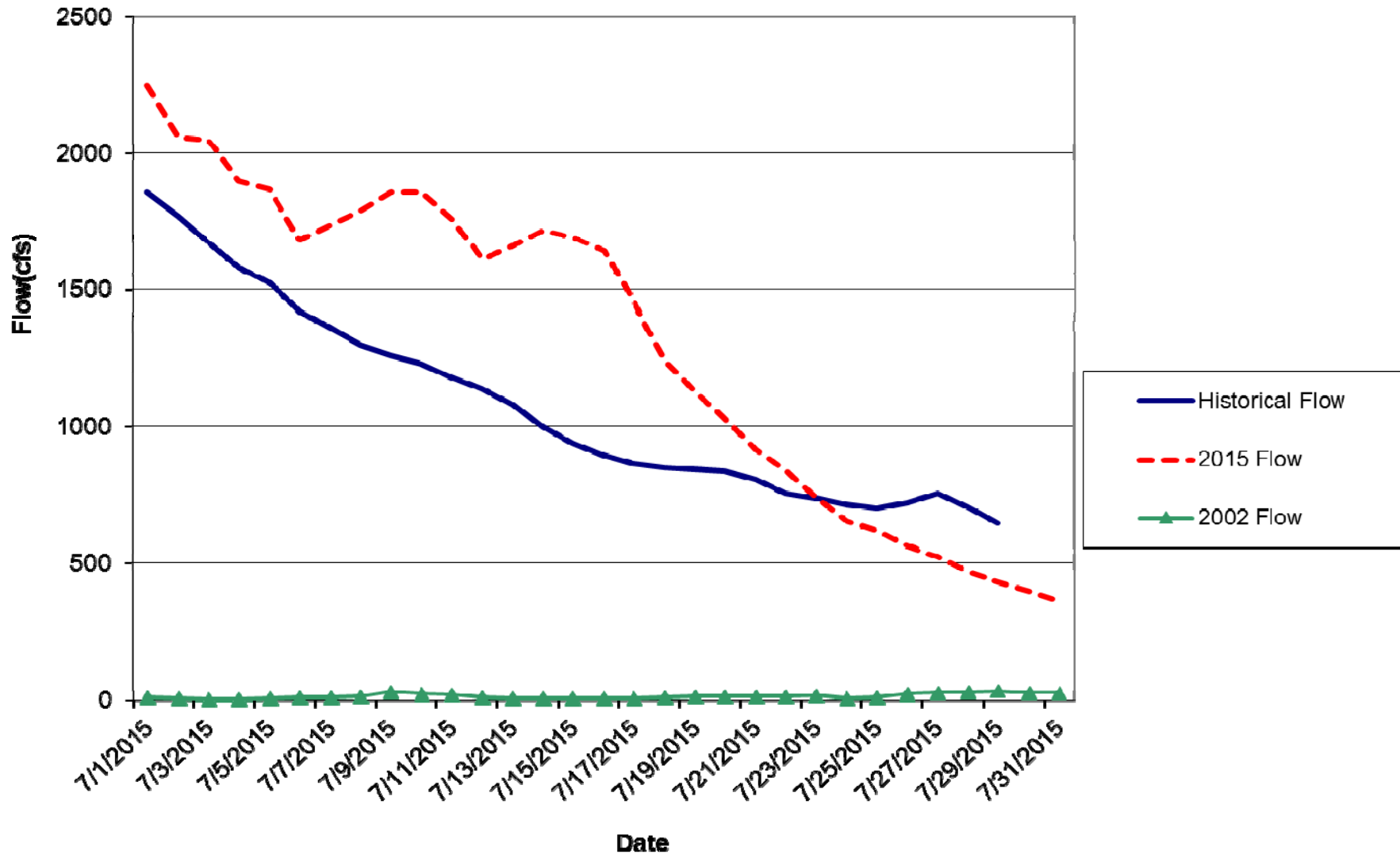
ANIMAS RIVER NEAR CEDAR HILL (09363500)



Stream Flow Data for the month of July is 117% of average

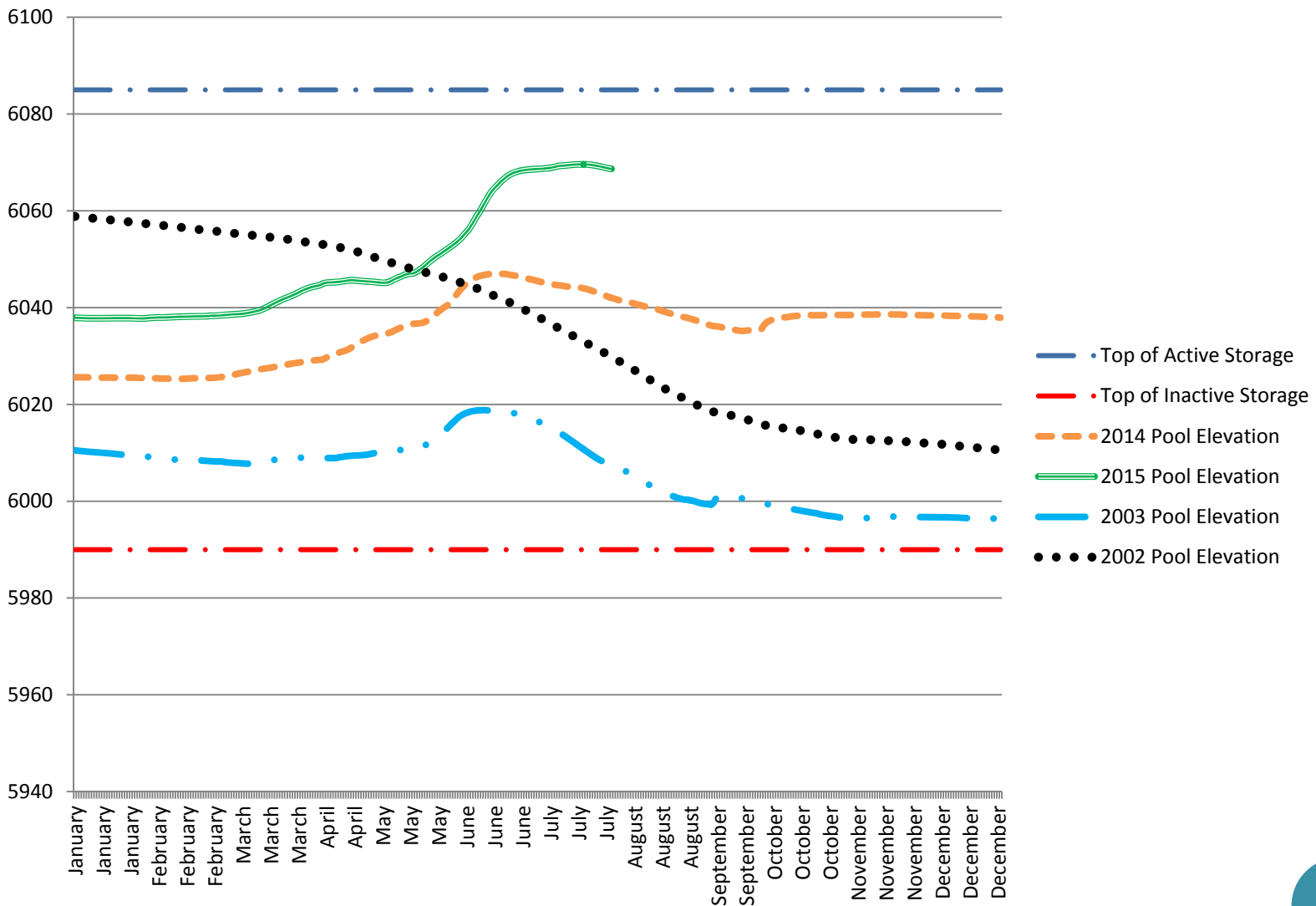
USGS STREAM FLOW DATA

ANIMAS RIVER AT FARMINGTON (09364500)



Stream Flow Data for the month of July is 125% of average

NAVAJO RESERVOIR POOL ELEVATION

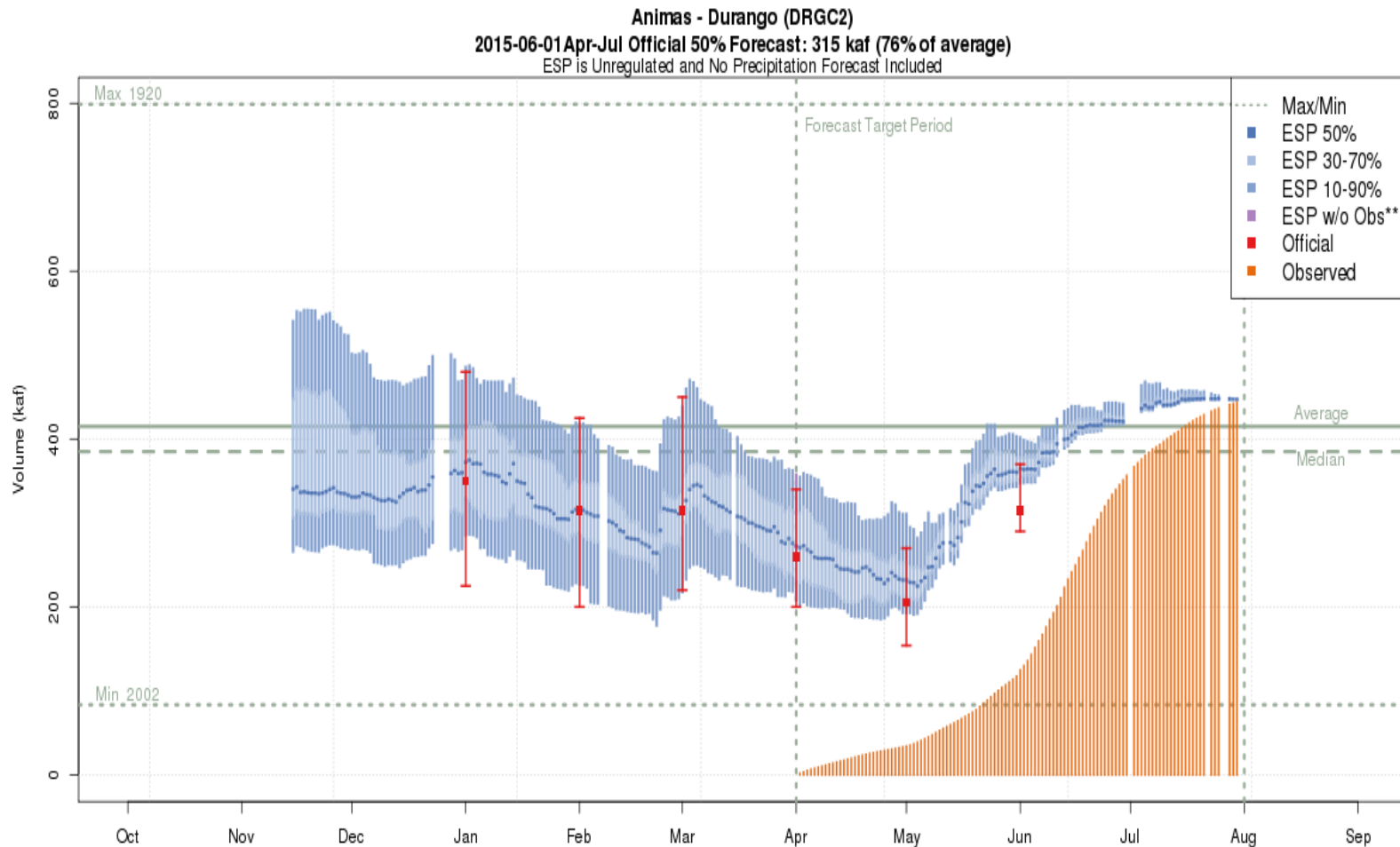


Navajo Reservoir's current water content as of July 31st is 86% of capacity

Data Obtained from BOR Website

PRECIPITATION UPDATE

ANIMAS RIVER BASIN



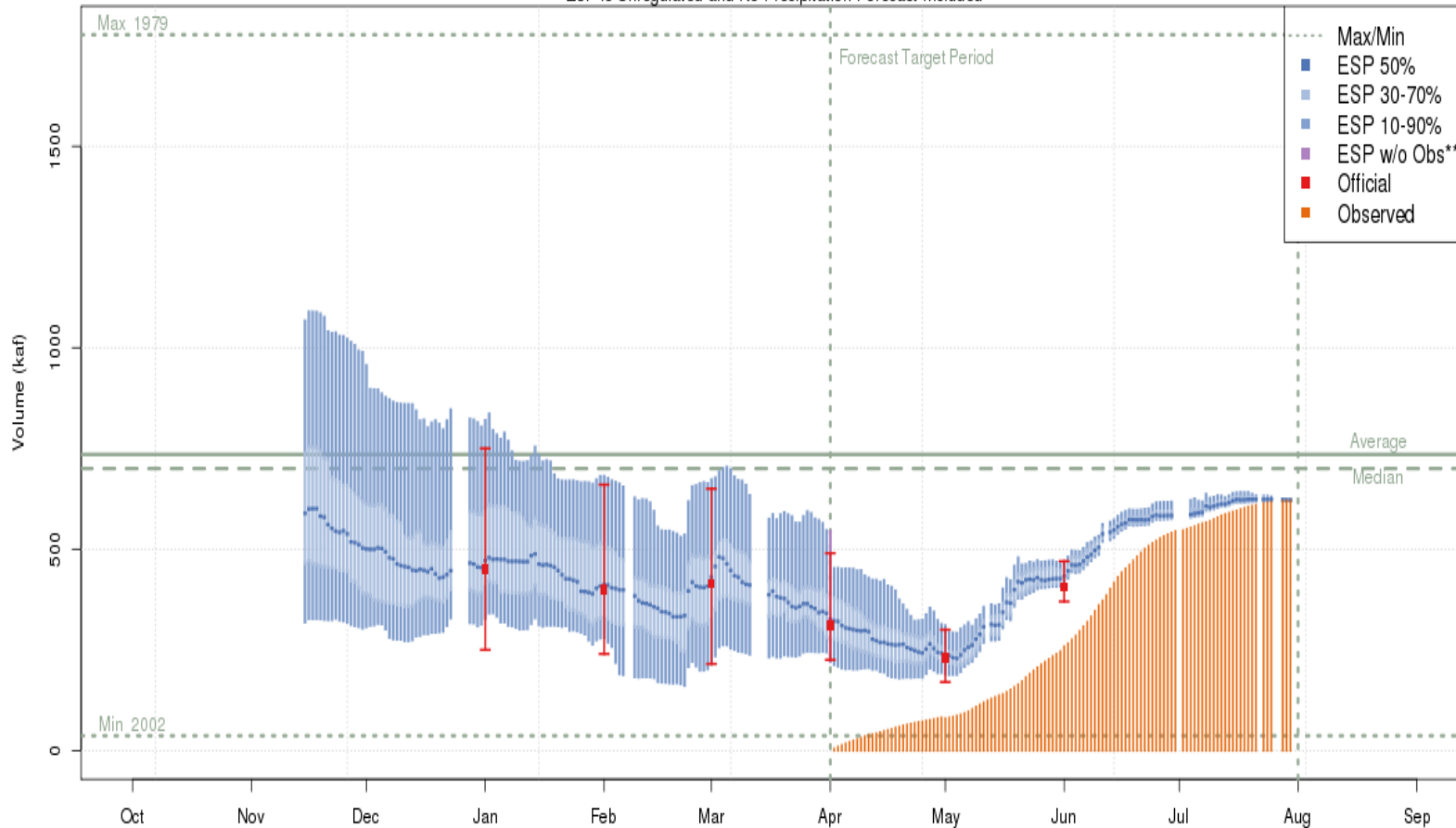
The latest (2015-07-30) 50% ESP forecast is 447 kaf.
Plot Created 2015-08-04 11:25:58, NOAA / NWS / CBRFC
Forecasts in the forecast target period include observed values.

Flows in the Animas River at Durango, CO measured 441,530 acre feet from April-July. This is above average.

PRECIPITATION UPDATE

SAN JUAN RIVER BASIN

San Juan - Navajo Res- Archuleta- Nr (NVRN5)
2015-06-01 Apr-Jul Official 50% Forecast: 405 kaf (55% of average)
ESP is Unregulated and No Precipitation Forecast Included



The latest (2015-07-30) 50% ESP forecast is 622 kaf.
Plot Created 2015-08-04 11:43:11, NOAA / NWS / CBRFC
Forecasts in the forecast target period include observed values.

Flows in the San Juan River at Navajo Reservoir measured 619,650 acre feet from April-July. This is slightly below average.

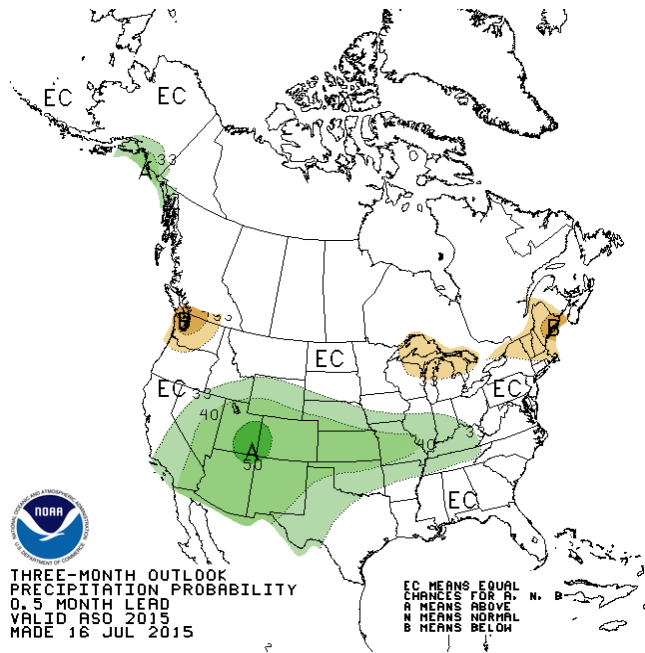
SEA SURFACE TEMPERATURE

- El Niño conditions are present.
- Positive equatorial sea surface temperature (SST) anomalies continue across most of the Pacific Ocean.
- There is a greater than 90% chance that El Niño will continue through Northern Hemisphere winter 2015-16, and around an 80% chance it will last through early spring 2016.

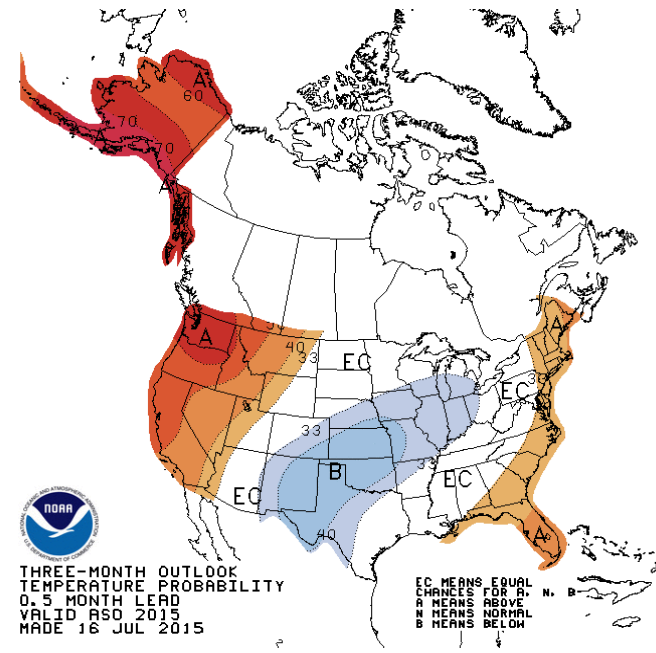


PRECIPITATION AND TEMPERATURE OUTLOOK

Precipitation Aug-Sep-Oct 2015



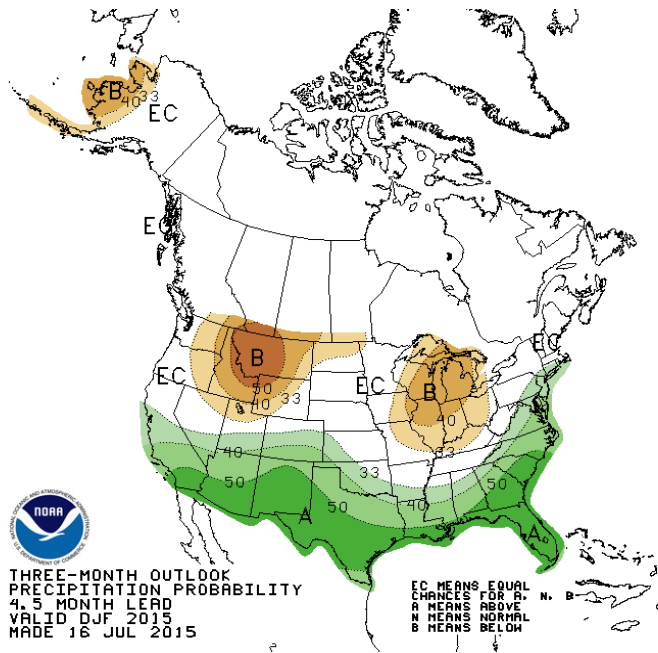
Temperature Aug-Sep-Oct 2015



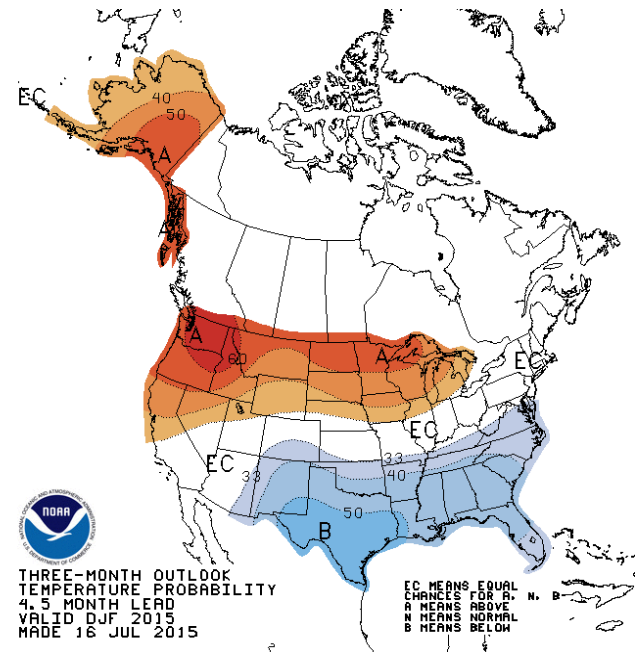
Precip	Temp	Probability anomaly as shown on map	Probability of occurrence for each Equal			Most likely category
			A	N	B	
Green shades	Red shades	40%-50%	73.3%-83.3%	23.3%-13.3%	3.3%	"Above"
		30%-40%	63.3%-73.3%	33.3%-23.3%	3.3%	"Above"
		20%-30%	53.3%-63.3%	33.3%	13.3%-3.3%	"Above"
		10%-20%	43.3%-53.3%	33.3%	23.3%-13.3%	"Above"
		5%-10%	38.3%-43.3%	33.3%	23.3%-28.3%	"Above"
0%-5%	33.3%-38.3%	33.3%	33.3%-28.3%	"Above"		
Grey shades	Grey shades	0%-5%	30.8%-33.3%	33.3%-38.3%	30.8%-33.3%	"Near Normal"
		5%-10%	28.3%-30.8%	38.3%-43.3%	28.3%-30.8%	"Near Normal"
Yellow/Orange shades	Blue shades	0%-5%	33.3%-28.3%	33.3%	33.3%-38.3%	"Below"
		5%-10%	28.3%-23.3%	33.3%	38.3%-43.3%	"Below"
		10%-20%	23.3%-13.3%	33.3%	43.3%-53.3%	"Below"
		20%-30%	13.3%-3.3%	33.3%	53.3%-63.3%	"Below"
		30%-40%	3.3%	33.3%-23.3%	63.3%-73.3%	"Below"
40%-50%	3.3%	23.3%-13.3%	73.3%-83.3%	"Below"		
White	White	0%	33.3%	33.3%	33.3%	"Equal Chances"

PRECIPITATION AND TEMPERATURE OUTLOOK

Precipitation Dec-Jan-Feb 15/16



Temperature Dec-Jan-Feb 15/16



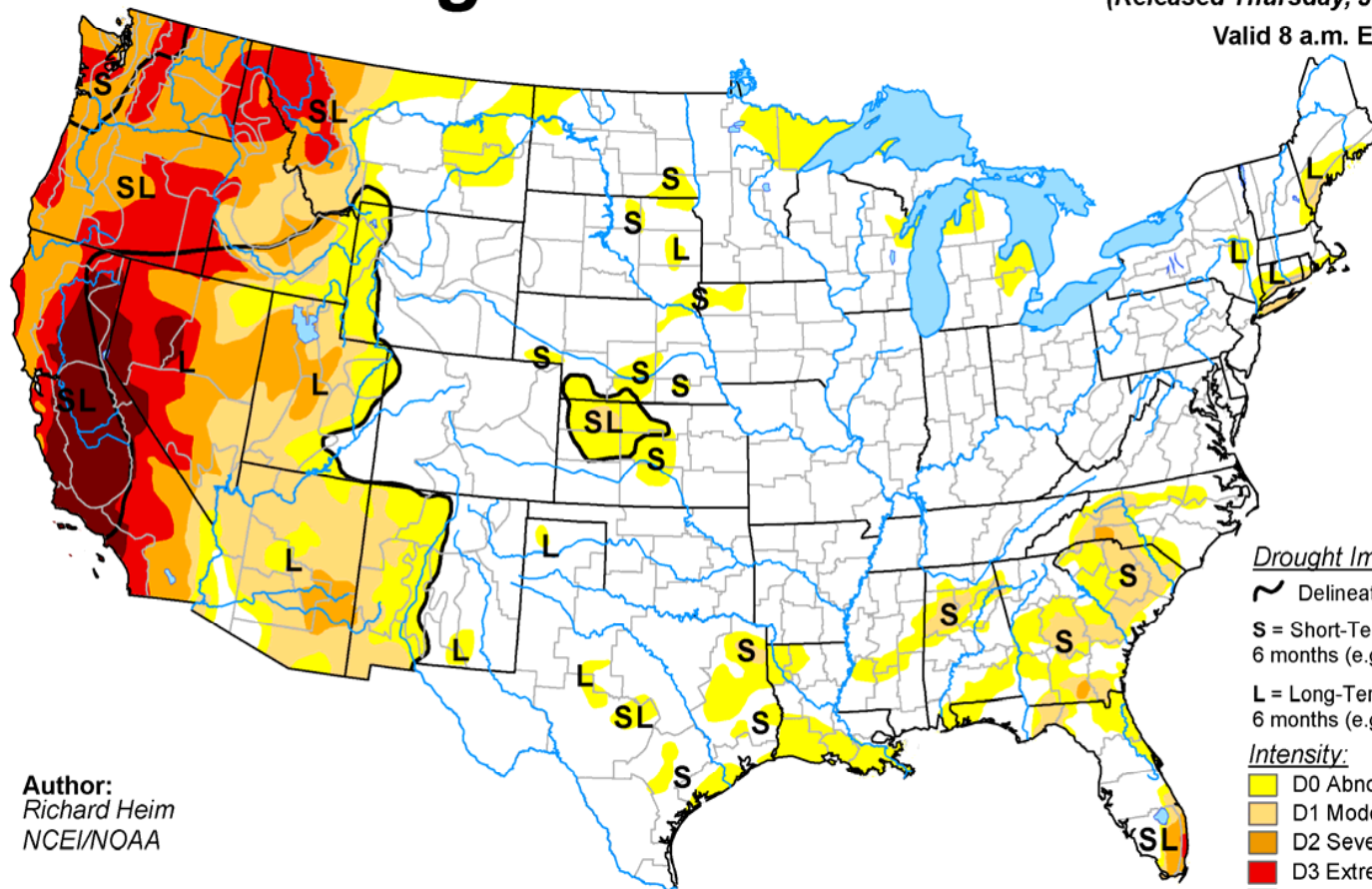
Precip	Temp	Probability anomaly as shown on map	Probability of occurrence for each Equal			Most likely category
			A	N	B	
Green shades	Red shades	40%-50%	73.3%-83.3%	23.3%-13.3%	3.3%	"Above"
		30%-40%	63.3%-73.3%	33.3%-23.3%	3.3%	"Above"
		20%-30%	53.3%-63.3%	33.3%	13.3%-3.3%	"Above"
		10%-20%	43.3%-53.3%	33.3%	23.3%-13.3%	"Above"
		5%-10%	38.3%-43.3%	33.3%	23.3%-28.3%	"Above"
0%-5%	0%-5%	33.3%-38.3%	33.3%	33.3%-28.3%	"Above"	
Grey	Grey	0%-5%	30.8%-33.3%	33.3%-38.3%	30.8%-33.3%	"Near Normal"
		5%-10%	28.3%-30.8%	38.3%-43.3%	28.3%-30.8%	"Near Normal"
Orange/Red shades	Blue shades	0%-5%	33.3%-28.3%	33.3%	33.3%-38.3%	"Below"
		5%-10%	28.3%-23.3%	33.3%	38.3%-43.3%	"Below"
		10%-20%	23.3%-13.3%	33.3%	43.3%-53.3%	"Below"
		20%-30%	13.3%-3.3%	33.3%	53.3%-63.3%	"Below"
		30%-40%	3.3%	33.3%-23.3%	63.3%-73.3%	"Below"
40%-50%	3.3%	23.3%-13.3%	73.3%-83.3%	"Below"		
White	White	0%	33.3%	33.3%	33.3%	"Equal Chances"

U.S. Drought Monitor

July 28, 2015

(Released Thursday, Jul. 30, 2015)

Valid 8 a.m. EDT



Author:
Richard Heim
NCEI/NOAA

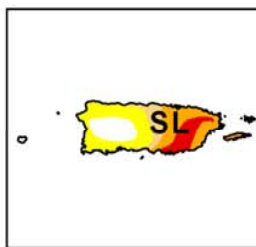
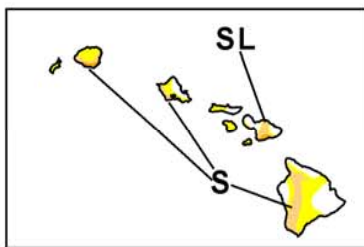
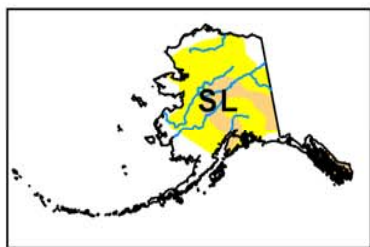
Drought Impact Types:

- ~ Delineates dominant impacts
- S = Short-Term, typically less than 6 months (e.g. agriculture, grasslands)
- L = Long-Term, typically greater than 6 months (e.g. hydrology, ecology)

Intensity:

- D0 Abnormally Dry
- D1 Moderate Drought
- D2 Severe Drought
- D3 Extreme Drought
- D4 Exceptional Drought

The Drought Monitor focuses on broad-scale conditions. Local conditions may vary. See accompanying text summary for forecast statements.



<http://droughtmonitor.unl.edu/>