

The logo for the San Juan Water Commission (SJWC) is located in the top left corner. It consists of the letters "SJWC" in a bold, blue, sans-serif font, enclosed within a rounded rectangular border. Below the letters, the full name "San Juan Water Commission" is written in a smaller, blue, sans-serif font.

**SJWC**

San Juan Water Commission

A decorative vertical bar on the left side of the slide features a light blue grid pattern. To its right, several teal-colored circles of varying sizes are arranged in a cluster, resembling bubbles or water droplets.

# Water Resource Update

September 2, 2015

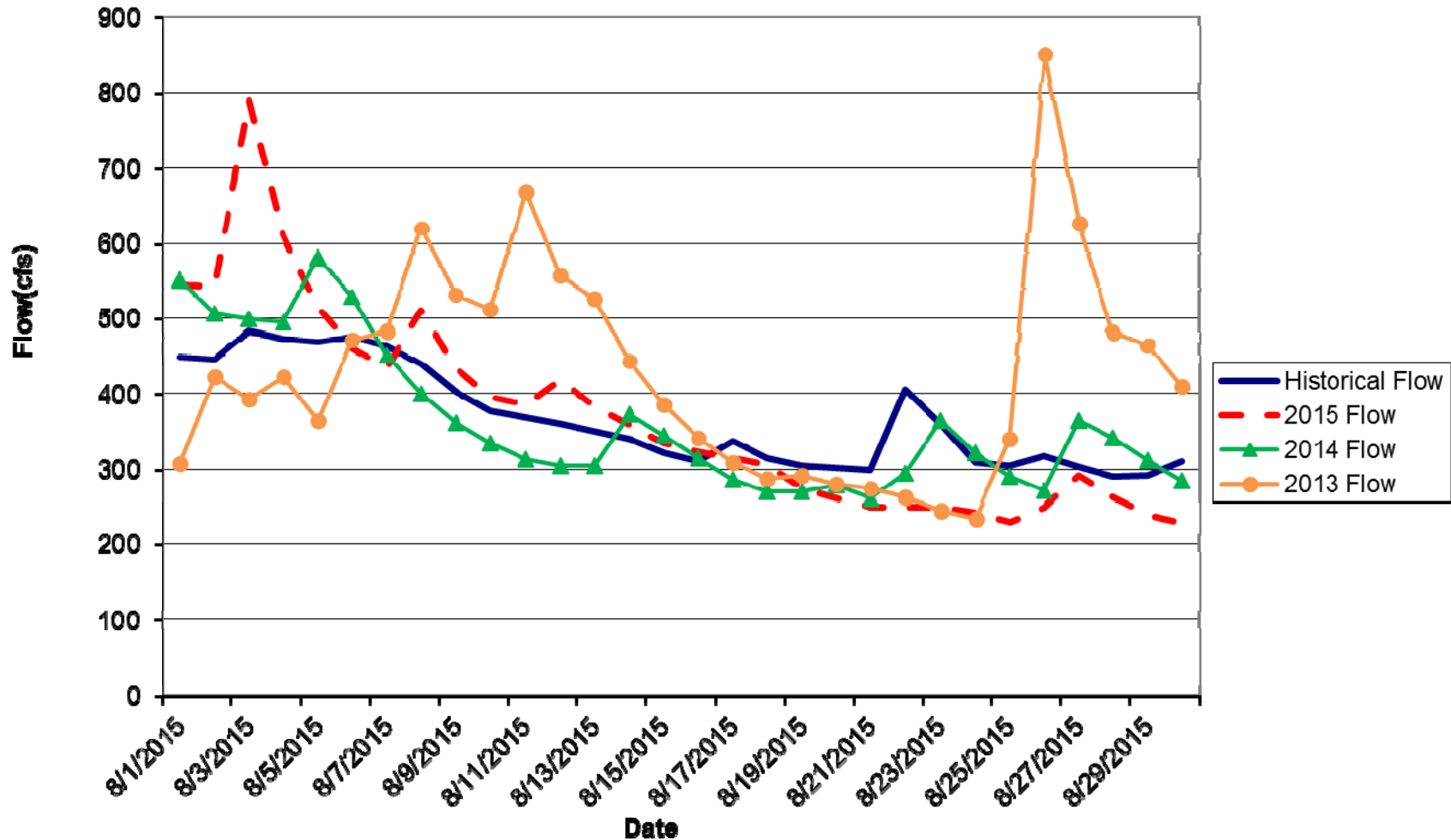


- 
- Current Stream Conditions
  - Current Navajo Reservoir Status
  - A-LP Project Update
  - Current Climate Conditions and Outlook



# USGS STREAM FLOW DATA

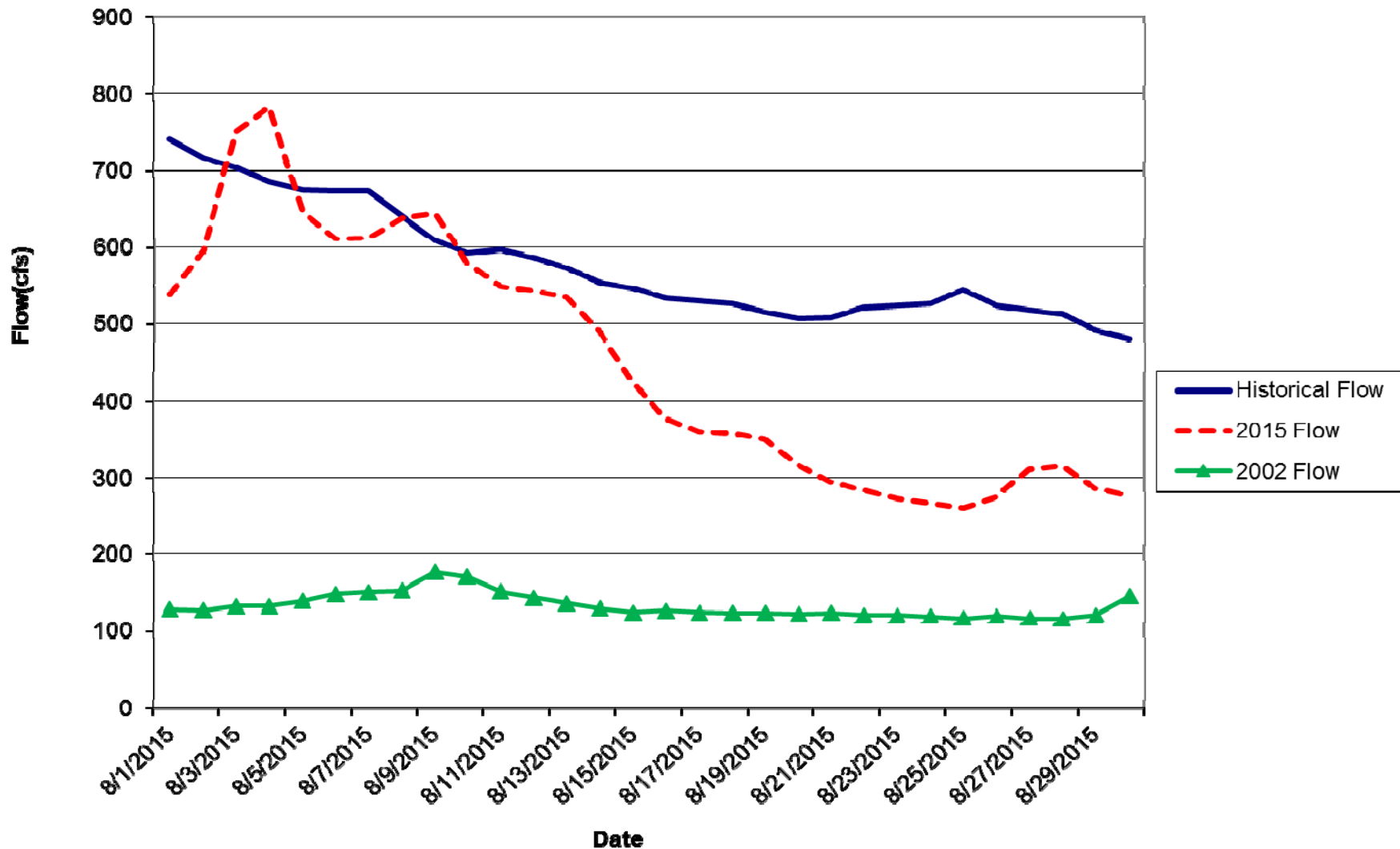
## ANIMAS RIVER AT TALL TIMBER "TEFT" (09359500)



Stream Flow Data for the month of August is 101% of average.

# USGS STREAM FLOW DATA

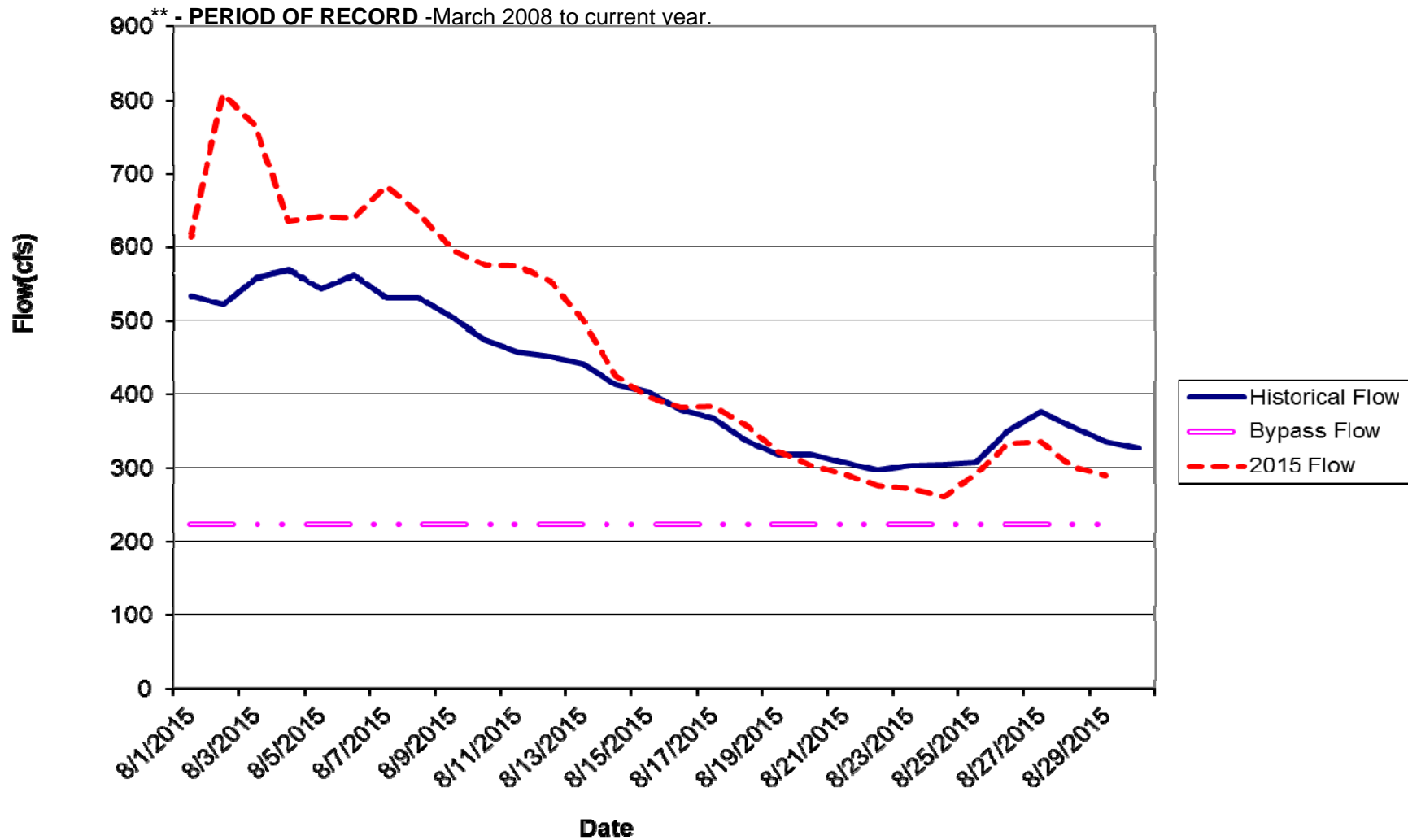
## ANIMAS RIVER AT DURANGO (09359500)



Stream Flow Data for the month of August is 78% of average

# USGS STREAM FLOW DATA

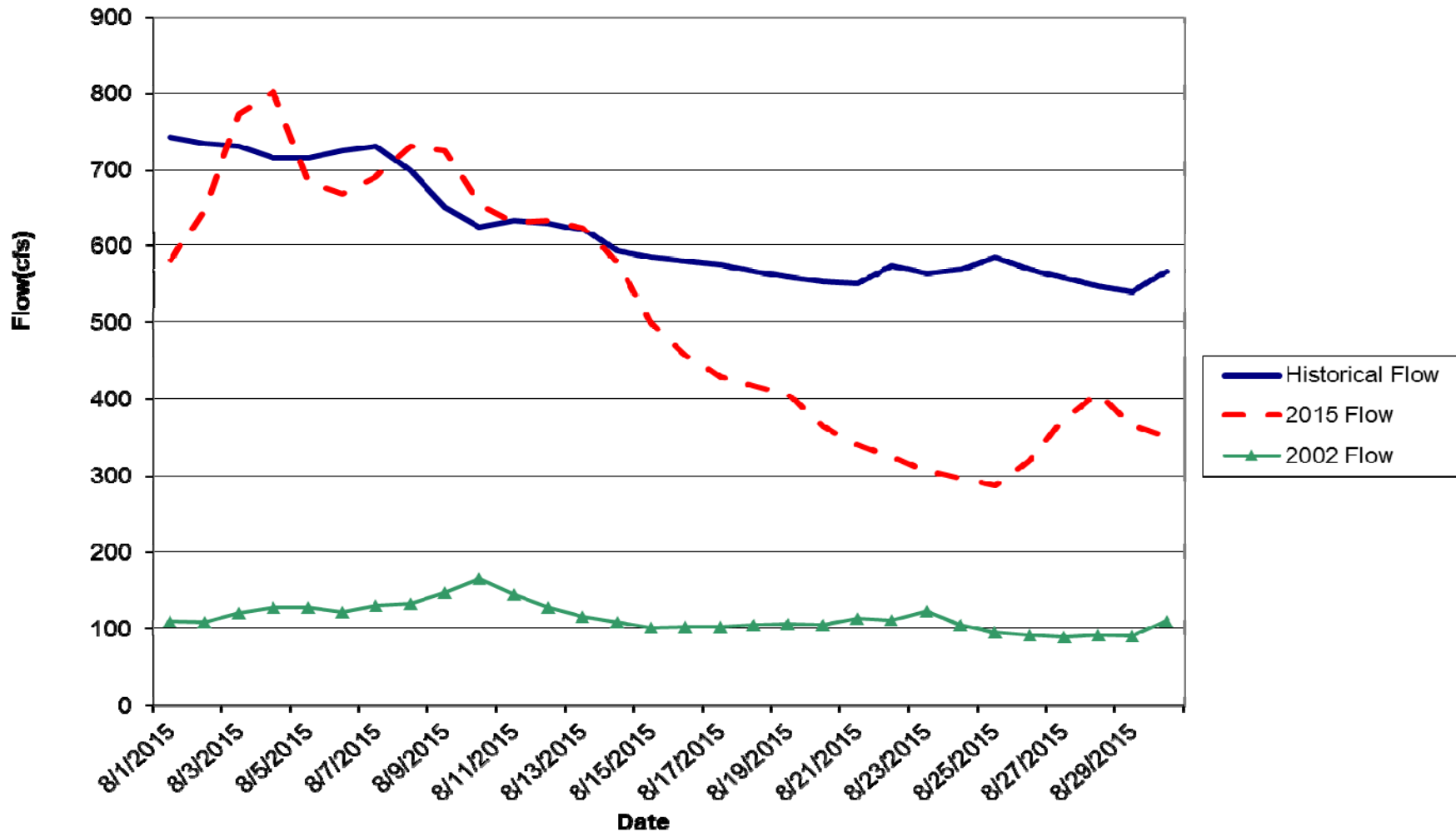
## ANIMAS RIVER BELOW DURANGO PUMPING PLANT (09362520)



Stream Flow Data for the month of August is 112% of average

# USGS STREAM FLOW DATA

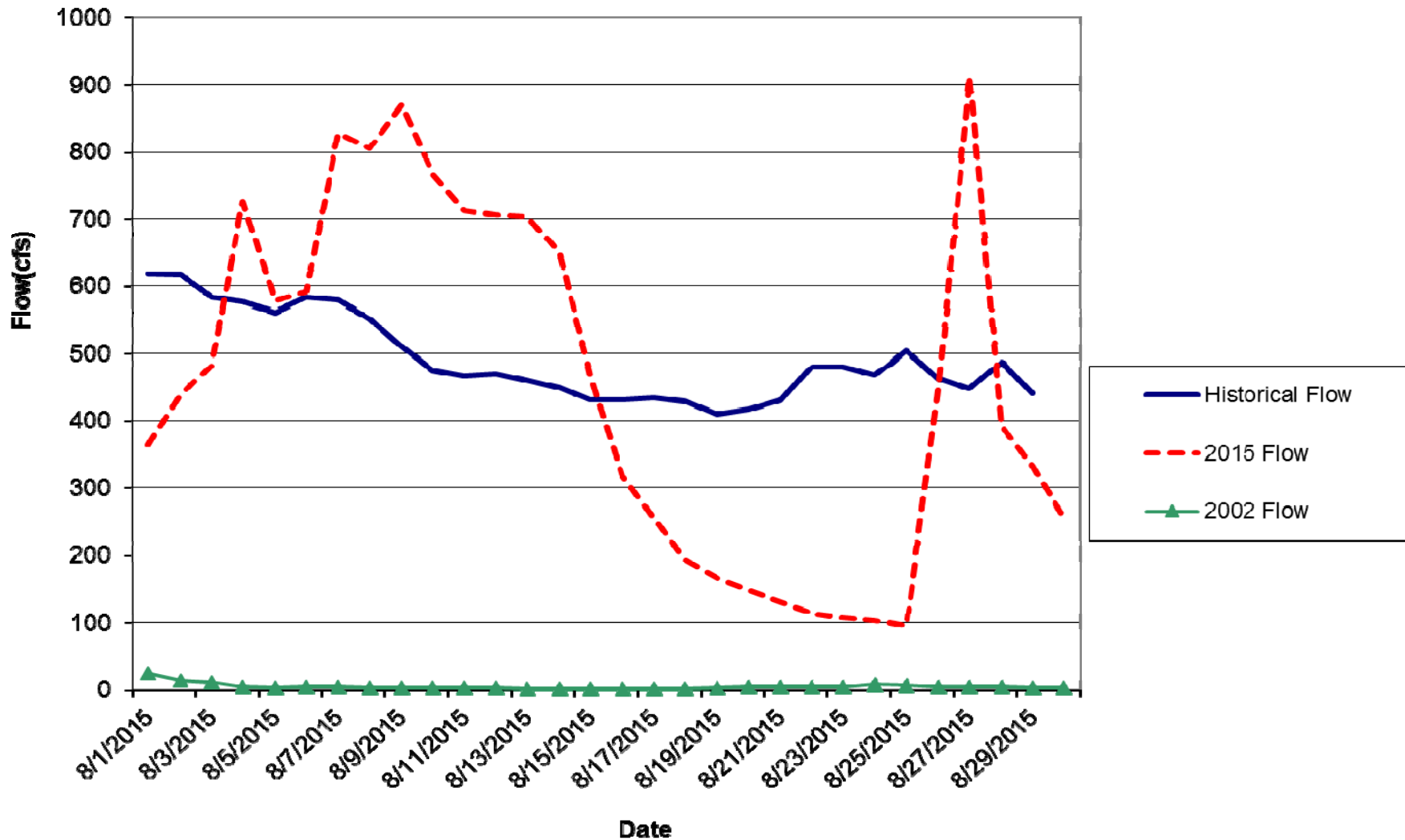
## ANIMAS RIVER NEAR CEDAR HILL (09363500)



Stream Flow Data for the month of August is 83% of average

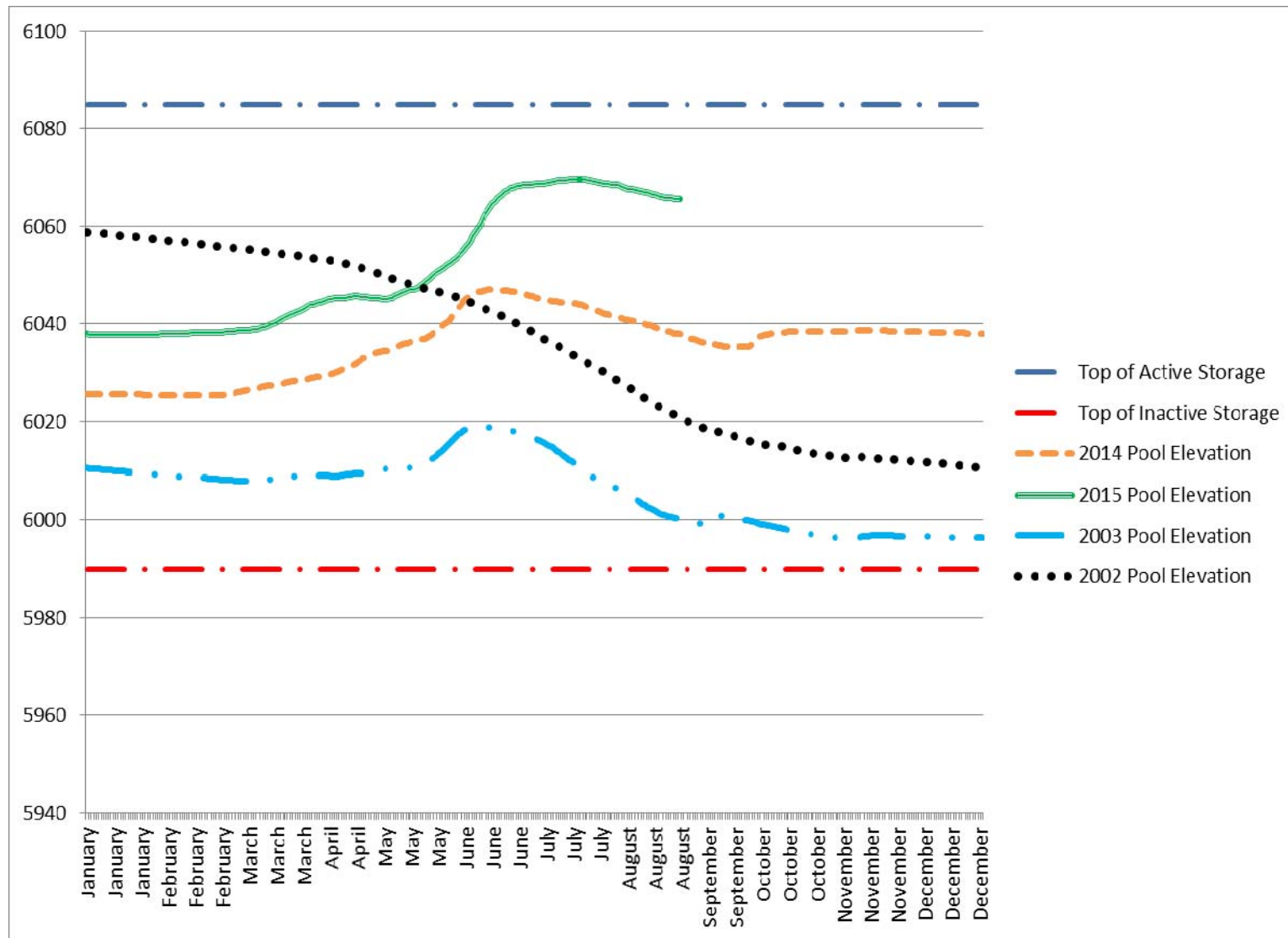
# USGS STREAM FLOW DATA

## ANIMAS RIVER AT FARMINGTON (09364500)



Stream Flow Data for the month of August is 93% of average

# NAVAJO RESERVOIR POOL ELEVATION



Navajo Reservoir's current water content as of August 30th is 84% of capacity

# A-LP PROJECT UPDATE

- The pumping plant is not currently pumping and there are no releases.
- As of August 6th, reservoir elevation is at 6881.63 with total storage of 114,525 af. Total surface area in the reservoir at this elevation is 1,487 acres.



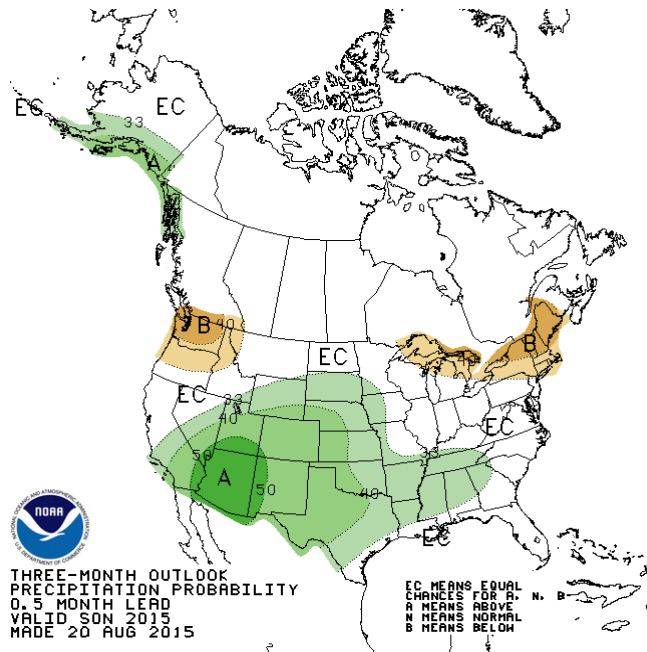
# SEA SURFACE TEMPERATURE

- El Niño conditions are present.
- Positive equatorial sea surface temperature (SST) anomalies continue across most of the Pacific Ocean.
- There is a greater than 90% chance that El Niño will continue through Northern Hemisphere winter 2015-16, and around an 85% chance it will last through early spring 2016.

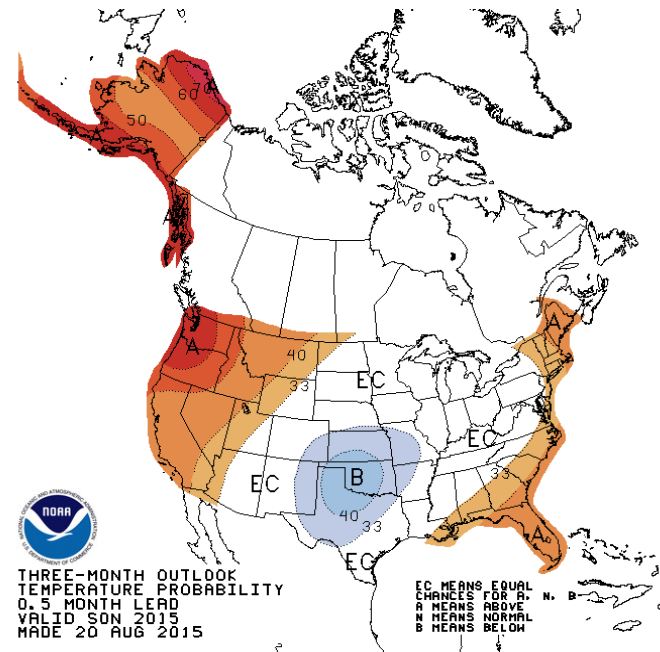


# PRECIPITATION AND TEMPERATURE OUTLOOK

## Precipitation Sep-Oct-Nov 2015



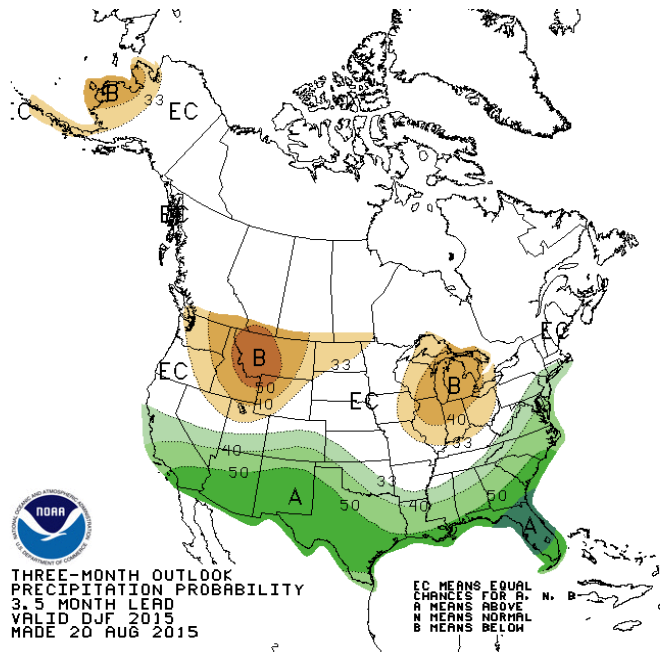
## Temperature Sep-Oct-Nov 2015



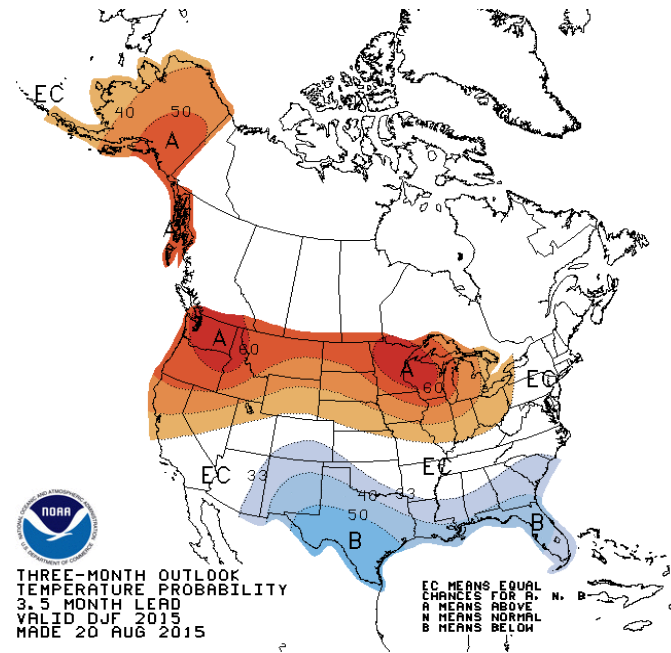
Precip	Temp	Probability anomaly as shown on map	Probability of occurrence for each Equal			Most likely category
			A	N	B	
Green	Red	40%-50%	73.3%-83.3%	23.3%-13.3%	3.3%	"Above"
		30%-40%	63.3%-73.3%	33.3%-23.3%	3.3%	"Above"
		20%-30%	53.3%-63.3%	33.3%	13.3%-3.3%	"Above"
		10%-20%	43.3%-53.3%	33.3%	23.3%-13.3%	"Above"
		5%-10%	38.3%-43.3%	33.3%	23.3%-28.3%	"Above"
0%-5%	0%-5%	33.3%-38.3%	33.3%	33.3%-28.3%	"Above"	
Grey	Grey	0%-5%	30.8%-33.3%	33.3%-38.3%	30.8%-33.3%	"Near Normal"
		5%-10%	28.3%-30.8%	38.3%-43.3%	28.3%-30.8%	"Near Normal"
Orange	Light Blue	0%-5%	33.3%-28.3%	33.3%	33.3%-38.3%	"Below"
		5%-10%	28.3%-23.3%	33.3%	38.3%-43.3%	"Below"
		10%-20%	23.3%-13.3%	33.3%	43.3%-53.3%	"Below"
		20%-30%	13.3%-3.3%	33.3%	53.3%-63.3%	"Below"
		30%-40%	3.3%	33.3%-23.3%	63.3%-73.3%	"Below"
40%-50%	3.3%	23.3%-13.3%	73.3%-83.3%	"Below"		
White	White	0%	33.3%	33.3%	33.3%	"Equal Chances"

# PRECIPITATION AND TEMPERATURE OUTLOOK

## Precipitation Dec-Jan-Feb 15/16



## Temperature Dec-Jan-Feb 15/16

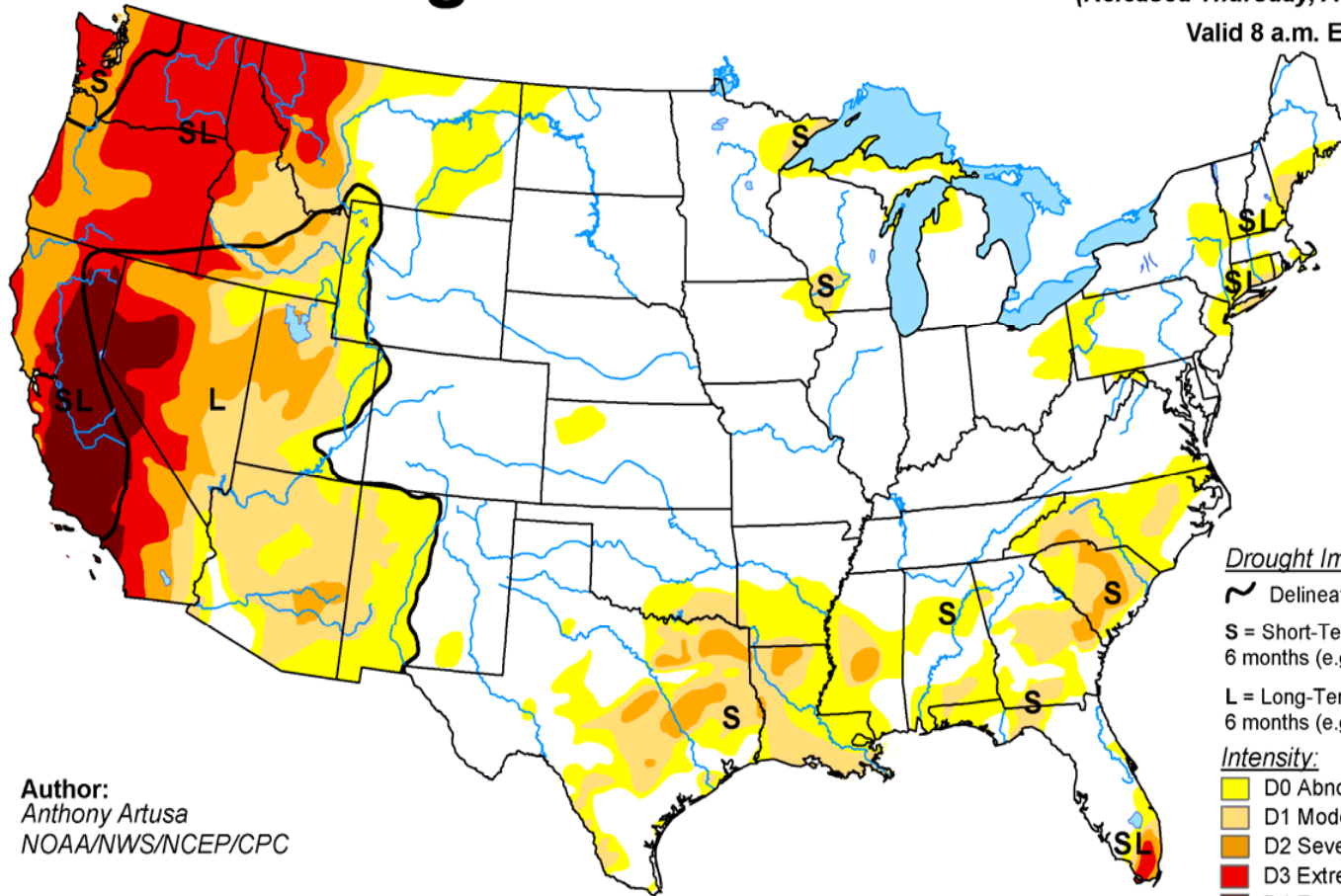


Precip	Temp	Probability anomaly as shown on map	Probability of occurrence for each Equal			Most likely category
			A	N	B	
Green shades	Red shades	40%-50%	73.3%-83.3%	23.3%-13.3%	3.3%	"Above"
		30%-40%	63.3%-73.3%	33.3%-23.3%	3.3%	"Above"
		20%-30%	53.3%-63.3%	33.3%	13.3%-3.3%	"Above"
		10%-20%	43.3%-53.3%	33.3%	23.3%-13.3%	"Above"
		5%-10%	38.3%-43.3%	33.3%	23.3%-28.3%	"Above"
		0%-5%	33.3%-38.3%	33.3%	33.3%-28.3%	"Above"
Grey	Grey	0%-5%	30.8%-33.3%	33.3%-38.3%	30.8%-33.3%	"Near Normal"
		5%-10%	28.3%-30.8%	38.3%-43.3%	28.3%-30.8%	"Near Normal"
Orange/Brown shades	Blue shades	0%-5%	33.3%-28.3%	33.3%	33.3%-38.3%	"Below"
		5%-10%	28.3%-23.3%	33.3%	38.3%-43.3%	"Below"
		10%-20%	23.3%-13.3%	33.3%	43.3%-53.3%	"Below"
		20%-30%	13.3%-3.3%	33.3%	53.3%-63.3%	"Below"
		30%-40%	3.3%	33.3%-23.3%	63.3%-73.3%	"Below"
		40%-50%	3.3%	23.3%-13.3%	73.3%-83.3%	"Below"
White	White	0%	33.3%	33.3%	33.3%	"Equal Chances"

# U.S. Drought Monitor

August 25, 2015  
(Released Thursday, Aug. 27, 2015)

Valid 8 a.m. EDT



Author:  
Anthony Artusa  
NOAA/NWS/NCEP/CPC

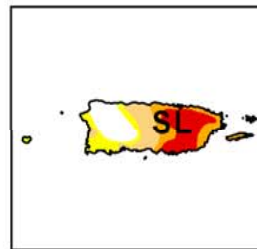
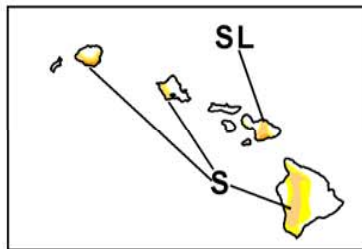
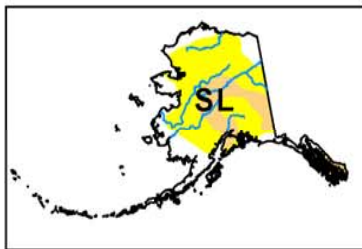
Drought Impact Types:

- ~ Delineates dominant impacts
- S = Short-Term, typically less than 6 months (e.g. agriculture, grasslands)
- L = Long-Term, typically greater than 6 months (e.g. hydrology, ecology)

Intensity:

- Yellow: D0 Abnormally Dry
- Light Orange: D1 Moderate Drought
- Dark Orange: D2 Severe Drought
- Red: D3 Extreme Drought
- Dark Red: D4 Exceptional Drought

The Drought Monitor focuses on broad-scale conditions. Local conditions may vary. See accompanying text summary for forecast statements.



<http://droughtmonitor.unl.edu/>